

NV Energy CCS Public Lands Restoration Project

Sagebrush Ecosystem Council Meeting
June 3, 2025

Presented by
Casey Adkins, SETT
Mathew Johns, NVE



NEVADA
**SAGEBRUSH ECOSYSTEM
PROGRAM**



Nevada Department of
**CONSERVATION &
NATURAL RESOURCES**



Nevada
Department
of Agriculture

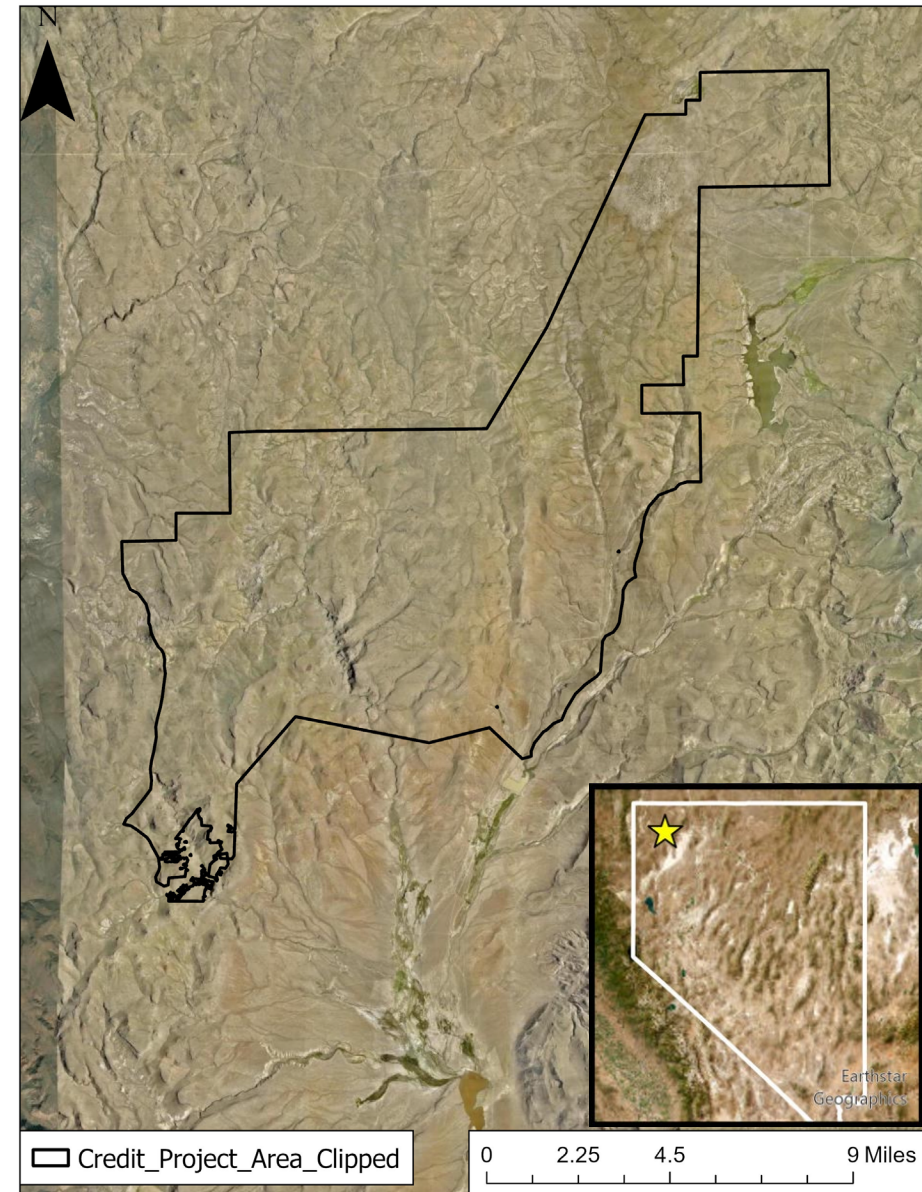


Estimated CCS Debit Obligation

- NV Energy has approx. 10,839 term debits for the Greenlink North Transmission Project
 - Approx. 4,500 credits via Private Credit Projects
 - 6,339 credits via Public Lands Restoration Project
- The project presented today will fulfill the remaining obligation and the reserve account contribution required

Summit Lake Project

- NDOW & BLM Project Area
 1. Reduce annual invasive grass cover
 2. Restore wildlife habitat with perennial plant communities. Treatments will be prioritized in sagebrush growth to promote landscape health, and resistance and resilience to wildfires
- NEPA Determination of NEPA Adequacy (DNA) approved in 2023



Summit Lake Project

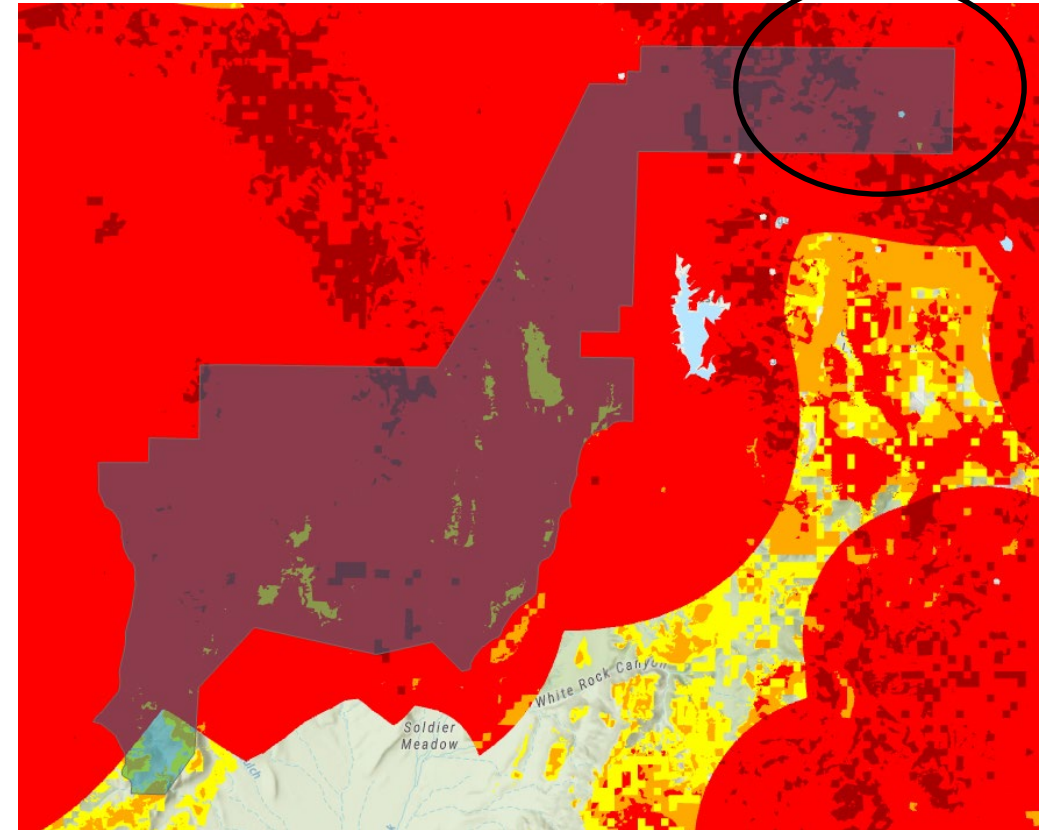
- Will allow the Sagebrush Ecosystem Program to work towards one of its central goals: providing a net conservation gain for *GRSG*
- Provides a unique opportunity to actively work towards achieving the Sagebrush Ecosystem Council's mission of maintaining and restoring a functional and resilient sagebrush ecosystem



Summit Lake Project Area

- Approximately 44,240 acres
- Majority within PHMA
- 5 leks within the Project Area and 9 more leks with 6km of the Project boundary (including historical leks)
- Within the CCS SAP Priority Areas

Previously treated by NDOW



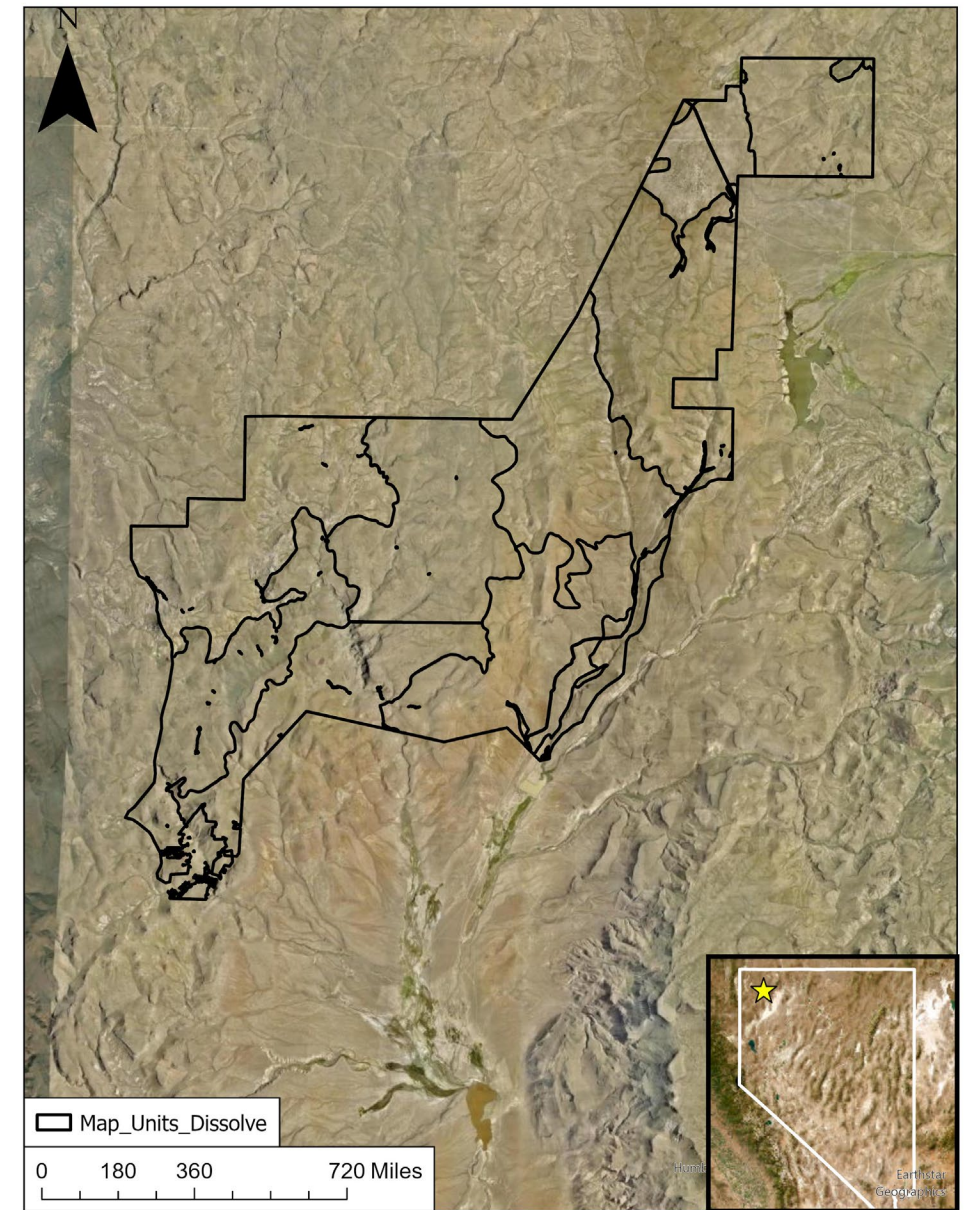
NDOW Partnership

- NDOW will assist in the treatments and the coordination of hiring contractors for the first two years (Tier 1) of the project
 - The remaining years will be fully supported by SETT and the Proponent
- This is an opportunity for SETT to gain experience in developing and implementing Public Lands projects

Project Map

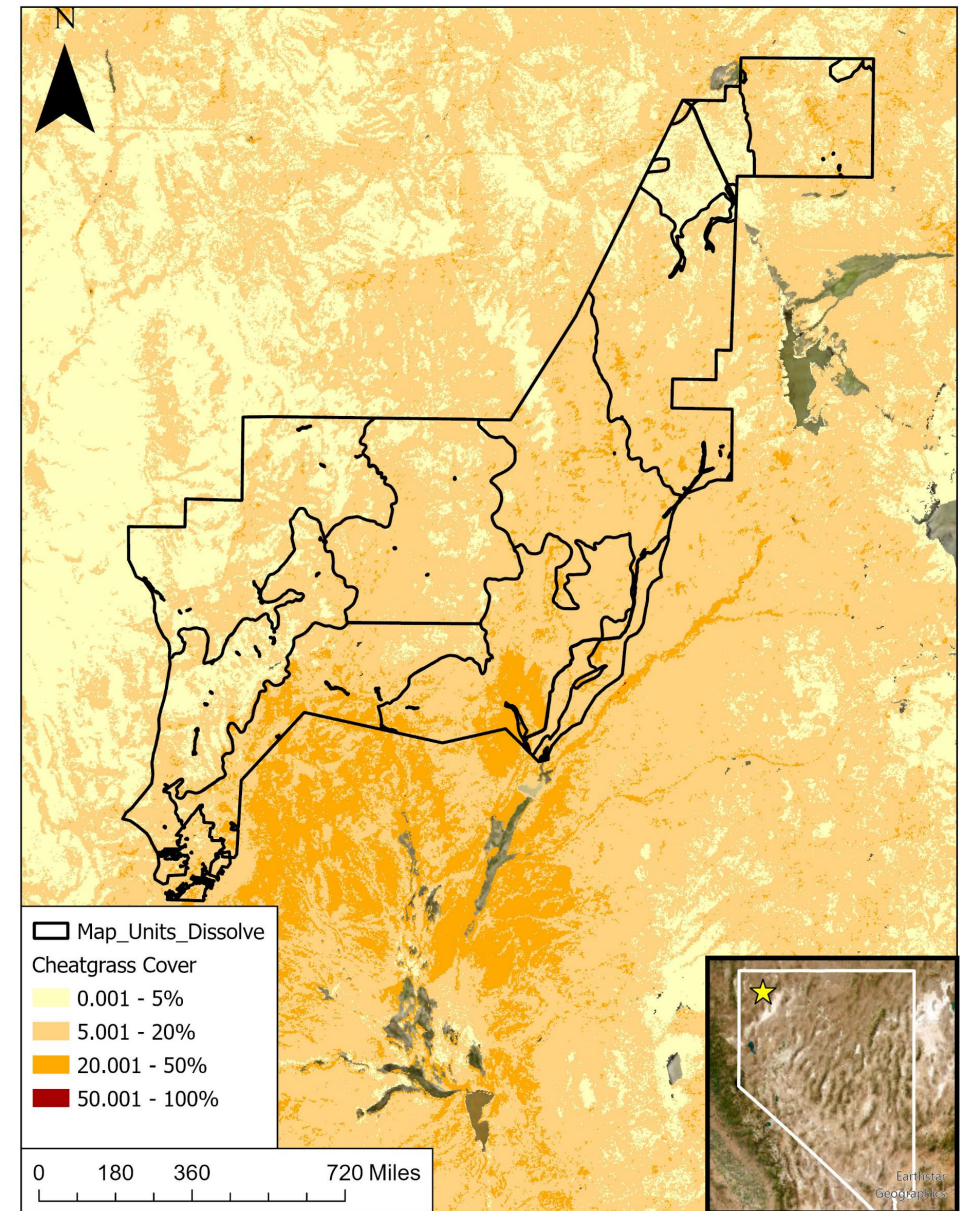
Units/Treatment Areas

- Project Area was divided into treatment areas of approx. 5,000 acres based on Ecological Site Descriptions and Disturbance Response Groups
 - Most likely to have similar treatment needs
 - Most likely to have a similar response to treatments
 - Most feasible acreage for treatments



Project Map Units/Treatment Areas

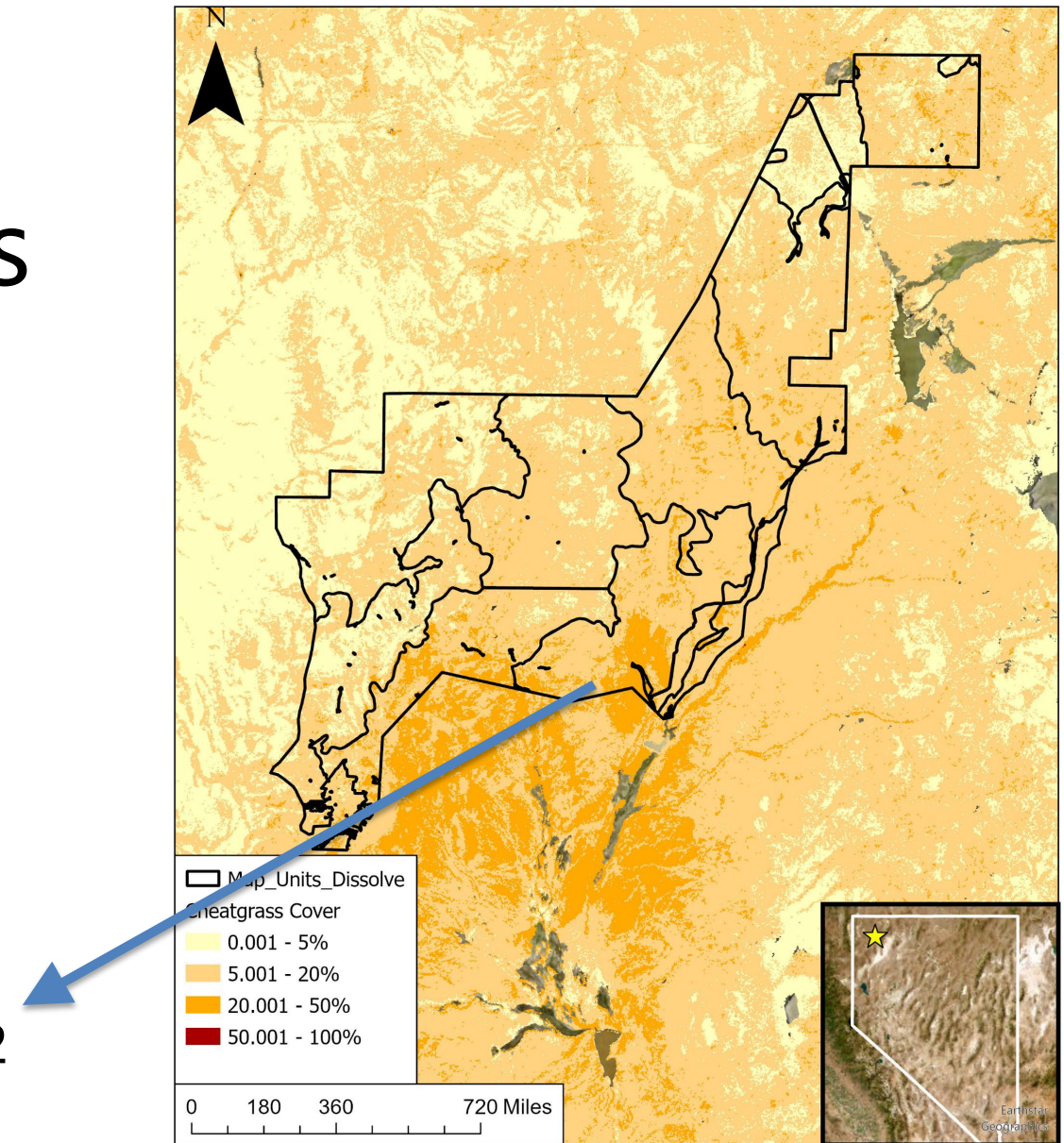
- Map Units have been numbered in order of treatment priority to increase the likelihood of success with more opportunities for retreatments and long-term monitoring



Project Map Units/Treatment Areas

- Map Units have been numbered in order of treatment priority to increase the likelihood of success with more opportunities for retreatments and long-term monitoring
- Treatments will occur by Map Unit following their sequential ranking

2006 Soldier Fire totaling approximately 962 acres, 665 acres within the Project Area



Project Map

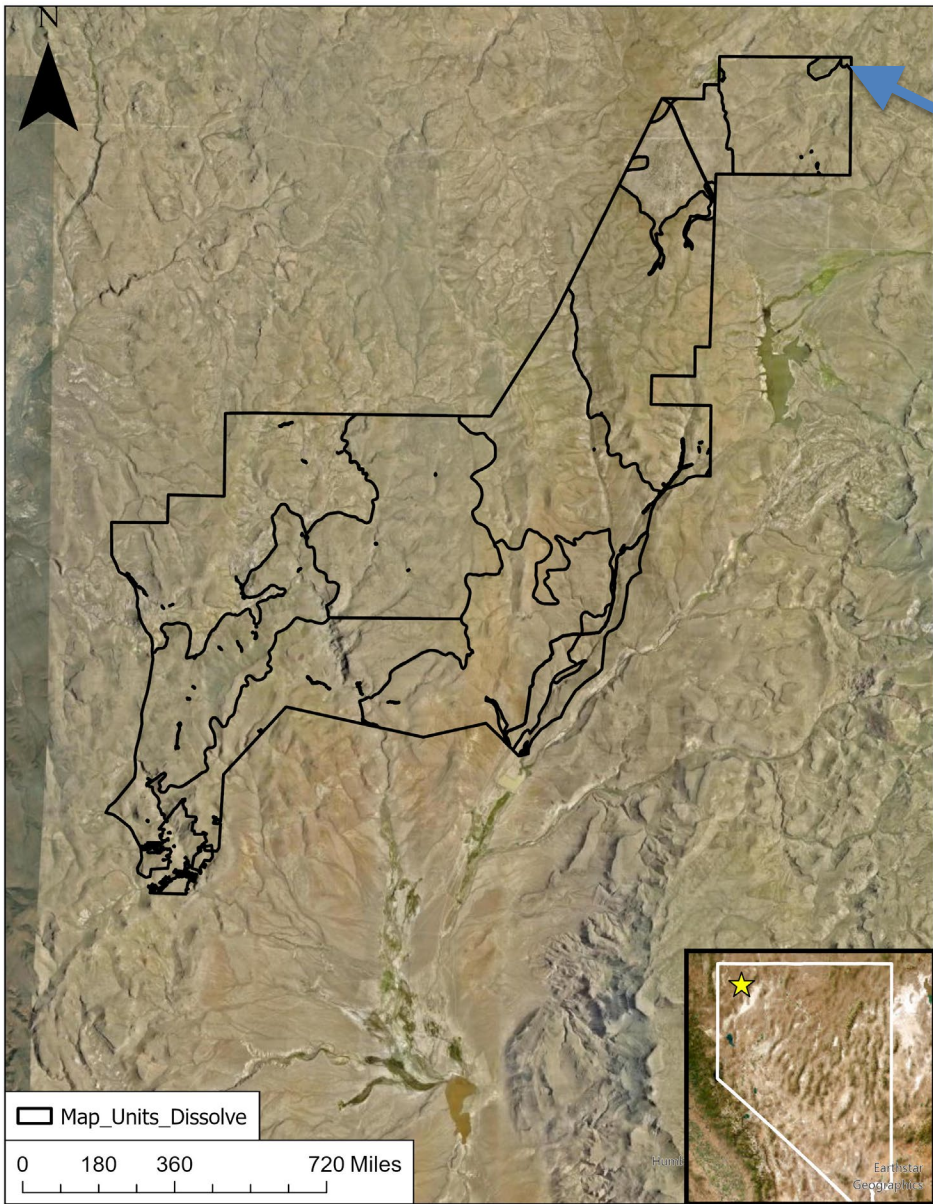
Units/Treatment Areas

- Slight changes may occur to Map Unit boundaries due to;
 - Upcoming site visit, June 12 -13
 - Collaborating with the grazing permittee and their grazing cycle
 - Collaborating with the BLM and the Summit Lake Paiute Tribe

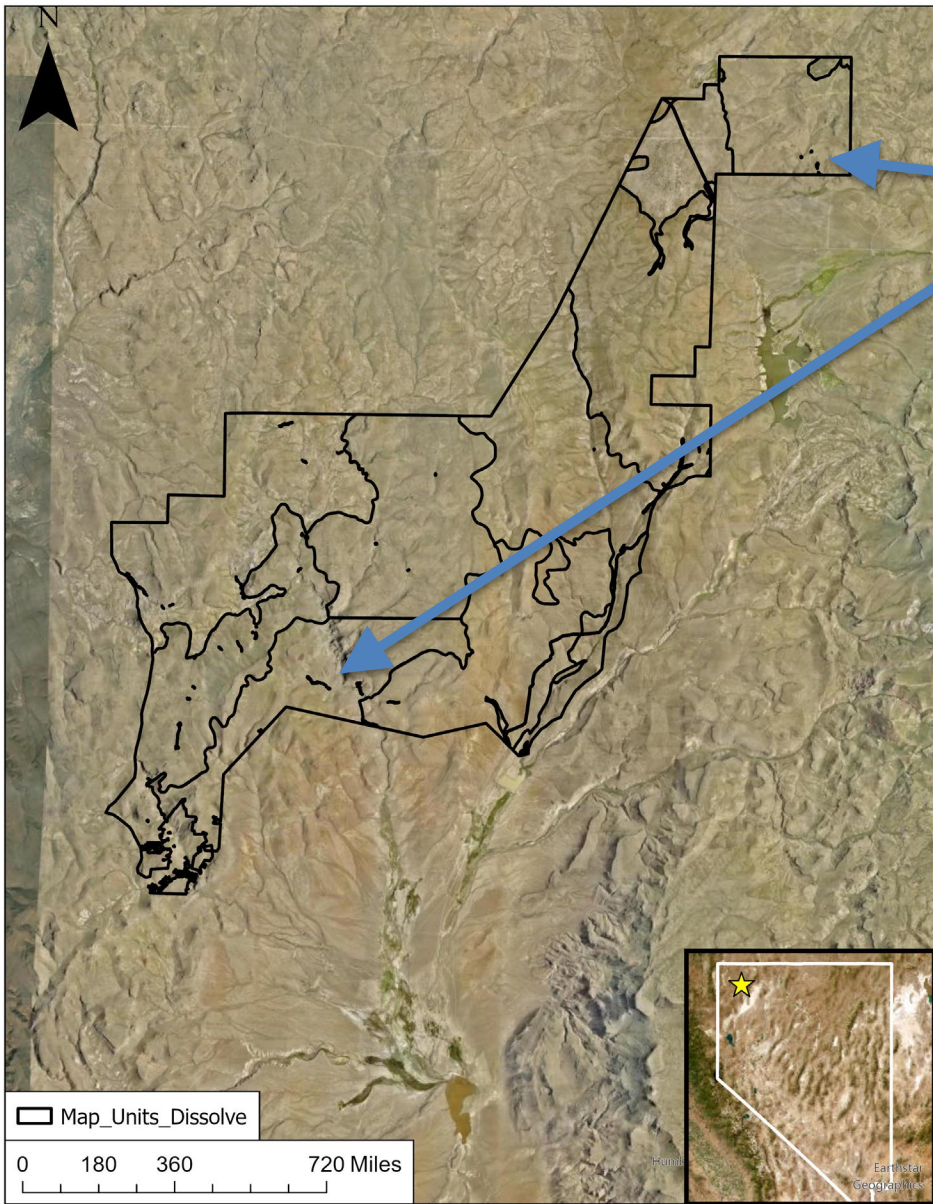


Restoration Treatments

- Project Area-wide Treatment Types
 - Noxious weed herbicide treatment
 - Applied by aircraft, tractor, truck, UTV, or backpack sprayer
 - Broadcast seeding
 - Native and some predetermined non-native perennial species
- Possible Localized Treatment types (pending treatment need and approval)
 - Pinyon-Juniper woodland removal
 - Meadow improvements



Phase I Pinyon-Juniper removal



Meadow Enhancements

Credit Release Tier	Year (Project Term Length)	Weed Spraying	Seeding	Fencing	PJ Removal	Retreatment and/or Monitoring	Annual Monitoring	5-yr Monitoring	Credits Release	Total Credit Obligation	Treatment Weight	Post-Treatment Credit Balance
Tier 1	1	MU 1							486	6339	1.15	3423
	2	MU 2	MU 1									
Tier 2	3	MU 3	MU 2			MU 1			486			
	4	MU 4	MU 3			MU 2	MU 1					
Tier 3	5	MU 5	MU 4			MU 3	MU 2	MU 1	486			
	6	MU 6	MU 5		MU 5	MU 4	MU 3	MU 2				
Tier 4	7	MU 7	MU 6			MU 5	MU 4	MU 3	486			
	8	MU 8	MU 7			MU 6	MU 5	MU 4				
Tier 5	9		MU 8			MU 7	MU 6	MU 5	486			
	10					MU 8	MU 7	MU 1; 6				
Tier 6	11						MU 8	MU 2; 7	486			
	12							MU 3; 8				
Tier 7	13							MU 4	381			
	14							MU 5				
Tier 8	15							MU 1; 6	381			
	16							MU 2; 7				
Tier 9	17							MU 3; 8	381			
	18							MU 4				
Tier 10	19							MU 5	380			
	20							MU 1; 6				
Tier 11	21							MU 2; 7	380			
	22							MU 3; 8				
Tier 12	23							MU 4	380			
	24							MU 5				
Tier 13	25							MU 1; 6	380			
	26							MU 2; 7				
Tier 14	27							MU 3; 8	380			
	28							MU 4				
Tier 15	29							MU 5	380			
	30							MU 1; 6				
SUM									6339			

Monitoring Procedures

- SETT will provide approx. 12 sampling locations per Map Unit for monitoring
- At each sampling location the following would occur;
 - Landscape photo in a specified cardinal direction
 - Nearest sagebrush height within 50ft
 - Daubenmire plot photo
 - Qualitative score card
 - Are there noxious or invasive weeds? None, Sparse, Common, or Dominant
 - If fencing is installed, is it in proper condition? Yes or No
- Compiled for Monitoring Report and submitted to SETT



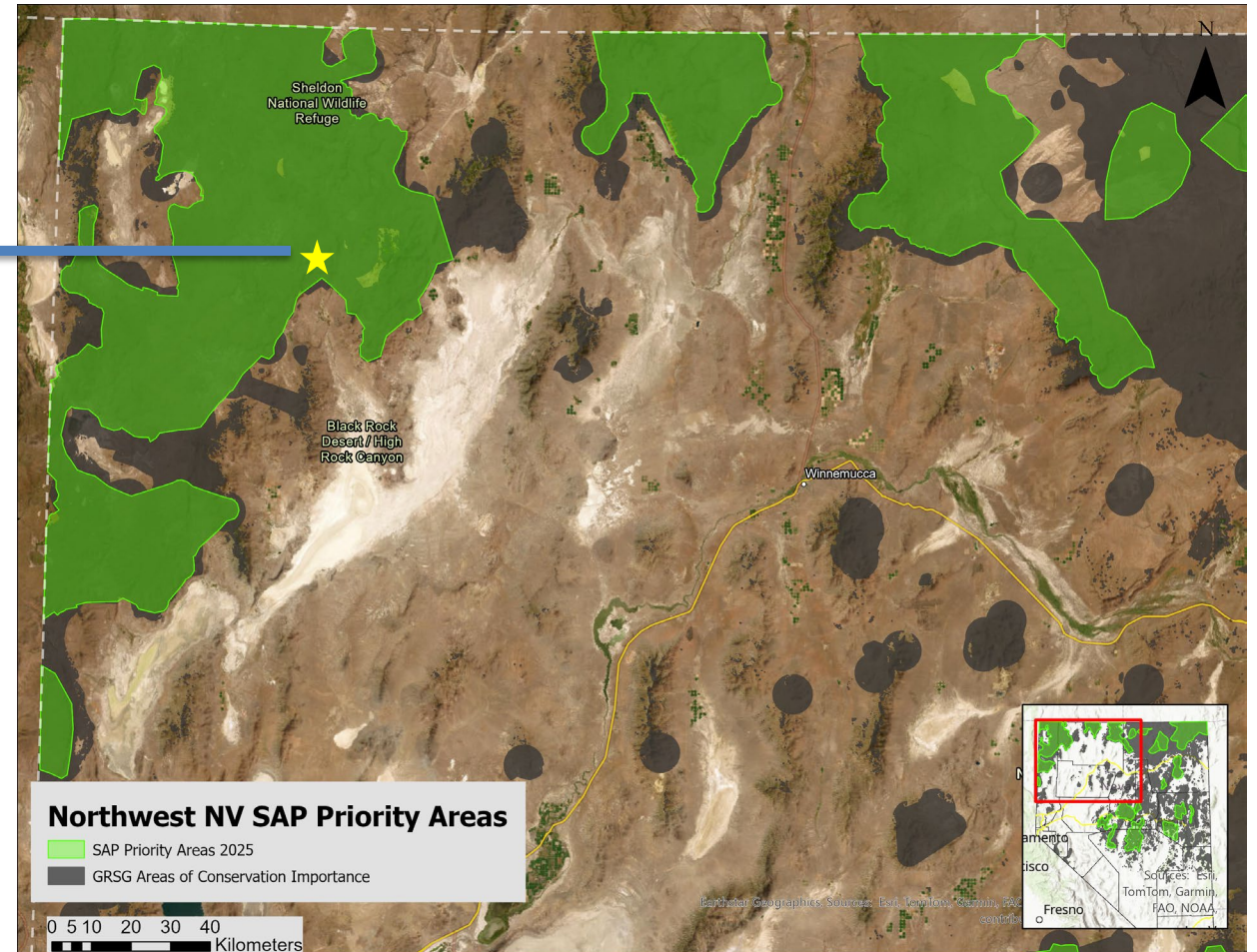
Compliance and Credit Release

1. Restoration requirements are complete as mandated in the Mitigation Plan
2. Monitoring reports are completed accurately and on time
3. The project conditions are not declining—improving or stable (force majeure exempt)
4. Financial Assurance requirements are met

Credit and Debit Project Proximity



Credit and Debit Project Proximity



Next Steps

- If approved
 - We will be attending the site visit and evaluate the project area for resistance and resilience and its ability to control wildfire
 - We will begin sharing project details with the grazing proponent
 - Finalize treatment plans after site visit and submit for review to the BLM and Tribal Liaisons
 - Treatments could occur as early as this fall