

NDOW State Managed Lands

Mark Freese, Habitat Division Administrator



NDOW Managed Lands

- 14 Wildlife Management Area's (WMA) Statewide totaling ~166,000 Acres
 - Southern Region - 3 WMAs (Overton, Key Pittman and Kirch)
 - Eastern Region - 5 WMAs (Steptoe Valley, Franklin Lake, Bruneau River, Argenta, and Pole Canyon Cooperative)
 - Western Region - 7 WMAs (Humboldt, Carson Lake, Fernley, Mason Valley, Alkali Lake and Scripps)
- ~14 Staff, 5 Seasonal Employees
- ~35,000 acres NDOW managed that are non-WMA
- Purpose – Wildlife and Recreation
 - Many of the WMA's primary emphasis is for wetland protection/management & hunting
 - While habitat management and recreation are a priority, bird watching, nature trails, educational, scientific and other uses are encouraged where consistent with purchase intent
- Management Regulations from NRS, NAC, and Commission Policy



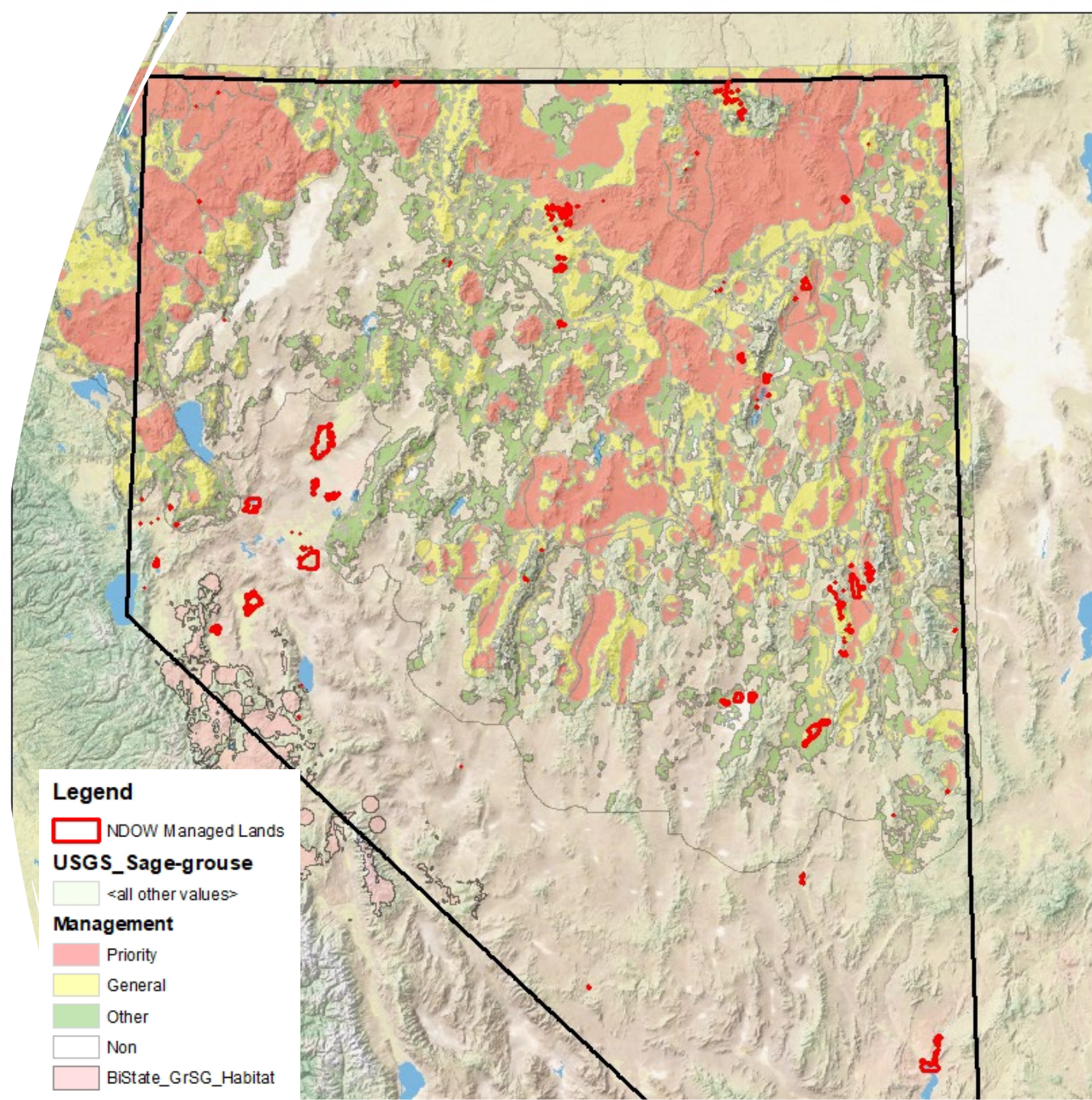
Management

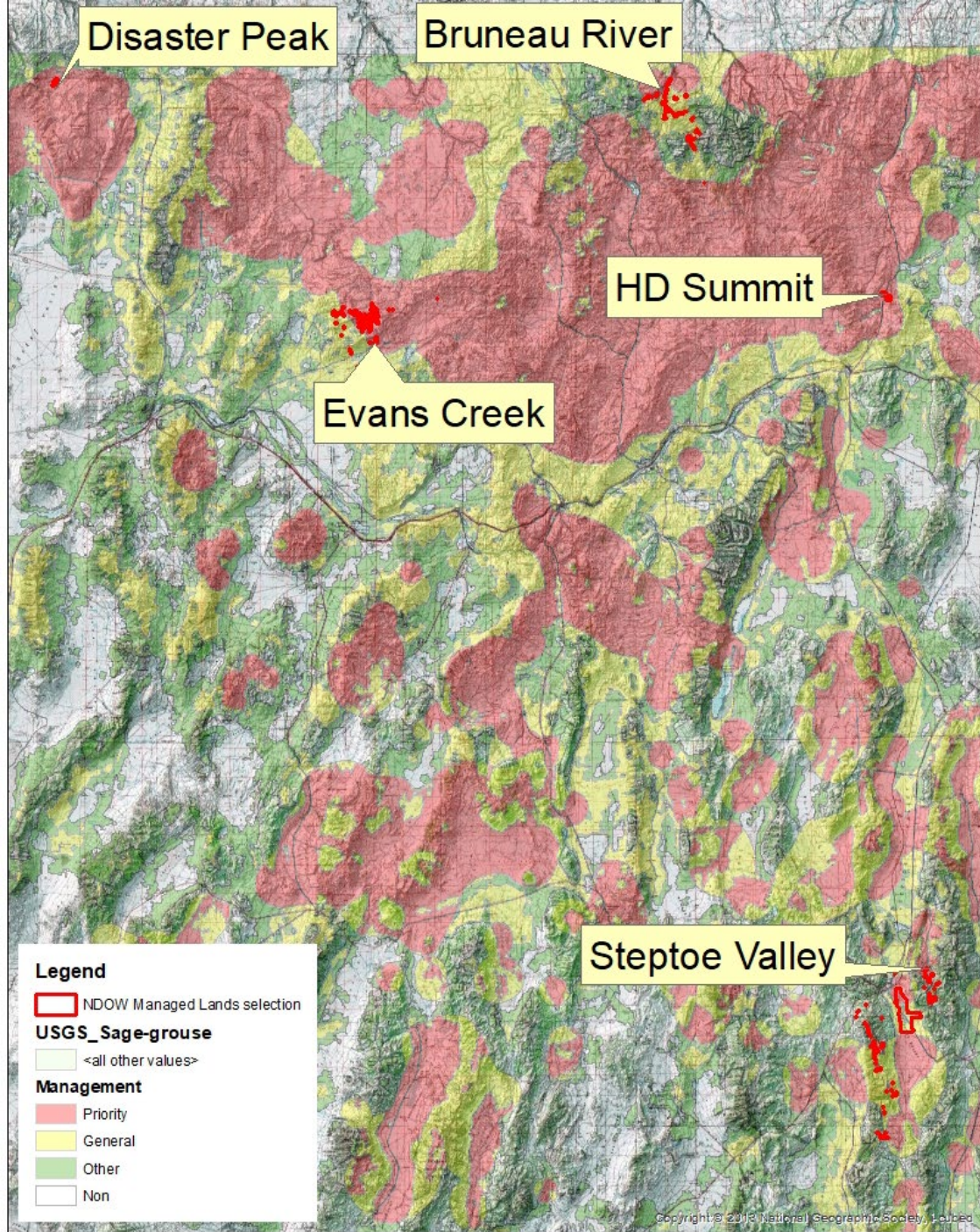


- Water Management
- Seeding/seedling planting/Farming (e.g. food plots)
- Weed Treatments
- Other Vegetation Management (BDA, PJ removal)
- Fencing
- Predator Control
- Grazing
- Recreation Management (fishing, hunting, bird watching)

NDOW managed lands within Sage- grouse Habitats

~74,000 acres





NDOW Sage-grouse projects on state managed lands

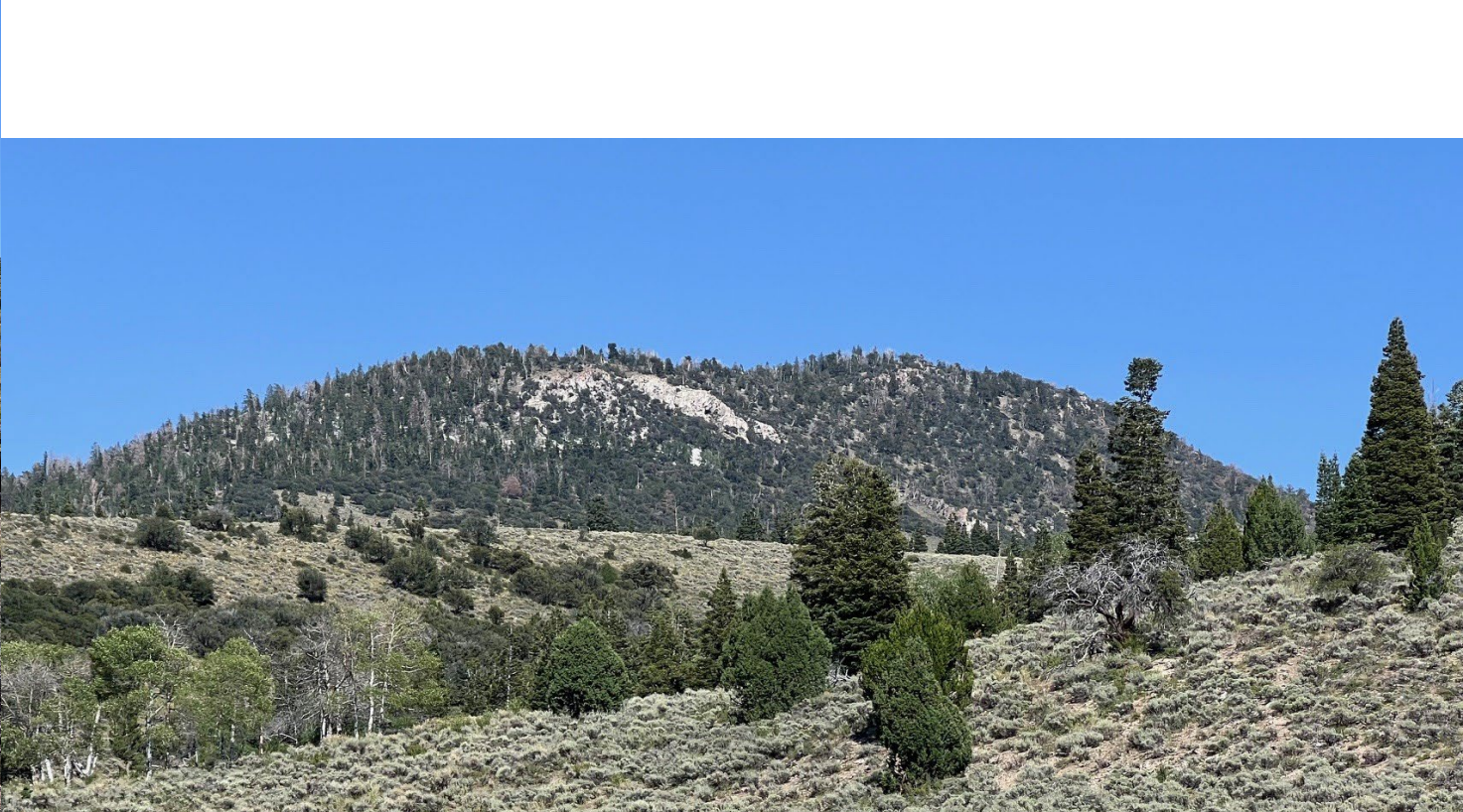
- Steptoe Valley
- HD Summit
- Bruneau River
- Evans Creek
- Disaster Peak

Steptoe Valley WMA - Mountain Unit

- PJ Removal
- Grazing license issued to 3 permittees
- Unnamed Spring Protection
 - Brood habitat located in PHMA
 - Within 3 miles of the Gilford Meadow and Canyon Spring NE leks
 - Removal of old barbed wire fence (1,920 feet) and material
 - Riparian protection fencing

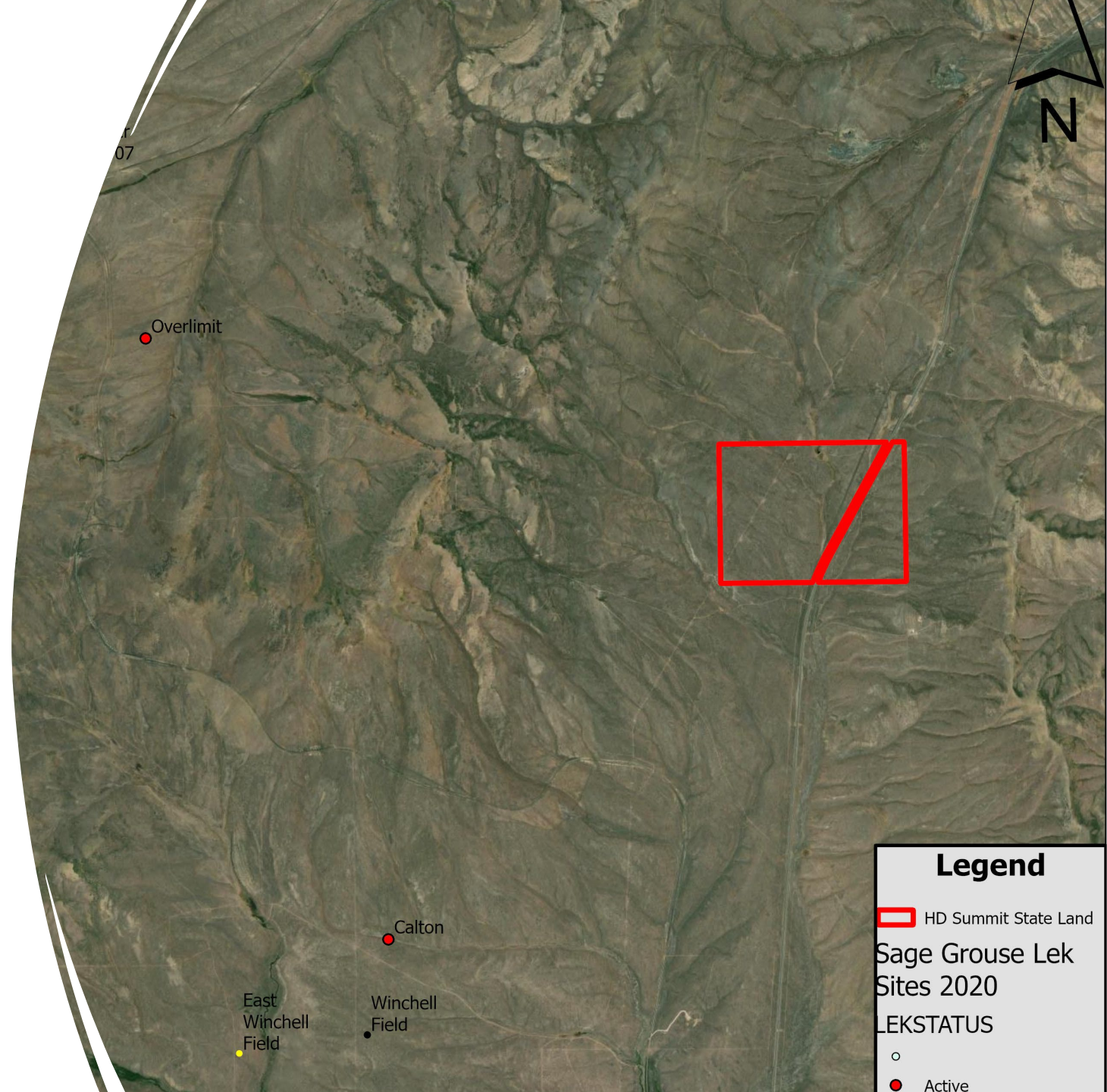






HD Summit Exclosure

- Several active leks within a 4-mile buffer of the exclosure and is PHMA
- Approximately 1,000-Acres of intact upland and riparian habitat
- Exclosure coordinated with permittees and constructed to manage grazing and to provide improved wildlife habitat
- Prescriptively grazed



Bruneau River WMA

- Taylor Creek Riparian Exclosure
 - Two active leks Within 0.5-miles of exclosure, in GHMA but near PHMA
 - 900-Acre Fence
 - Exclosure coordinated with permittee and constructed to in 2022 to better manage grazing and to provide improved habitat values for wildlife
 - Provides healthy riparian and upland habitat for year around sage grouse use
 - Prescriptive cattle use



BRWMA Meadow Irrigation and Grazing

- Irrigation
 - Historic Howard and Stowell Ranch Meadows
 - Largely creeping wild rye and Garrison creeping meadow foxtail
 - Provides an artificial wet meadow habitat type for sage grouse (seasonally)
 - Grazing
 - The BRWMA is the base property for two BLM grazing allotments
 - NDOW staff work closely with the permittee to work towards ecological goals for wildlife
 - Meadows are used for prescriptive grazing to reduce use on the associated federal grazing allotments
-



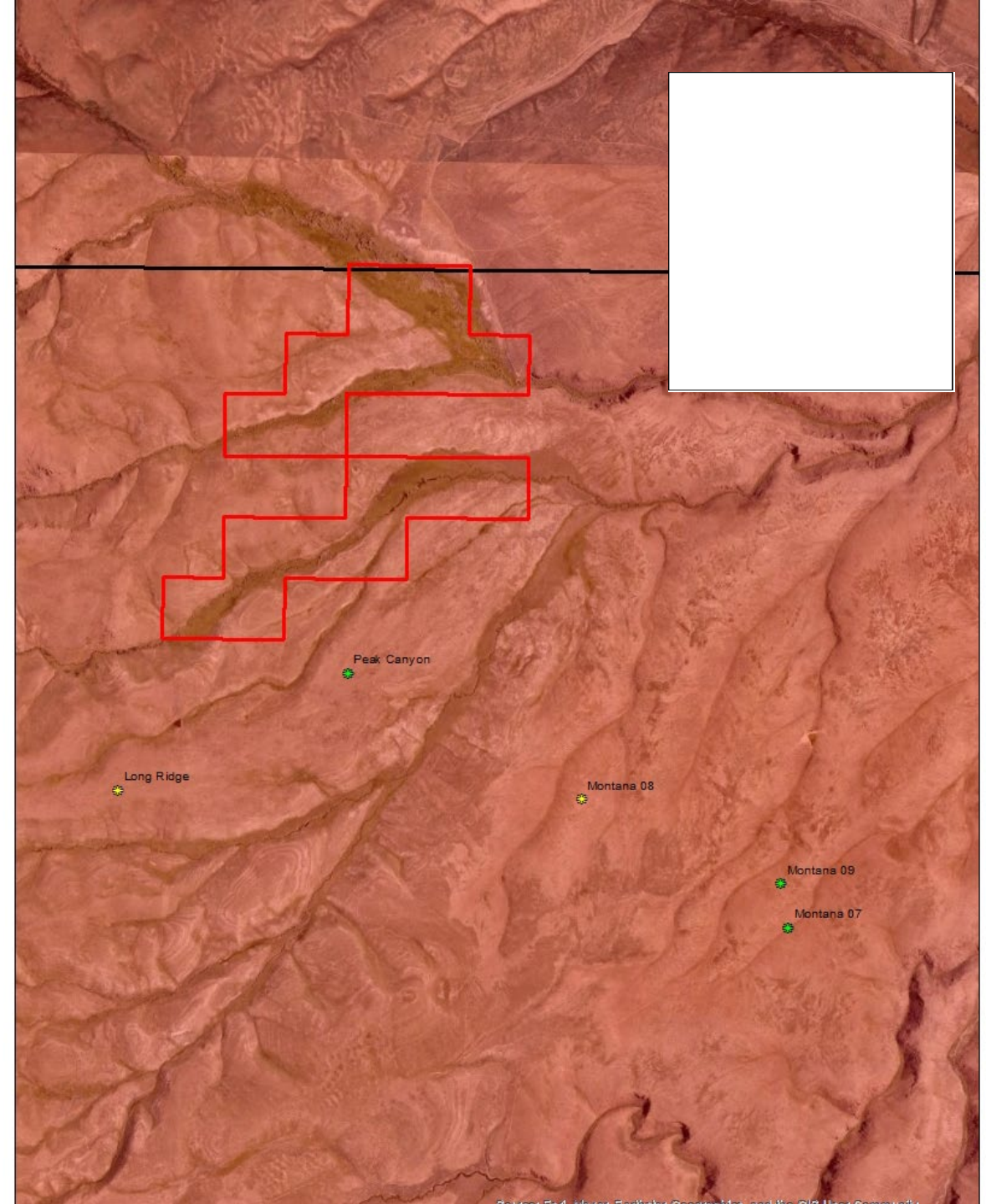
Evans Creek Riparian Exclosure

- Active lek 1.5 miles away and in PHMA
- Approximately 250-acres of upland, riparian, and wet meadow habitat
- Exclosure constructed to in 2018 to improve grazing management and wildlife habitat



Disaster Peak

- 5 leks within 2.1 miles, in PHMA
- Managed primarily for LCT



Other Programs benefitting sagebrush ecosystems and sage-grouse - accomplishments

- Restoration and Rehabilitation
 - Fire Rehab - 644,543 acres at \$14 million
 - PJ Removal - 54,989 acres pinion juniper removal at \$5.3 million
 - Spring/Meadow - 1,905 acres (170,591 linear ft fence) at \$2.3 million
 - Technical Review
 - Private Lands
 - Upland Game Management
-



Questions?

