



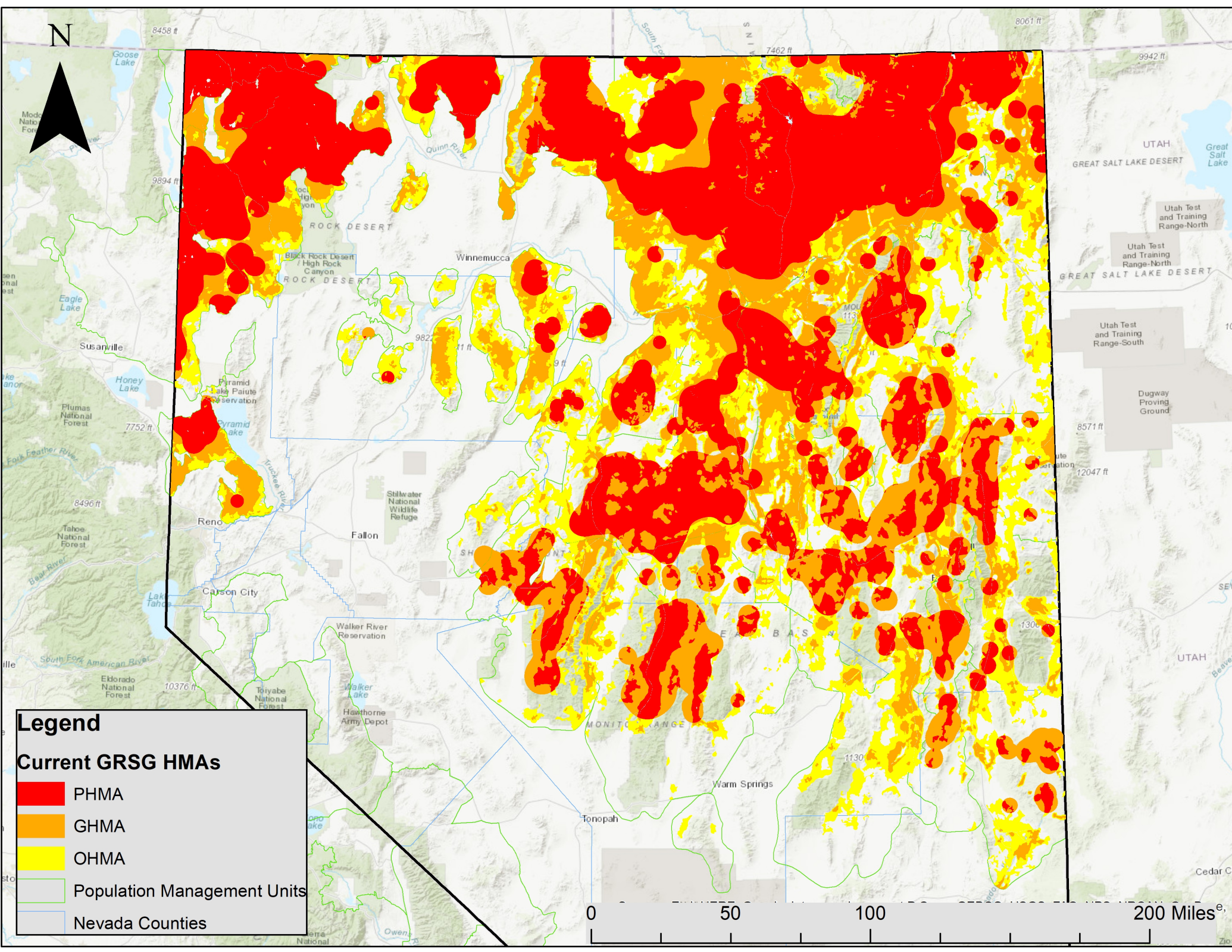
The Following maps are available on a CCS Projects interactive map viewer on the Sagebrush Ecosystem Program website at:

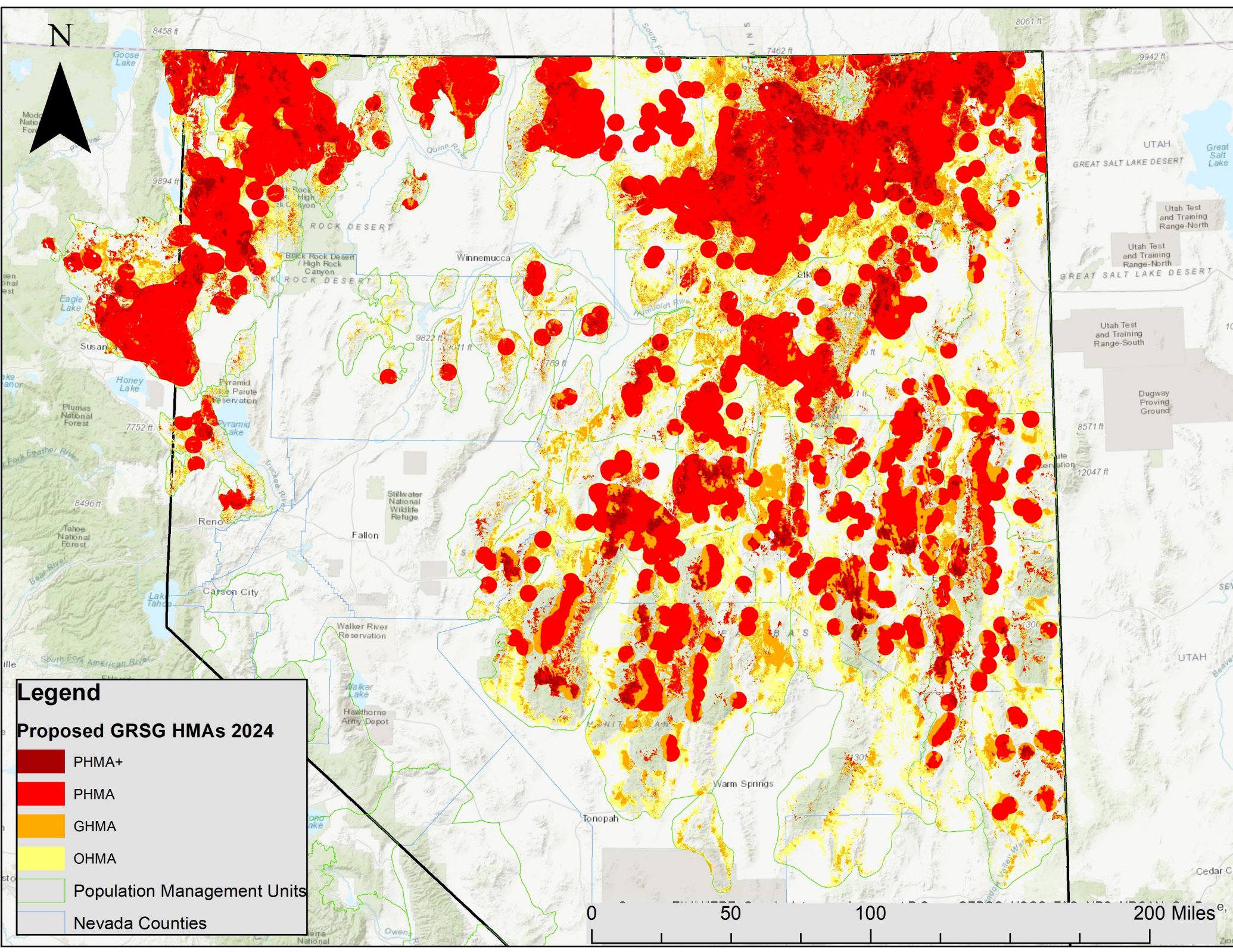
https://sagebrusheco.nv.gov/CCS/CCS_Tools/

Warning, it is a large file and may run slowly or periodically crash on a slow internet connection or low memory computer.

USGS Disclaimer: These data are preliminary and are subject to revision. They have not been subjected to accuracy assessment and are being provided early to meet the need for timely science.

These data are released on condition that the U.S. Geological Survey, or United States Government may not be held liable for any damages resulting from authorized or unauthorized use. The authors of these data require that users direct any questions pertaining to appropriate use or assistance with understanding limitations and interpretation of the data to the individuals/organization listed in the Point of Contact section.

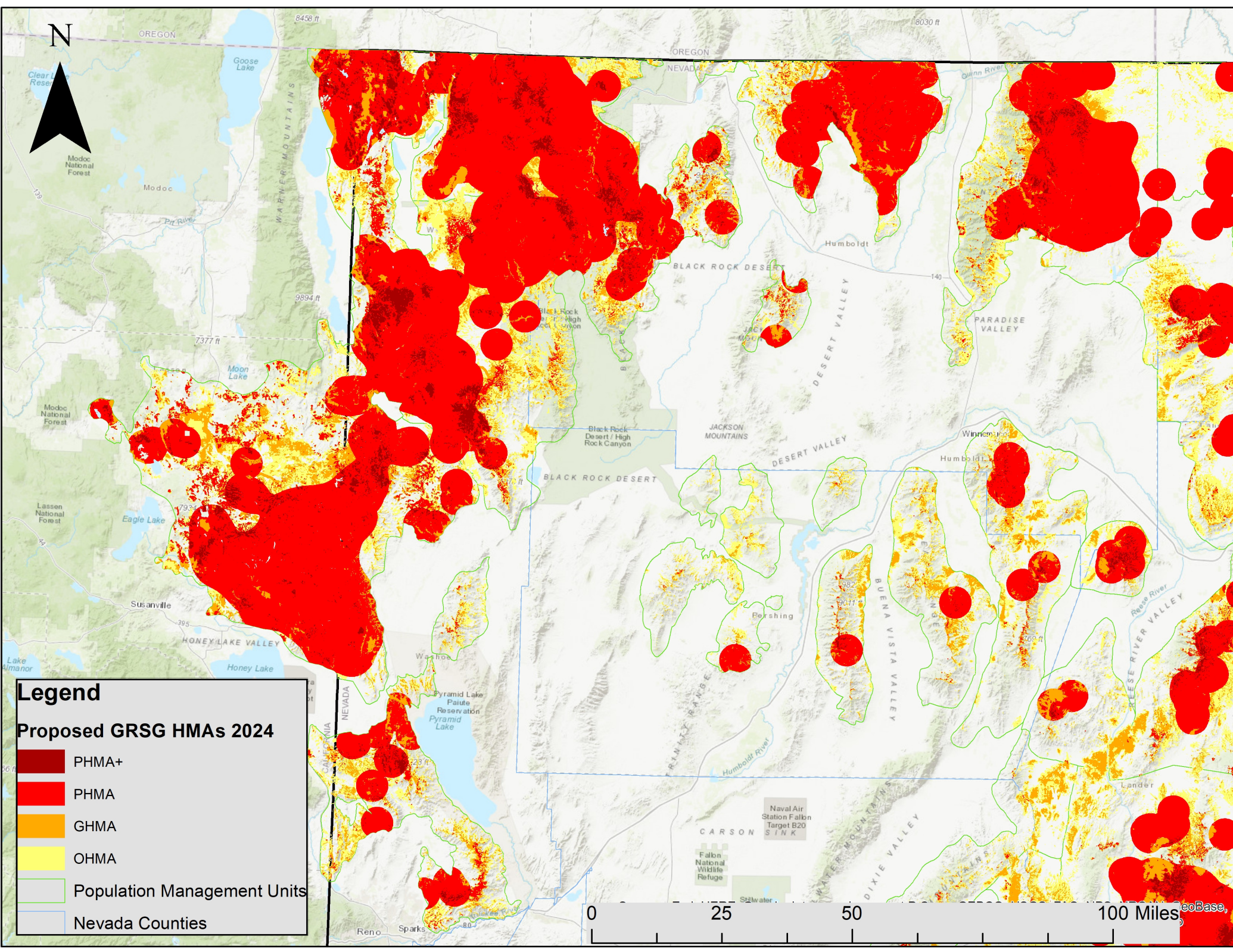


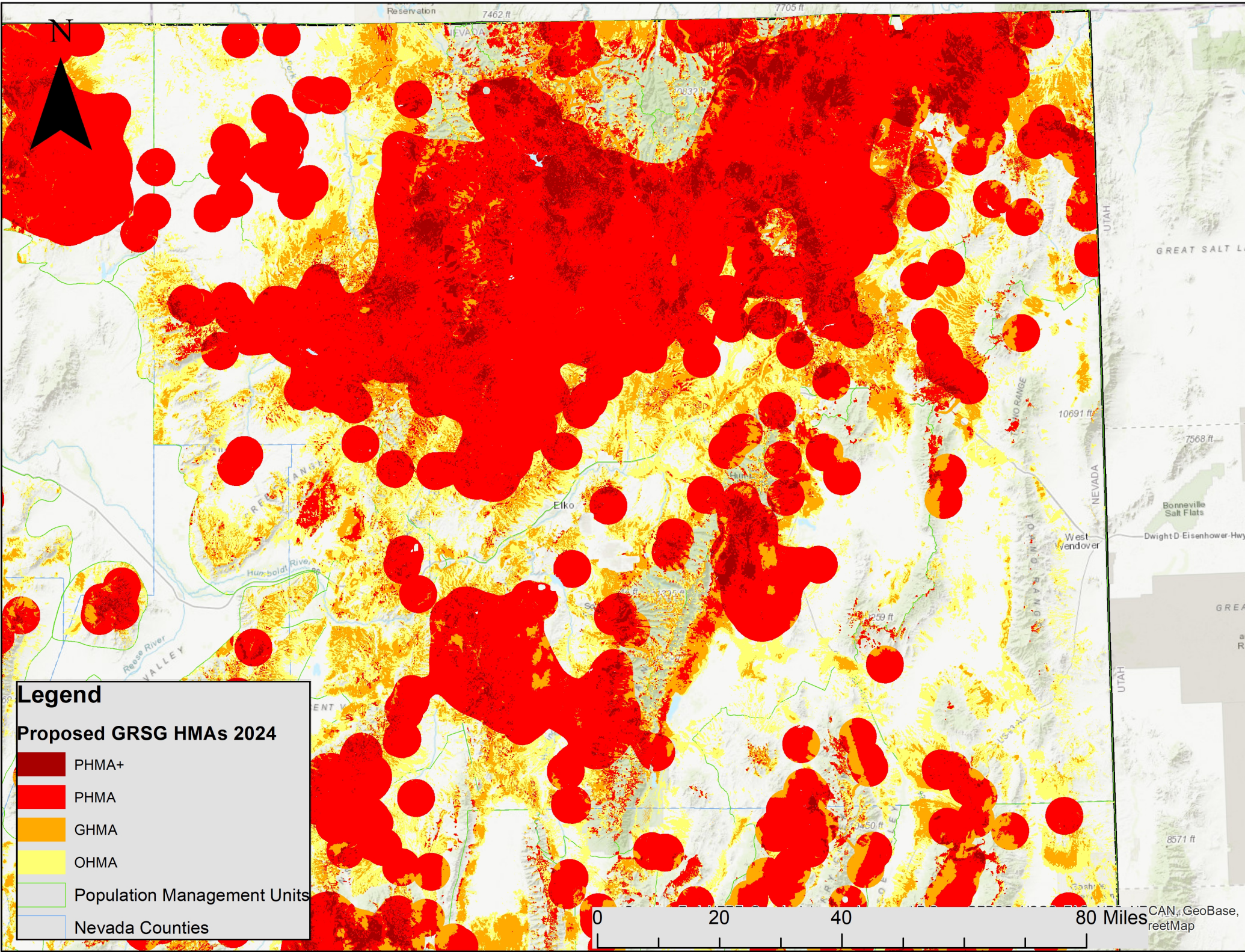


Legend

Proposed GRSG HMAs 2024

- PHMA+
- PHMA
- GHMA
- OHMA
- Population Management Units
- Nevada Counties





Legend

Proposed GRSG HMAs 2024

- PHMA+
- PHMA
- GHMA
- OHMA
- Population Management Units
- Nevada Counties

