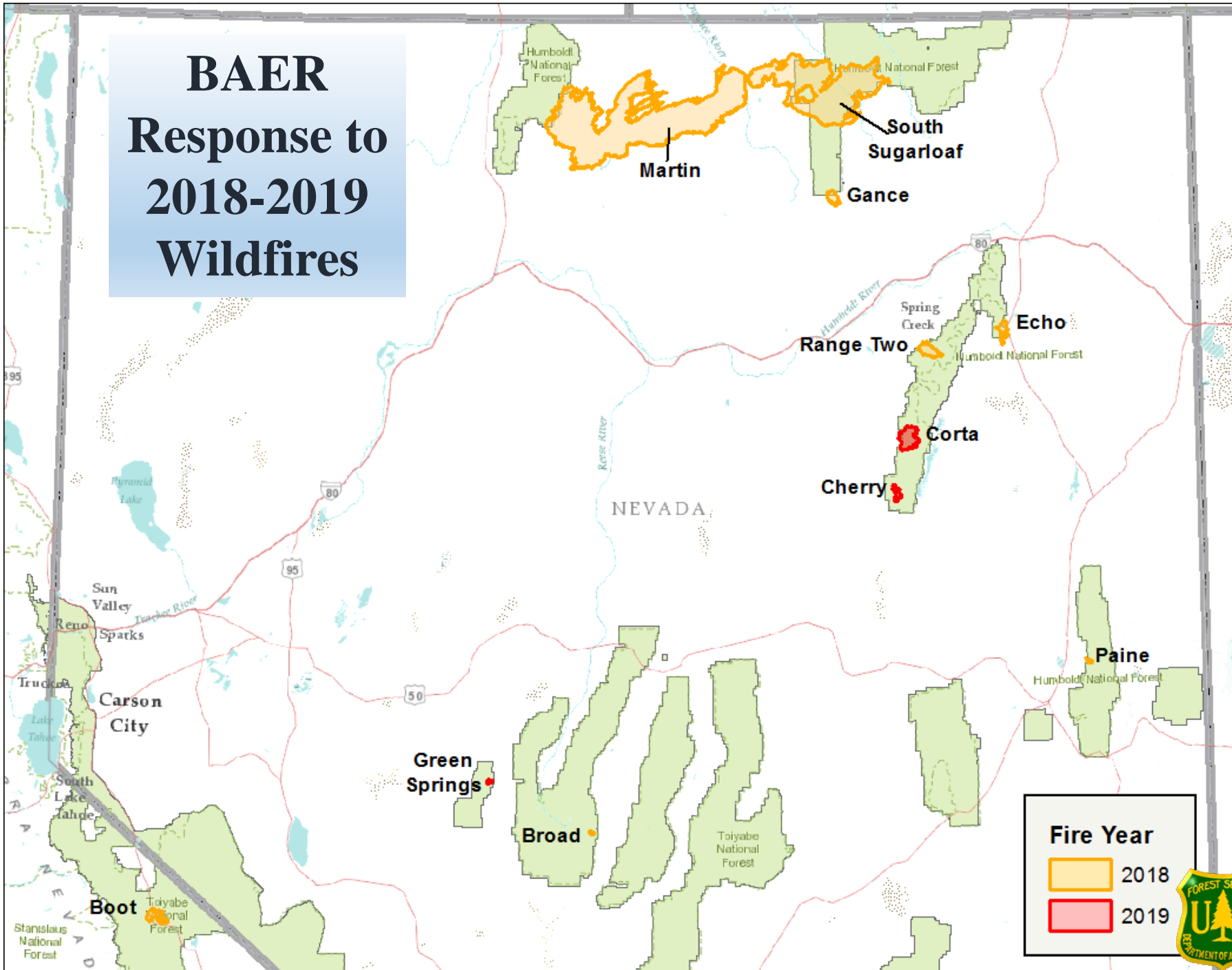


# Humboldt-Toiyabe National Forest 2018-2019 BAER Overview

Sagebrush Ecosystem Council – February 25, 2020  
Kendal Young, Natural Resource and Planning Staff Officer



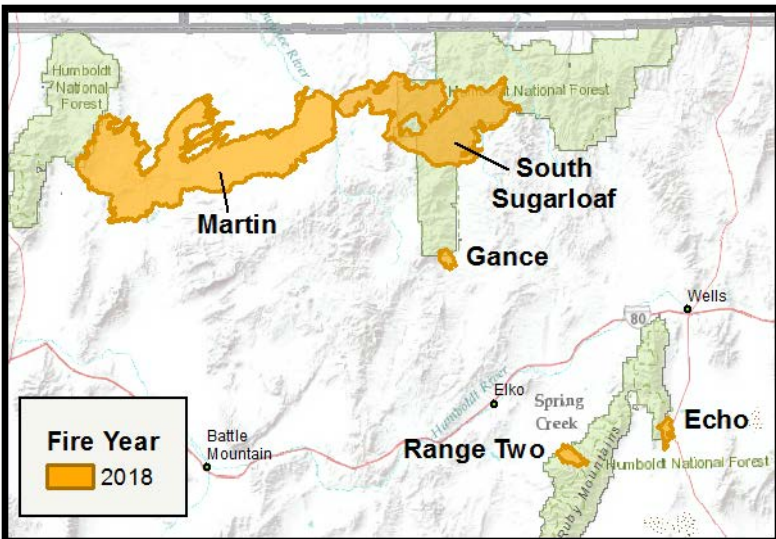
# BAER Response to 2018-2019 Wildfires



# Humboldt-Toiyabe National Forest

## 2018 Fires (>500 acres)

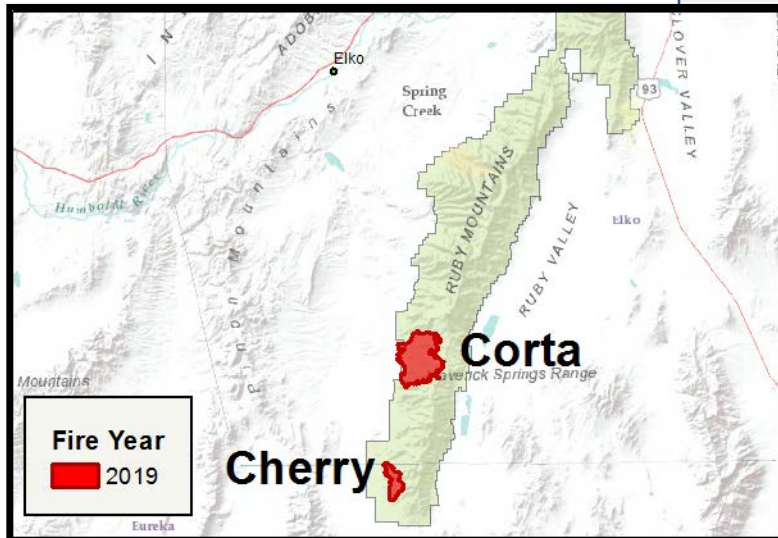
Fire	<u>Acres Burned</u>	
	Total	FS
Boot	6,974	6,598
Broad	522	522
Echo	5,434	1,011
Gance	6,446	2,970
Martin	441,270	3,582
Paine	727	306
Range Two	9,196	8,581
South Sugarloaf	233,461	144,868
<b>TOTAL</b>	<b>704,030</b>	<b>168,438</b>



# Humboldt-Toiyabe National Forest

## 2019 Fires (>500 acres)

Fire	<u>Acres Burned</u>	
	Total	FS
Cherry	3,499	3,499
Corta	16,527	15,833
Green Springs	733	733
<b>TOTAL</b>	<b>20,759</b>	<b>20,065</b>





# Burned Area Emergency Response

Emergency Assessment  
and Stabilization



~~BAER~~ Suppression Repair



Rehabilitation  
and Restoration



# Burned Area Emergency Response

## Identify **Critical Values**

- **Human Life and Safety**
- **Property** – roads and trails, dams, wells, water systems, utility systems, or other significant investments on NFS lands
- **Natural Resources** – water, soil, hydrological function, Federal T&E species & critical habitat, native communities recovery
- **Cultural and Heritage Resources**



# Burned Area Emergency Response

## Identify **Critical Values**



- **BAER only has authority on FS lands.**
- **BAER teams work with Partners to identify, evaluate and resolve issues on lands adjacent to FS.**



# Burned Area Emergency Response

Evaluate **Threats** to Determine **Risk**

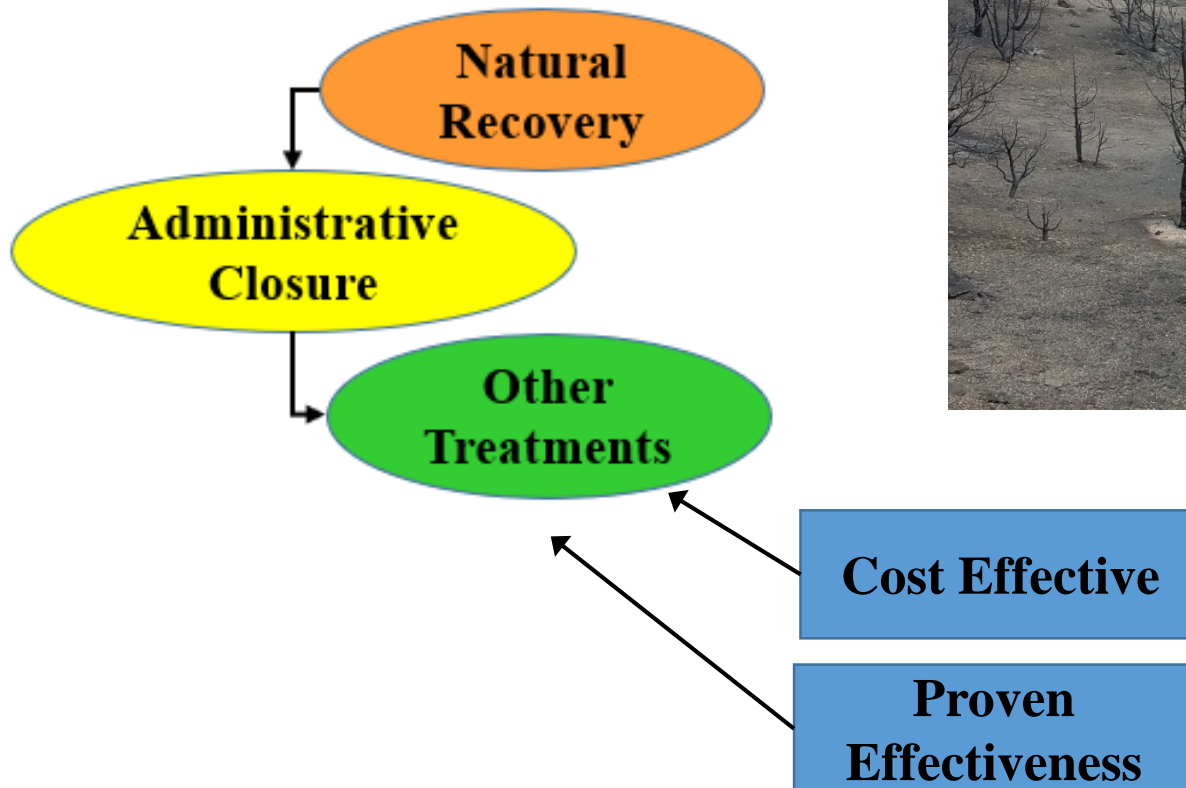
Probability of Damage or Loss	Magnitude of Consequences		
	Major	Moderate	Minor
	<b>RISK</b>		
Very Likely	Very High	Very High	Low
Likely	Very High	High	Low
Possible	High	Intermediate	Low
Unlikely	Intermediate	Low	Very Low





# Burned Area Emergency Response

## Response Hierarchy



**Example**

**Potential Values  
at Risk**

**Range Two Fire SBS**

Looking into the Canyon

**Legend**

- High
- Low
- Moderate

1000 ft



**FS Manual 2523**



# BAER Responses 2018-2019 Fires

Fire	FS Acres Burned	<u>BAER Treatments Approved</u>
		Dollars
Boot	6,598	\$19,260
Broad	522	\$13,650
Echo	1,011	\$11,585
Gance	2,970	\$67,930
Martin	3,582	\$22,654
Paine	306	\$11,100
<b>Range Two</b>	<b>8,581</b>	<b>\$359,995</b>
<b>South Sugarloaf</b>	<b>144,868</b>	<b>\$507,466</b>
<b>Cherry</b>	<b>3,499</b>	<b>\$285,906</b>
<b>Corta</b>	<b>15,833</b>	<b>\$499,377</b>
<b>Approximate Total</b>	<b>187,770</b>	<b>\$1,798,923</b>



# Emergency Stabilization Accomplished 2018-2019 Fires

Fire	FS Acres Burned
Boot	6,598
Broad	522
Echo	1,011
Gance	2,970
Martin	3,582
Paine	306
<b>Range Two</b>	<b>8,581</b>
<b>South Sugarloaf</b>	<b>144,868</b>
Cherry	3,499
Corta	15,833

Approximate % of  
Funded Treatments  
Accomplished

**~ 98%**

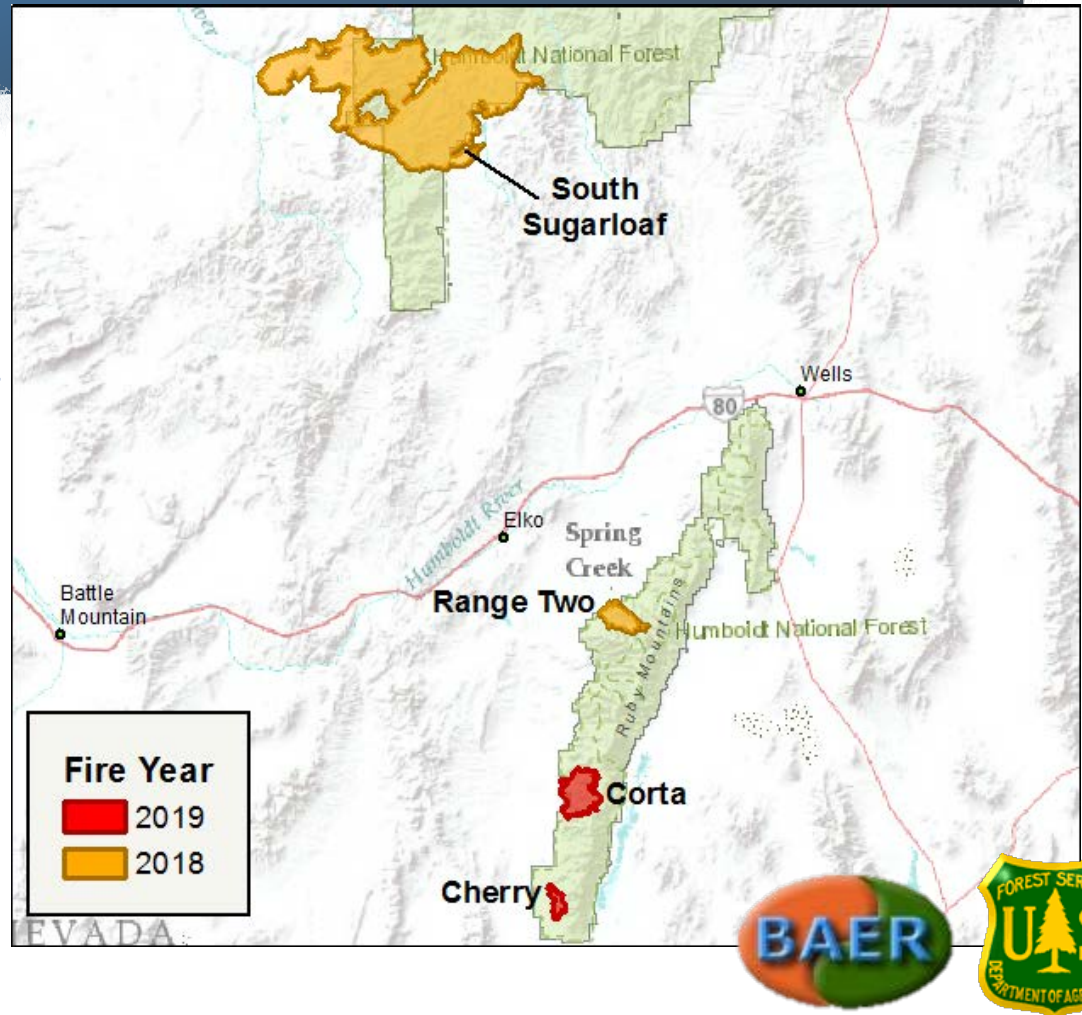
**~ 50%**





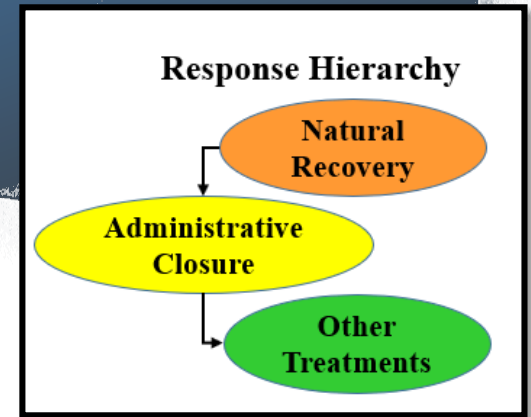
# Largest BAER Responses 2018-2019 Fires

Fire	FS Acres Burned
Range Two	8,581
South Sugarloaf	144,868
Cherry	3,499
Corta	15,833



# BAER Values at Risk & Treatments

RISK		
Very High	Very High	Low
Very High	High	Low
High	Intermediate	Low
Intermediate	Low	Very Low



## • Human Life and Safety

- Flash Flooding
- Debris Flows
- Abandoned Mine Features
- Burned Structures
- Roads & Trails
- Recreation Facilities

## Treatments

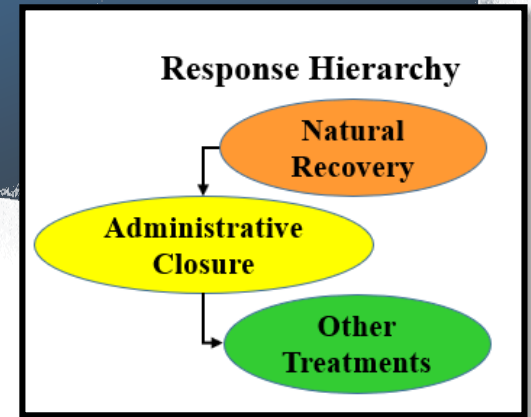
- Area closure (Wildhorse Campground, Right Fork Dispersed Area, Lamoille Highway)
- Post hazard signs
- Safety Barrier(s)
- Abandoned mine closure
- Work with NOAA and Counties
  - Early warning of flooding/debris

Range Two  
South Sugarloaf  
Cherry  
Corta



# BAER Values at Risk & Treatments

RISK		
Very High	Very High	Low
Very High	High	Low
High	Intermediate	Low
Intermediate	Low	Very Low



## • Roads and Trails

- Loss of Infrastructure
- Recreational Facilities

## Treatments

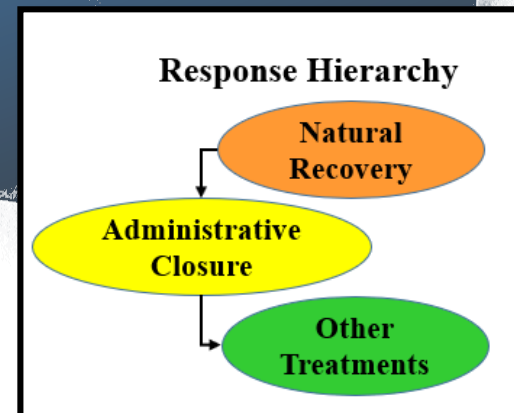
- Temporary Closure
- Road Treatment (94 miles)
  - Recreate Road Drainage Features
  - Install Rolling Dips
  - Clean Culverts, Ditches, Basins
  - Storm Inspection and Response
  - Culvert Replacement

	Miles Treated
Range Two	6
South Sugarloaf	60
Cherry	8
Corta	30



# BAER Values at Risk & Treatments

RISK		
Very High	Very High	Low
Very High	High	Low
High	Intermediate	Low
Intermediate	Low	Very Low



- **Native Plant Recovery**

- Invasive Plant Incursion

Goal: < 20% of the area to maintain a resilient community

## Treatments

- Early Detection & Rapid Response (EDRR)
  - Limited chemical treatment

	Acres Treated
Range Two	~10
South Sugarloaf	~1,768
Cherry	Spring 2020
Corta	Spring 2020





# Post-Fire Needs Not Covered by BAER

- Pre-existing Repairs/Issues
- Suppression Repair Issues
- Habitat Rehabilitation and Restoration
  - Wildlife Habitat (mule deer, pronghorn, elk, sage grouse, Lahontan cutthroat trout)



- Major Repairs to Facilities
- Additions in Forest Service Capacity



# Post-Fire Needs Not Covered by BAER

- Range Improvements
  - Fences, water development, etc

## Fencing:

- Cherry ~ 10 miles, \$180,000
- Corta ~ 9 miles, \$162,000
- Echo ~ 5 miles, \$90,000
- Gance ~ 6 miles, \$108,000
- South Sugarloaf ~ 161 miles, \$2,898,000



## Water Developments:

- Cherry ~ \$20,000
- South Sugarloaf ~ \$15,000



# Partnerships and Leveraging



- FS, BLM, NDOT and the National Weather Service
  - Stations to provide flood/debris flow alerts
  - Hazard trees along highway corridors
  - Lamoille Highway repair/re-opening
- FS and NDOW
  - Installing additional hazard signs
  - Seeding, and weed treatments
  - Habitat evaluation
- Shared Stewardship
- Joint Chiefs Proposal for South Sugarloaf



# Thank You! Questions?

