

2018 Nevada Wildfire Update for Sagebrush Ecosystem Council

2018 Wildfire Summary Statistics for Nevada (from the Great Basin Coordination Center):

GREAT BASIN COORDINATION CENTER

2018 Year-to-Date Fires and Acres By State & Agency

◆(Fires & Acres reported by land protection via National Interagency Situation Reporting Program)

Updated:◆ 01/31/19

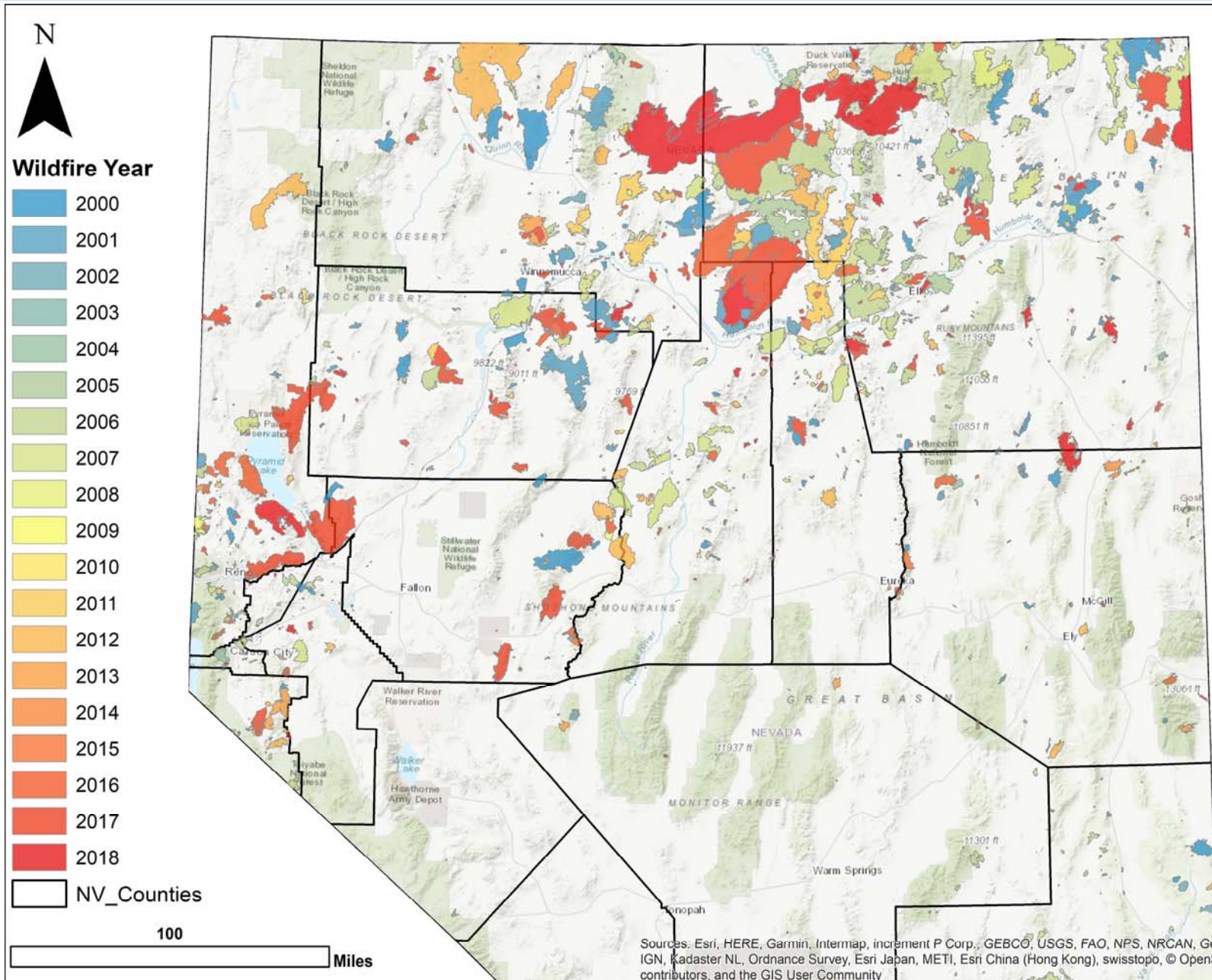
	Human Caused Fires	Human Caused Acres	Lightning Caused Fires	Lightning Caused Acres	WILDFIRE TOTALS	
					FIRES	ACRES

NEVADA

Bureau of Land Mgmt	BLM	155	489,262	175	131,090	330	620,352
Department of Defense	DOD	1	2	2	3,242	3	3,244
NV Counties	C&L	144	82,615	38	113,928	182	196,543
U.S. Forest Service	FS	34	23,075	69	147,129	103	170,204
U.S. Fish & Wildlife Service	FWS	4	1	1	0	5	1
National Park Service	NPS	15	52	1	0	16	52
Nevada Division of Forestry	ST	6	125	2	5	8	130
Tribal	Other	2	5,146	0	6,294	2	11,440
		361	600,278	288	401,688	649	1,001,966

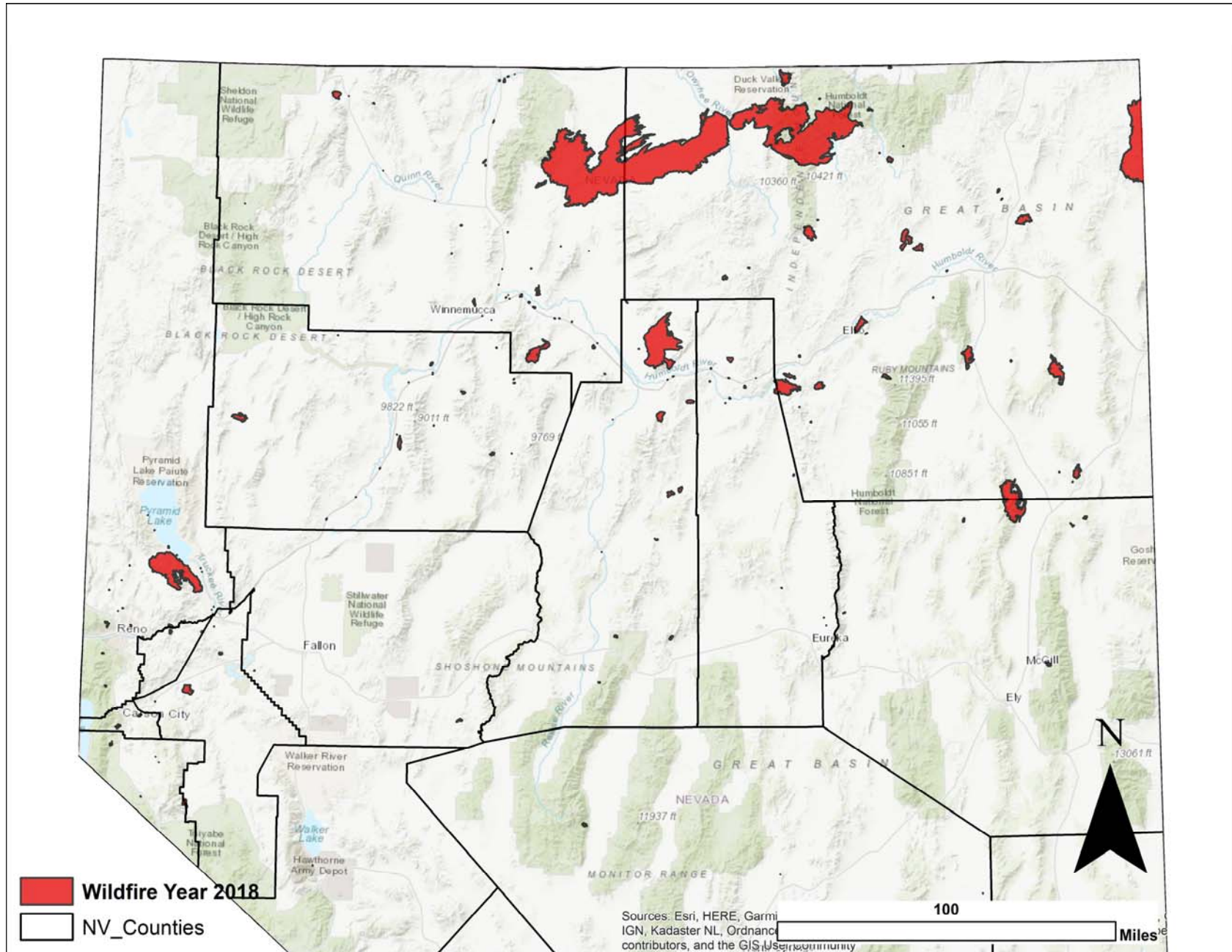
2018 Nevada Wildfire Update for Sagebrush Ecosystem Council

Wildfire Perimeters in Northern Nevada since the Year 2000:



2018 Nevada Wildfire Update for Sagebrush Ecosystem Council

Wildfire Perimeters in Northern Nevada in 2018:



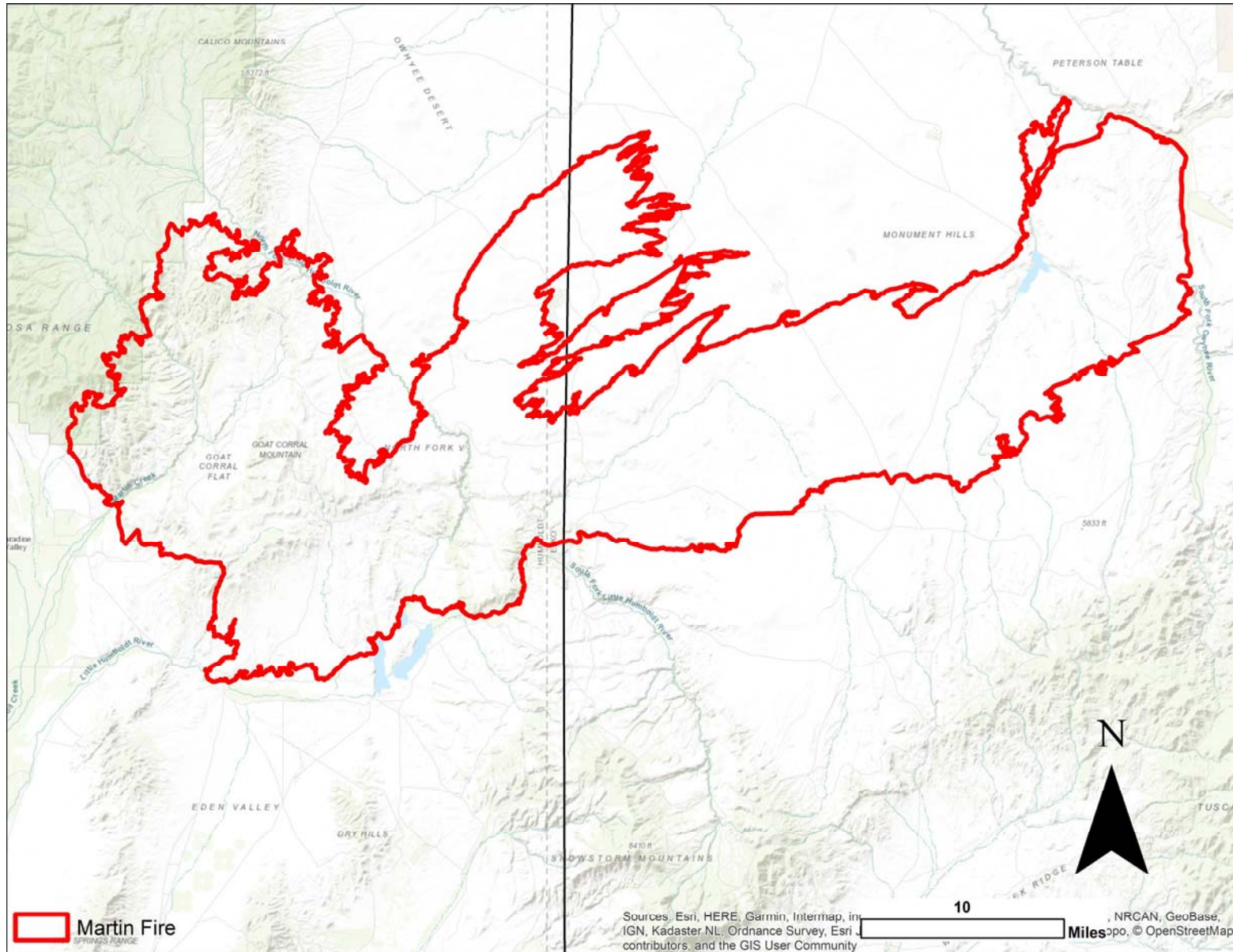
2018 Nevada Wildfire Update for Sagebrush Ecosystem Council

Large Nevada Wildfires Contained in 2018 (from the Nevada Wildfire Information Map as of 4/12/2019):

The Martin Fire:	431,754 acres
The Goose Creek Fire:	132,220 total acres; 63,789 in Nevada
The Perry Fire:	51,386 acres
The Hogan Fire:	10,903 acres
The Gregg Fire:	10,221 acres
The Sheep Creek Fire	59,741 acres
The South Sugarloaf Fire:	233,462 acres
The County Line Fire:	12,978 acres
The Goshute Cave Fire:	31,016 acres

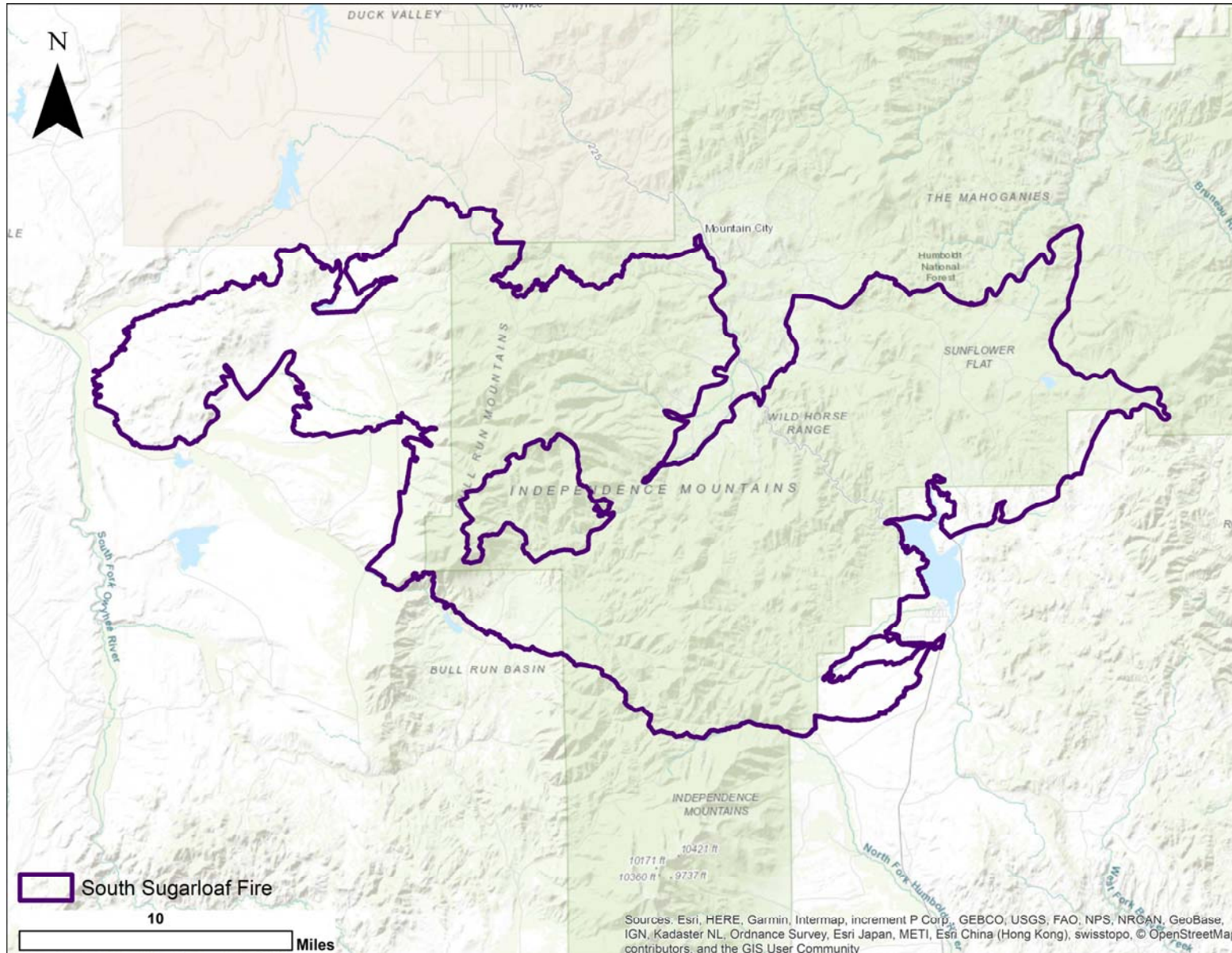
2018 Nevada Wildfire Update for Sagebrush Ecosystem Council

Martin Fire Perimeter:



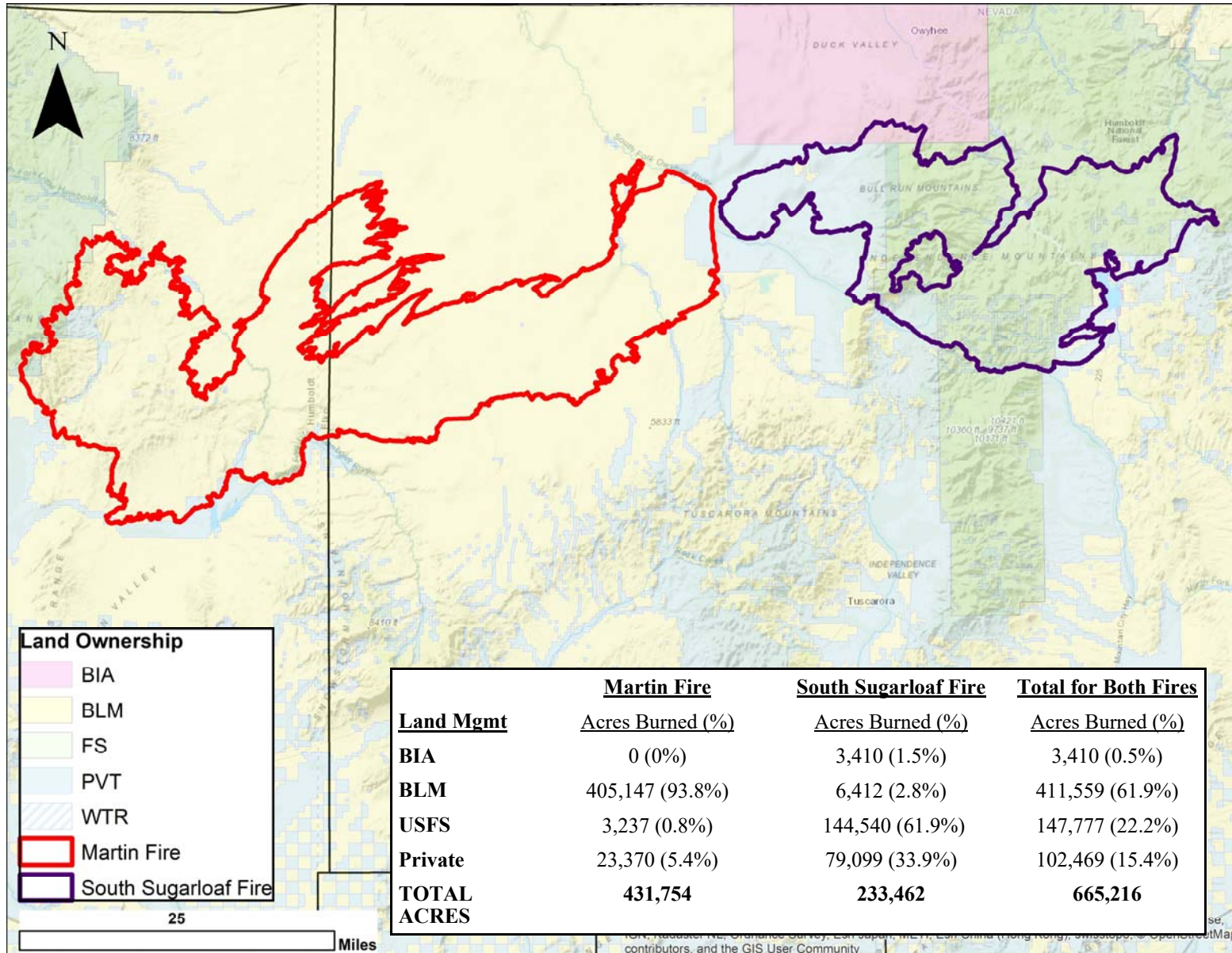
2018 Nevada Wildfire Update for Sagebrush Ecosystem Council

South Sugarloaf Fire Perimeter:



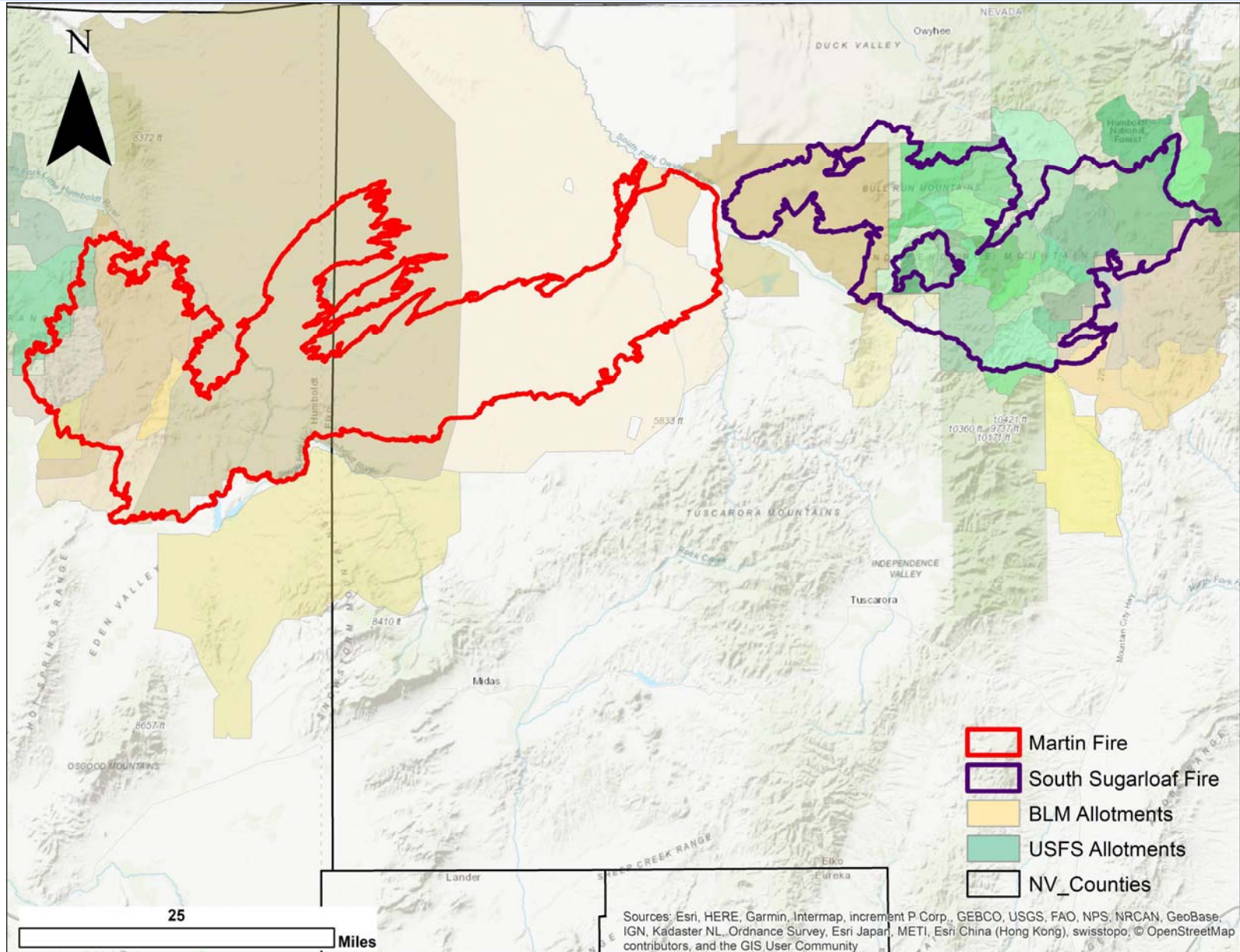
2018 Nevada Wildfire Update for Sagebrush Ecosystem Council

Land Management/Ownership in the Martin Fire and South Sugarloaf Fire Perimeters:



2018 Nevada Wildfire Update for Sagebrush Ecosystem Council

Grazing Allotments Intersecting the Martin Fire and South Sugarloaf Fire Perimeters:



2018 Nevada Wildfire Update for Sagebrush Ecosystem Council

Allotments Likely Impacted by the Martin Fire:

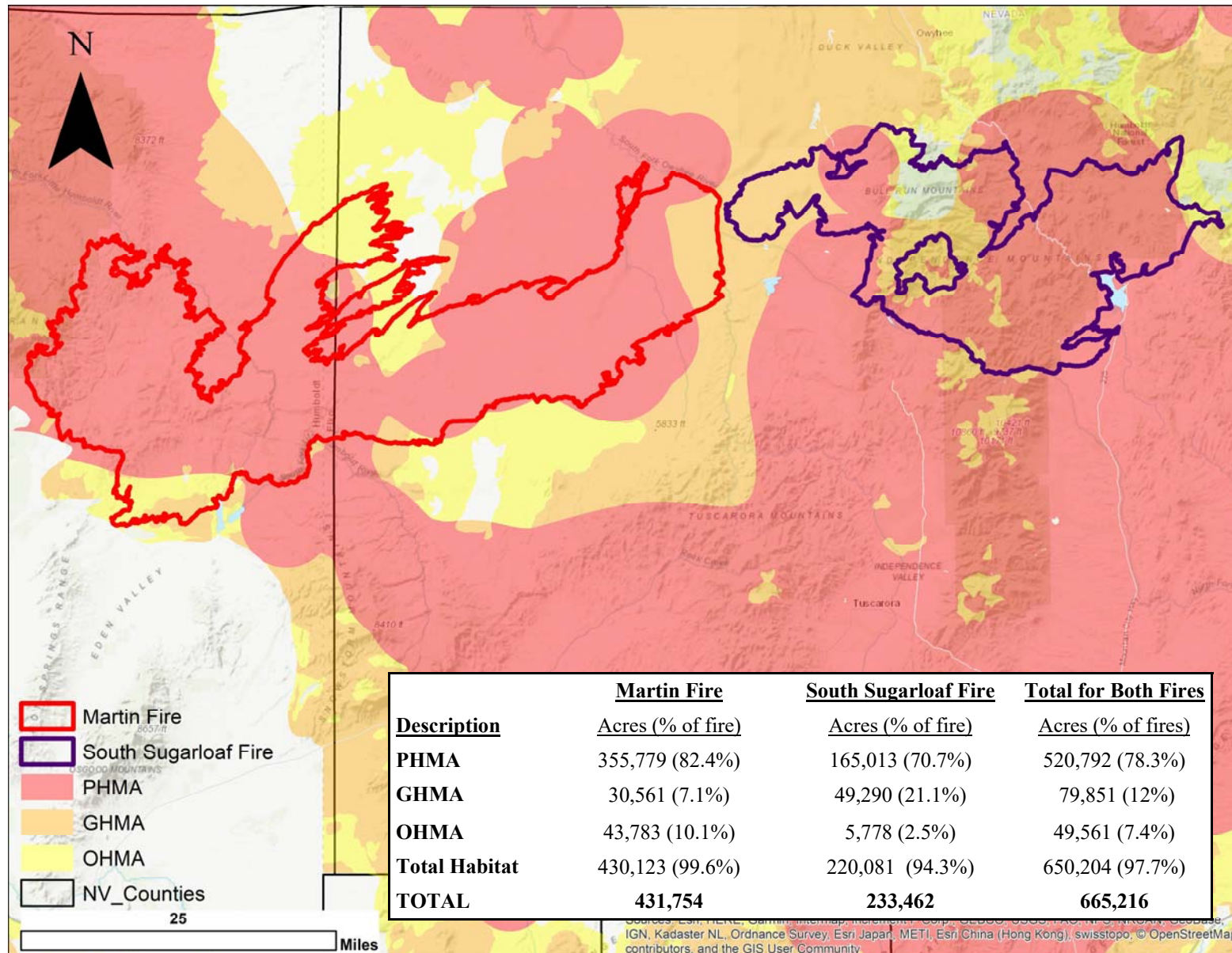
Bullhead	BLM
Buttermilk	BLM
Little Owyhee	BLM
Martin Creek	BLM
Owyhee	BLM
Petan-Owyhee Unit	BLM
Spring Creek	BLM
Sugar Loaf	BLM
VN Pocket Petan	BLM
William Stock	BLM
Buttermilk	USFS
Martin Basin	USFS

Allotments Likely Impacted by South Sugarloaf Fire:

Evans FFR	BLM
Indian Creek FFR	BLM
Lime Mountain Field	BLM
North Four Mile	BLM
Wild Horse Group	BLM
Allied	USFS
Badger	USFS
Beadles Creek	USFS
Beaver	USFS
Blue Jacket S&G	USFS
Chicken Creek	USFS
Clear Creek	USFS
Cobb Creek	USFS
Columbia Basin	USFS
Deep Creek C&H	USFS
East Blue Jacket	USFS
Gravel Creek	USFS
Haystack Mountain	USFS
Mountain City	USFS
Riffe Creek C&H	USFS
Slaughterhouse	USFS
Sunflower Flat	USFS
Telephone C&H	USFS
Tennessee Mountain	USFS
Timber Gulch	USFS
Van Duzer	USFS
West Bruneau River	USFS
White Rock	USFS
White Rock S&G	USFS
Wild Horse C&H	USFS
Wild Horse S&G	USFS
Wood Gulch	USFS

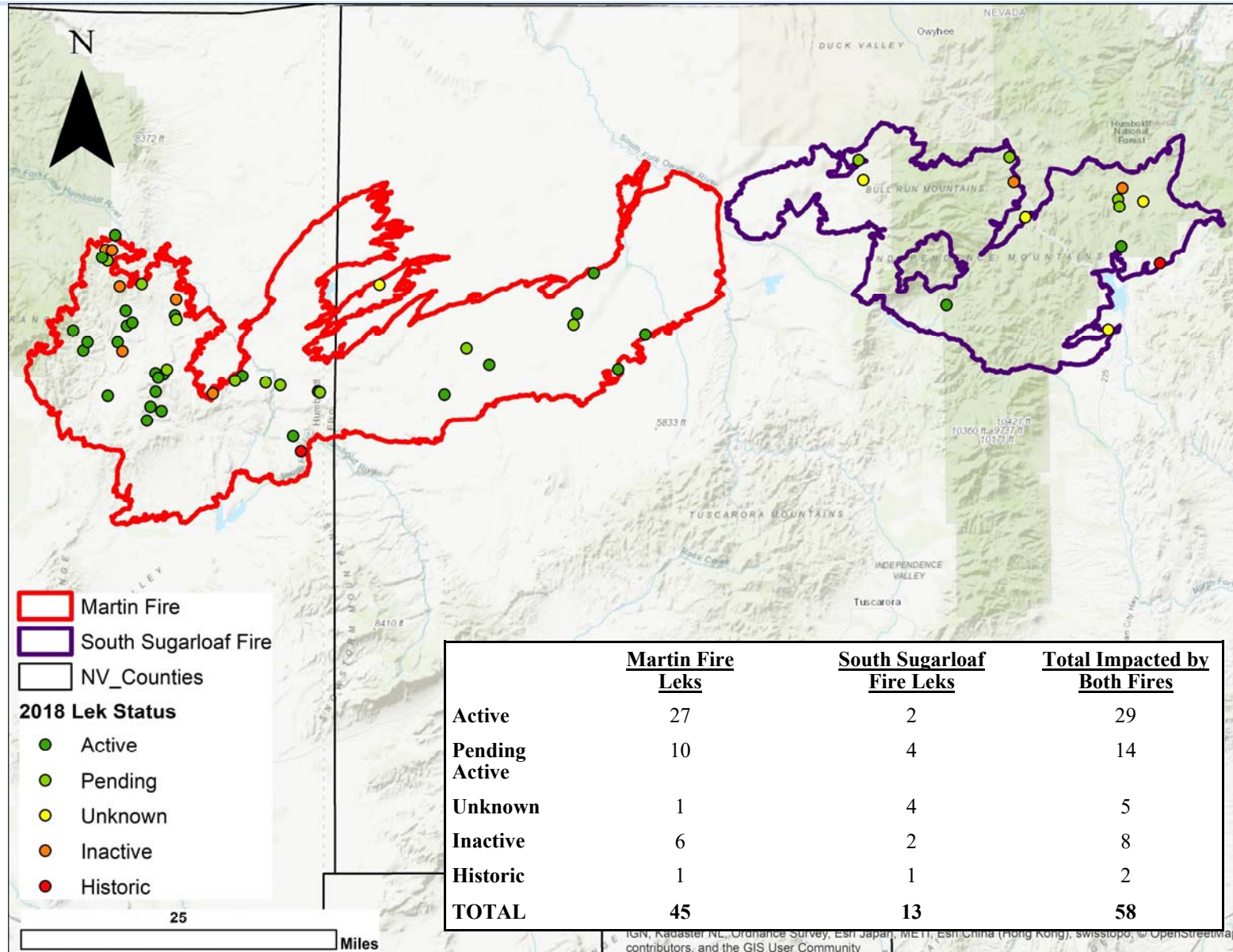
2018 Nevada Wildfire Update for Sagebrush Ecosystem Council

Landscape-Scale GRSG Habitat in the Martin Fire and South Sugarloaf Fire Perimeters:



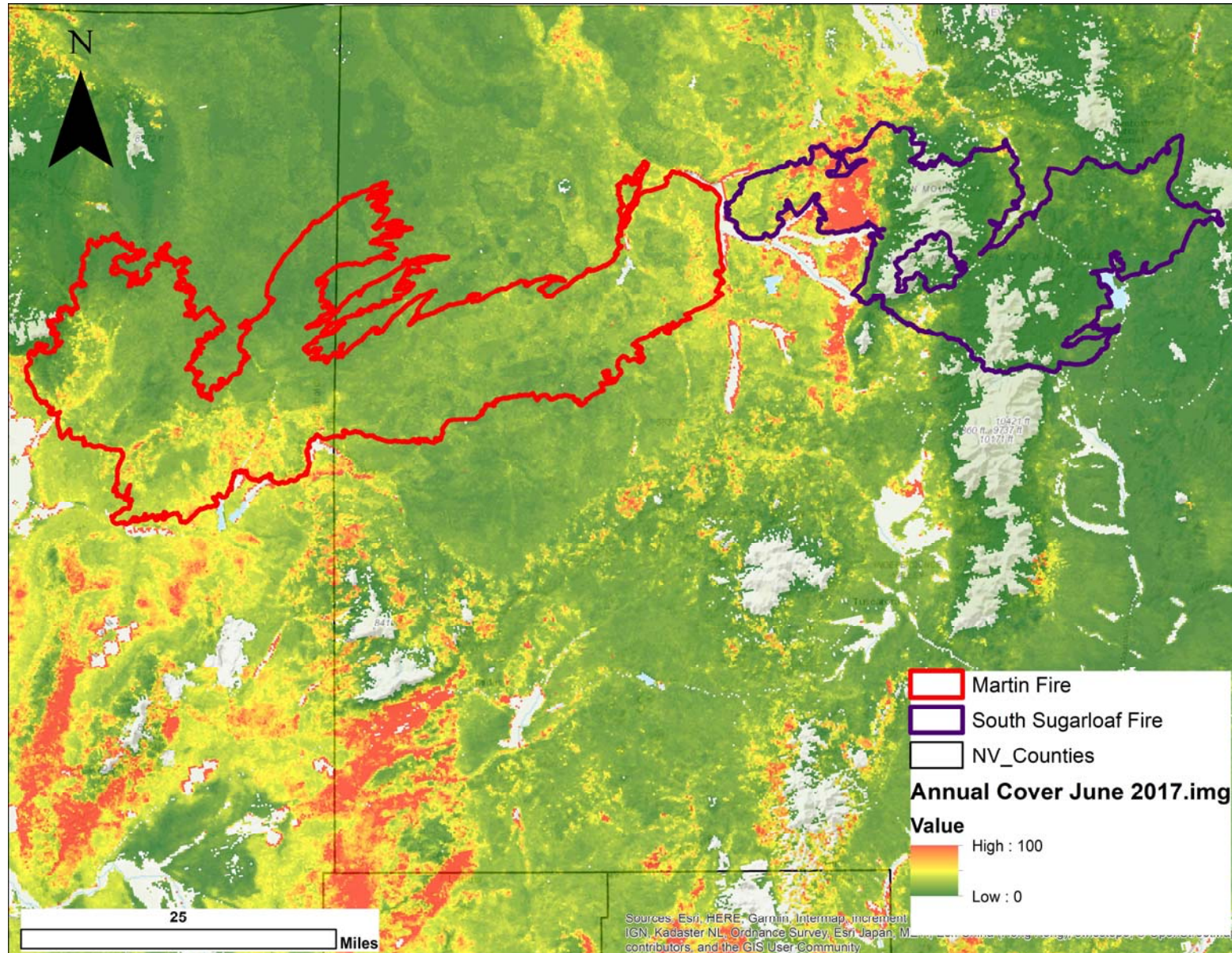
2018 Nevada Wildfire Update for Sagebrush Ecosystem Council

GRSG Leks in the Martin Fire and South Sugarloaf Fire Perimeters:



2018 Nevada Wildfire Update for Sagebrush Ecosystem Council

Annual Grass Cover found in June of 2017 within what are now the Martin Fire and South Sugarloaf Fire Perimeters:



2018 Nevada Wildfire Update for Sagebrush Ecosystem Council

R&R within the Martin Fire and South Sugarloaf Fire Perimeters:

