

## Nevada Wildfire Update for Sagebrush Ecosystem Council

Year to Date Summary Statistics for Nevada (from the Great Basin Coordination Center):

### GREAT BASIN COORDINATION CENTER

#### 2018 Year-to-Date Fires and Acres By State & Agency

♦(Fires & Acres reported by land protection via National Interagency Situation Reporting Program)

Updated: ♦ 08/26/18

21:01

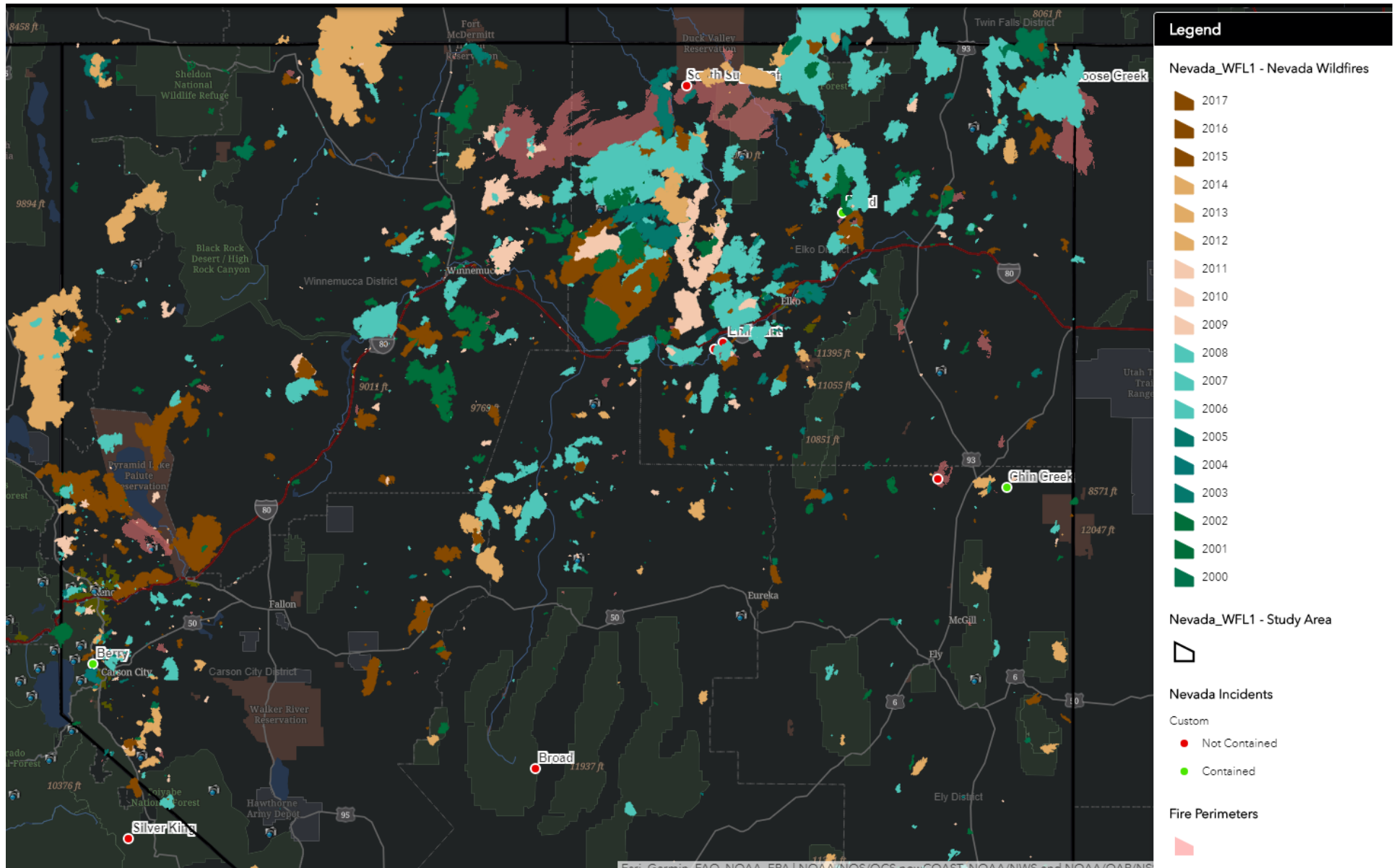
Human Caused Fires	Human Caused Acres	Lightning Caused Fires	Lightning Caused Acres	WILDFIRE TOTALS	
				FIRES	ACRES

#### NEVADA

Bureau of Land Mgmt	BLM	112	485,348	176	195,143	288	680,491
Department of Defense	DOD	1	2	2	3,240	3	3,242
NV Counties	C&L	100	102,848	28	206,534	128	309,382
U.S. Forest Service	FS	13	6,421	59	2,671	72	9,092
U.S. Fish & Wildlife Service	FWS	2	0	1	0	3	0
National Park Service	NPS	9	39	1	0	10	39
Nevada Division of Forestry	ST	13	18,037	5	7	18	18,044
Tribal	Other	1	5,082	0	2,884	1	7,966
		251	617,777	272	410,479	523	1,028,256

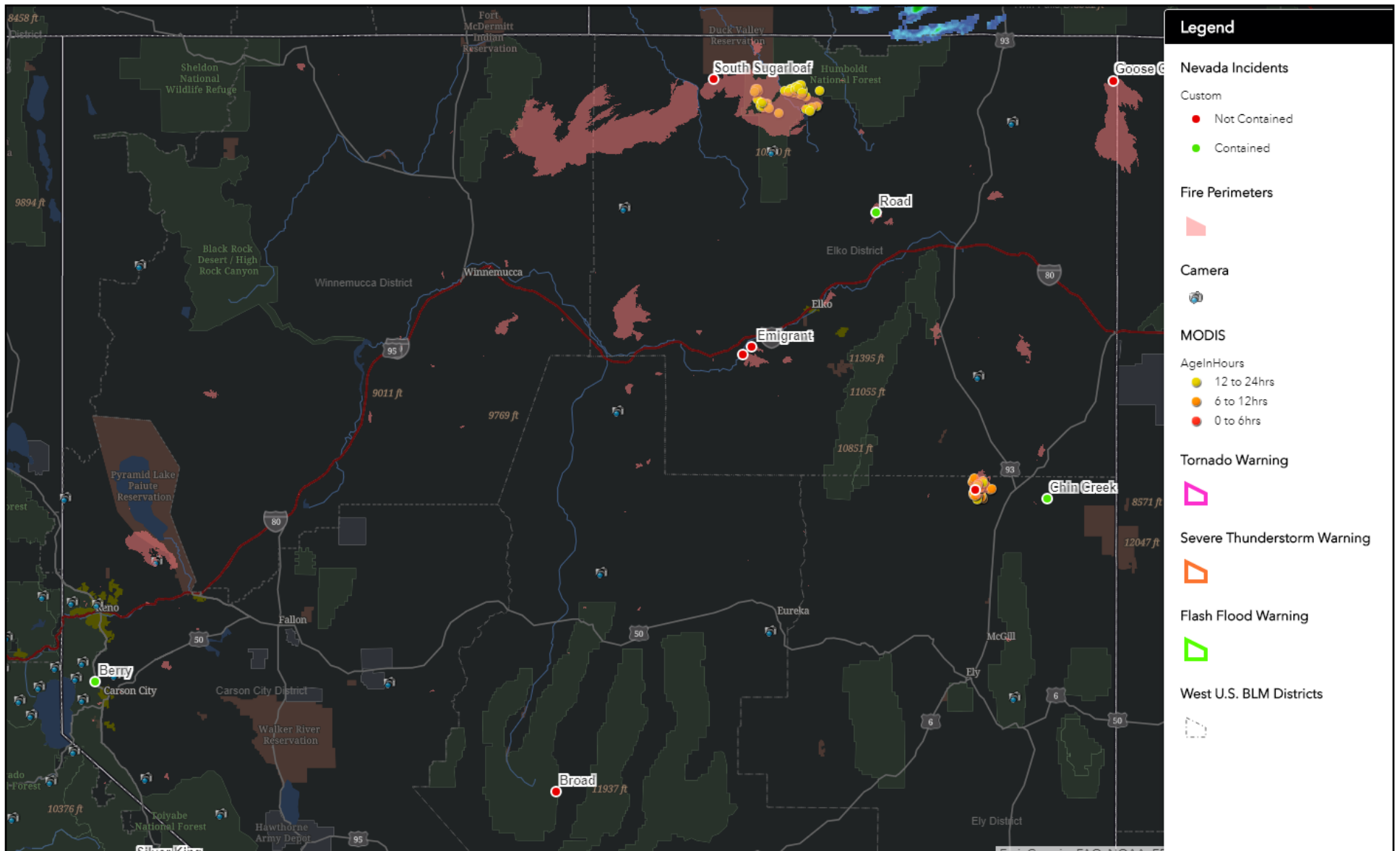
## Nevada Wildfire Update for Sagebrush Ecosystem Council

Locations of Wildfire in Nevada since the Year 2000 (from the Nevada Wildfire Information Map):



## Nevada Wildfire Update for Sagebrush Ecosystem Council

Large Nevada Wildfire Locations to Date in 2018 (from the Nevada Wildfire Information Map as of 8/27/2018):



## Nevada Wildfire Update for Sagebrush Ecosystem Council

### Large Nevada Wildfires Contained to Date in 2018 (from the Nevada Wildfire Information Map as of 8/27/2018):

The Martin Fire:	431,754 acres
The Goose Creek Fire:	132,220 total acres; 63,789 in Nevada
The Perry Fire:	51,386 acres
The Hogan Fire:	10,903 acres
The Gregg Fire:	10,221 acres
The Sheep Creek Fire	59,741 acres

### Updates on Nevada Wildfires Not Yet Contained to Date in 2018 (from Inciweb as of 8/27/2018):

The South Sugarloaf Fire:	200,692 acres at 53% containment
The County Line Fire:	12,833 acres at 50% containment
The Goshute Cave Fire:	15,000 acres at 10% containment

## Nevada Wildfire Update for Sagebrush Ecosystem Council

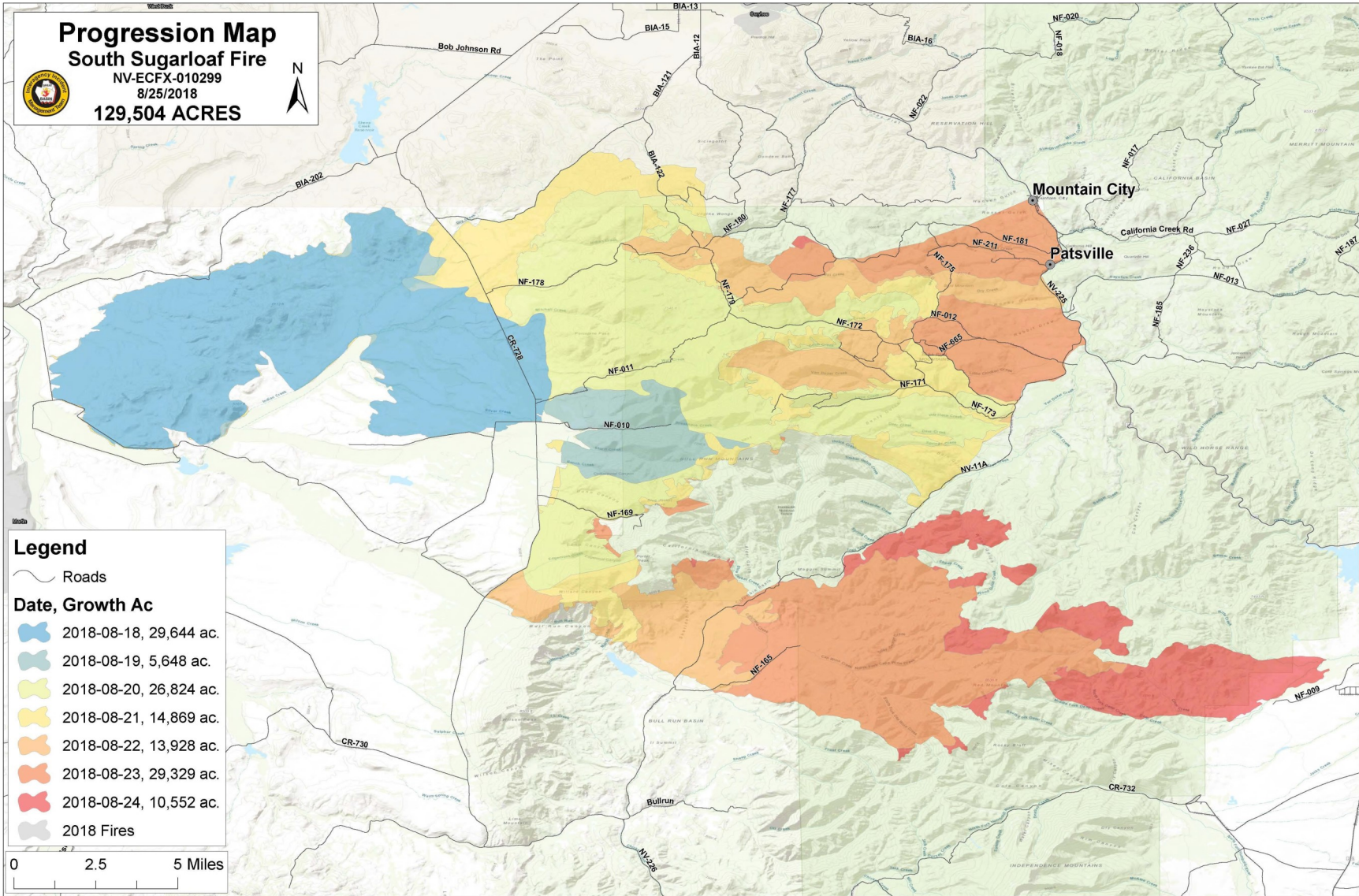
### Information on the South Sugarloaf Fire (from Inciweb as of 8/27/2018):

- 200,692 acres at 53% containment
- Caused by lightning
- Originated on Friday, August 17th
- Located Southwest of Owyhee, Nevada, east of the Martin Fire across the Owyhee River
- Predominated by brush (2 feet); tall grass (2.5 feet); and timber (with grass and understory) fuels
- Featured extreme wind-driven runs with short range spotting
- Resources include 16 hand crews, 38 engines, 8 helicopters, 12 bulldozers, 10 water tenders, 721 Total Personnel



## Nevada Wildfire Update for Sagebrush Ecosystem Council

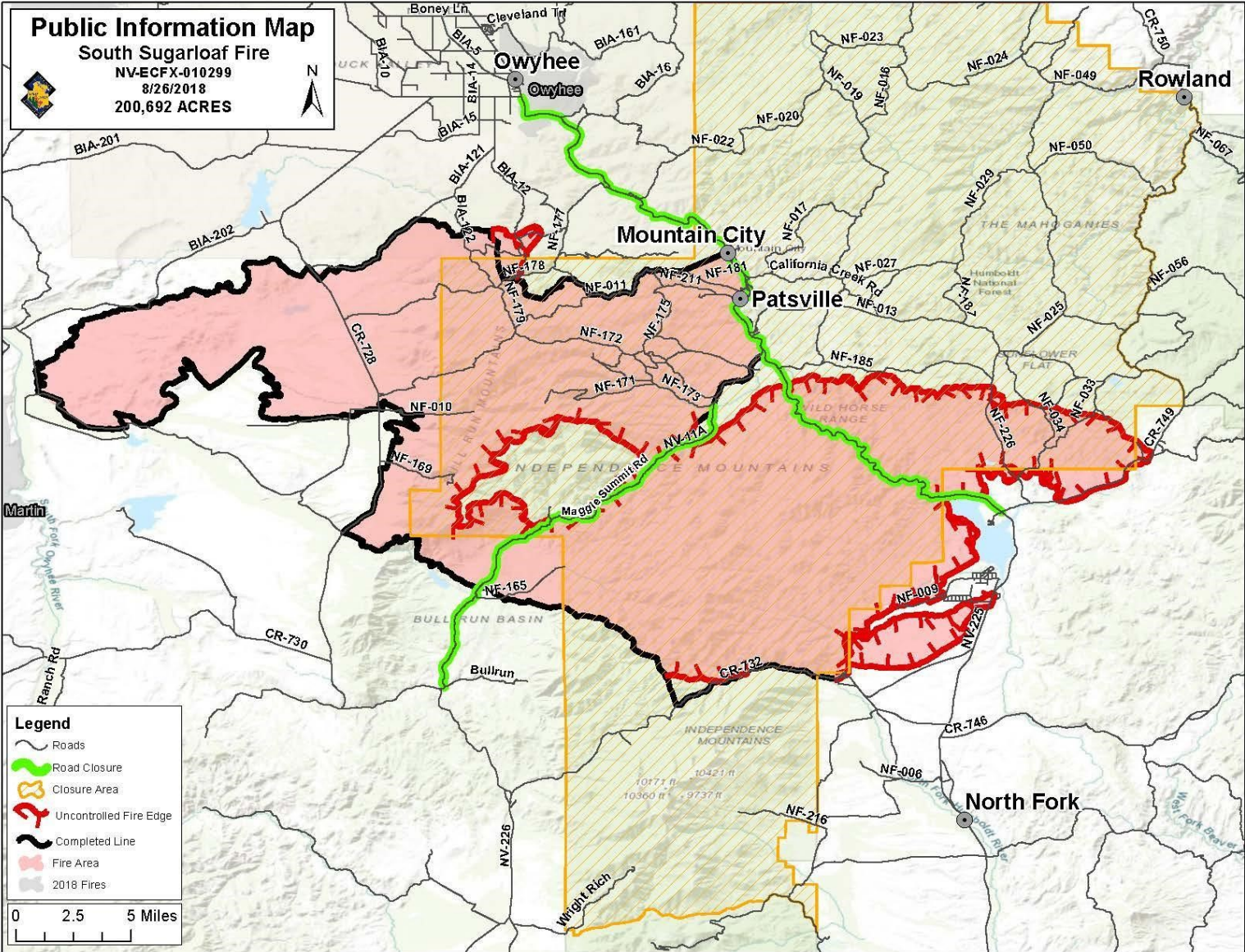
Recent Progression Map of the South Sugarloaf Fire (from Inciweb as of 8/25/2018):





## Nevada Wildfire Update for Sagebrush Ecosystem Council

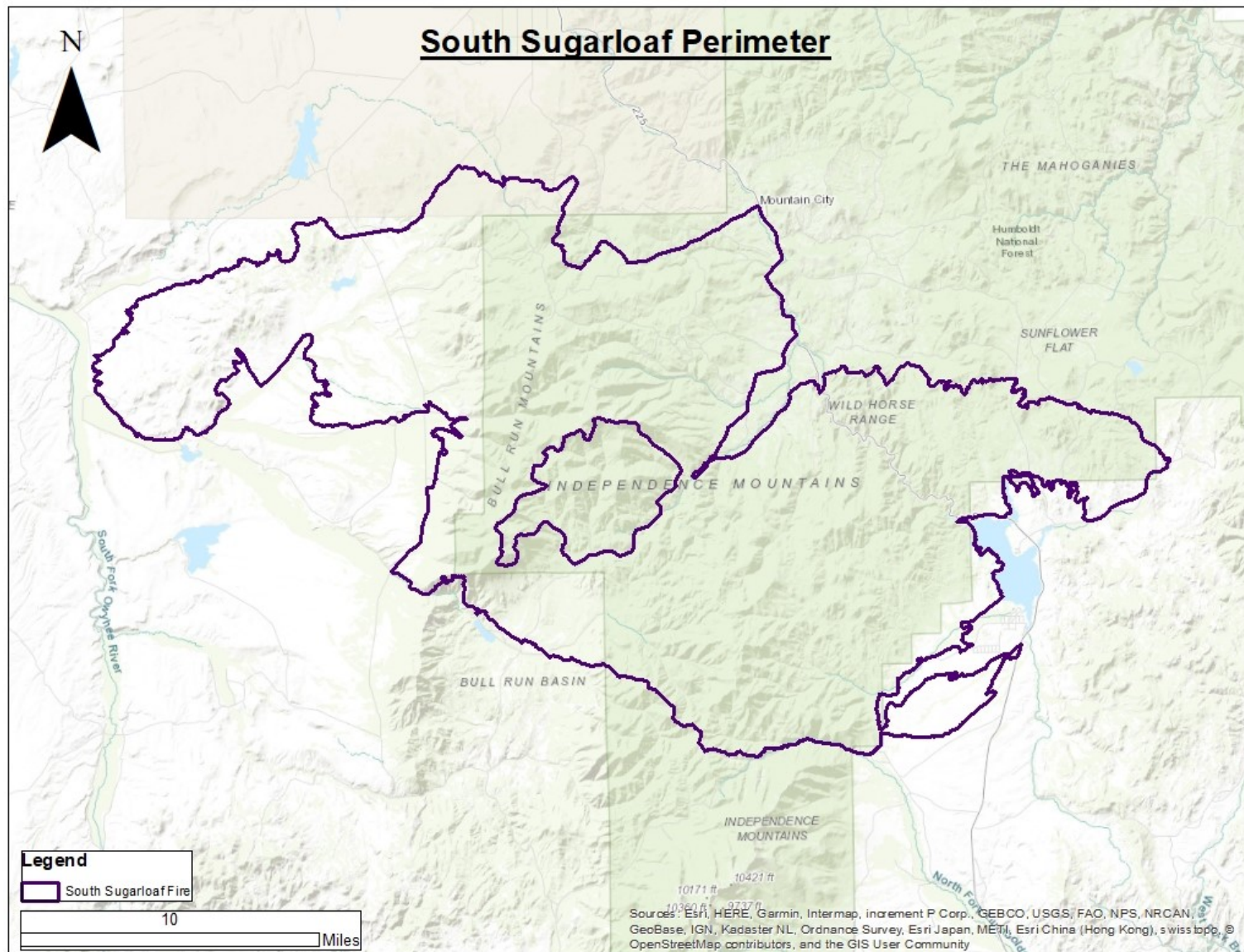
Early Containment Map for the South Sugarloaf Fire (from Inciweb as of 8/26/2018):





## Nevada Wildfire Update for Sagebrush Ecosystem Council

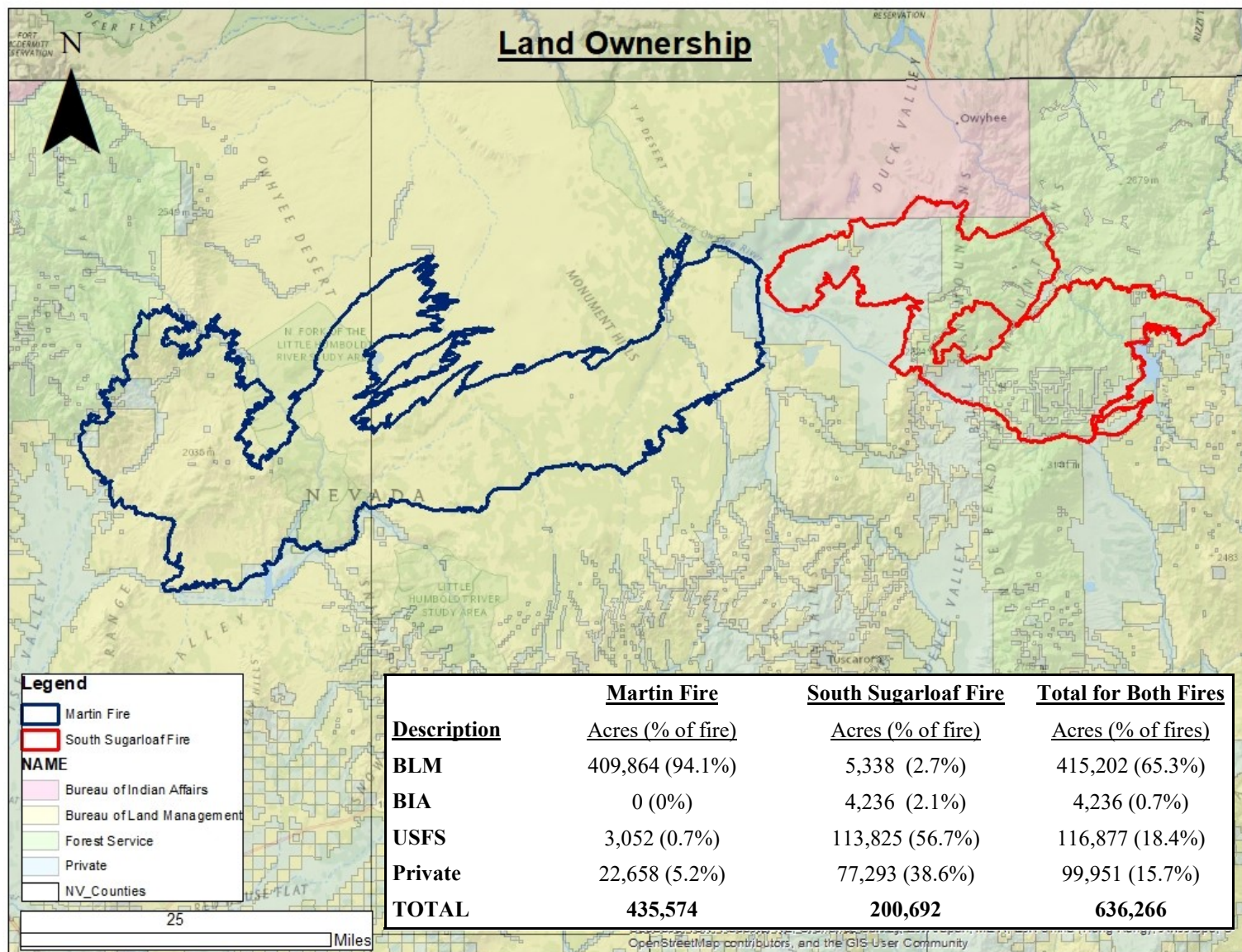
### South Sugarloaf Fire Perimeter:





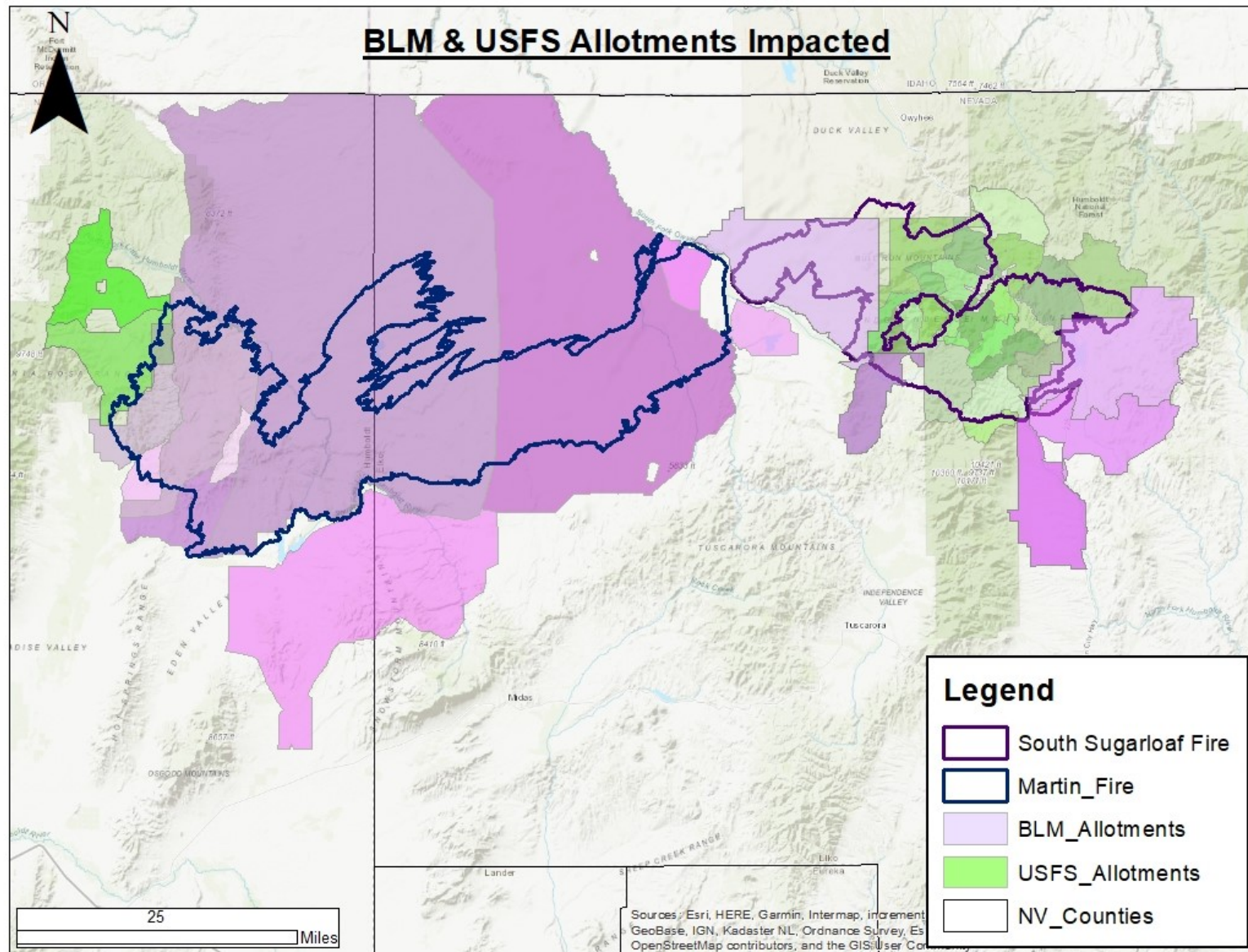
## Nevada Wildfire Update for Sagebrush Ecosystem Council

### Land Ownership in the Martin Fire and South Sugarloaf Fire Perimeters:



## Nevada Wildfire Update for Sagebrush Ecosystem Council

### Grazing Allotments Intersecting the Martin Fire and South Sugarloaf Fire Perimeters:



## Nevada Wildfire Update for Sagebrush Ecosystem Council

### Allotments Likely Impacted by the Martin Fire:

<u>Allotment Name</u>	<u>Agency</u>
Bullhead	BLM
Buttermilk	BLM
Little Owyhee	BLM
Martin Creek	BLM
Owyhee	BLM
Petan-Owyhee Unit	BLM
Spring Creek	BLM
Sugar Loaf	BLM
VN Pocket Petan	BLM
William Stock	BLM
Buttermilk	USFS
Martin Basin	USFS

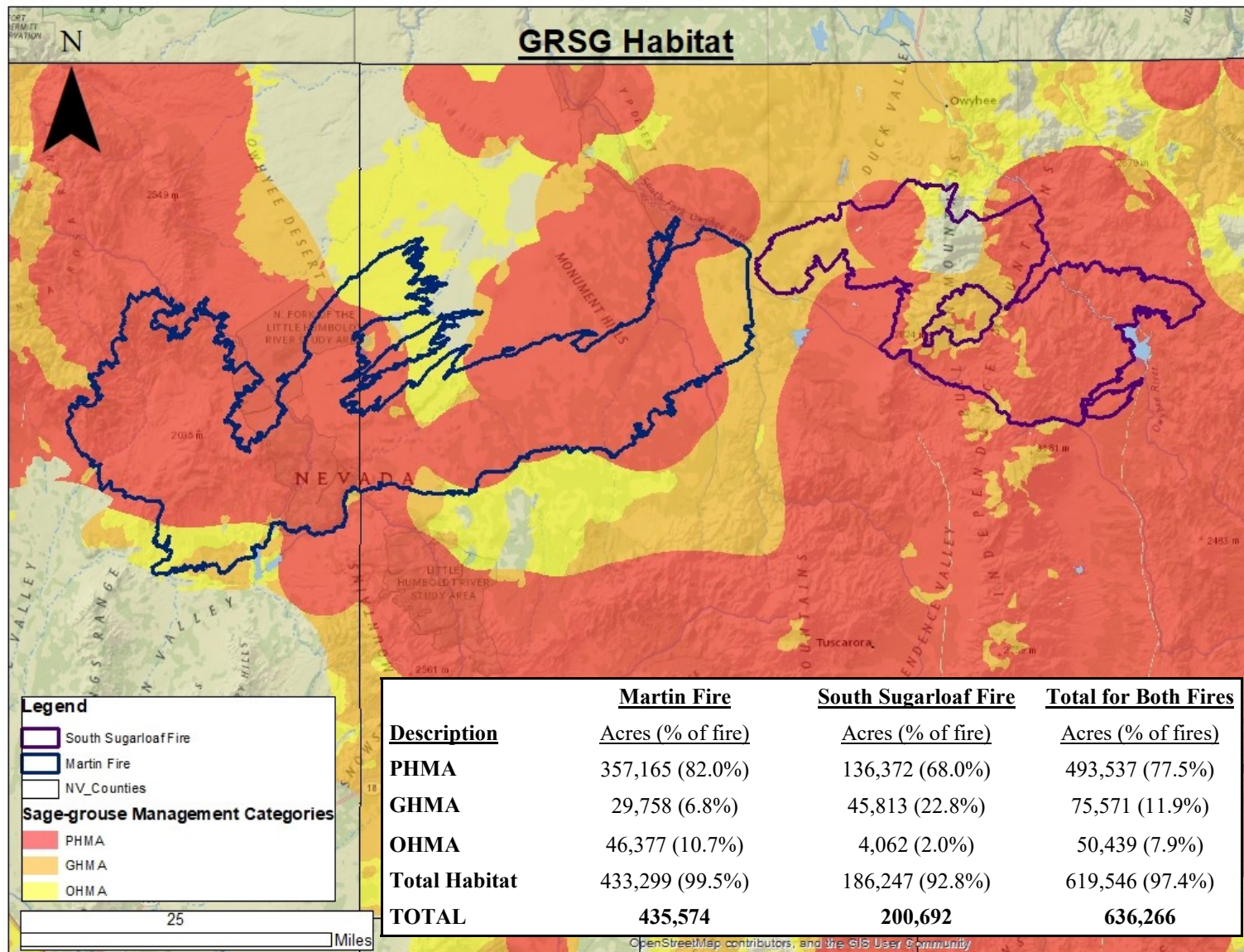
### Allotments Likely Impacted by South Sugarloaf Fire:

<u>Allotment Name (Agency)</u>	<u>Agency</u>
Evans FFR	BLM
Indian Creek FFR	BLM
Lime Mountain Field	BLM
North Four Mile	BLM
Wild Horse Group	BLM
Allied	USFS
Badger	USFS
Beadles Creek	USFS
Beaver	USFS
Blue Jacket SG	USFS
Chicken Creek	USFS
Clear Creek	USFS
Cobb Creek	USFS
Columbia Basin	USFS
Deep Creek CH	USFS
East Blue Jacket	USFS
Gravel Creek	USFS
Haystack Mountain	USFS
Mountain City	USFS
Riffe Creek CH	USFS
Slaughterhouse	USFS
Sunflower Flat	USFS
Timber Gulch	USFS
Van duzer	USFS
White Rock	USFS
White Rock SG	USFS
Wild Horse CH	USFS
Wood Gulch	USFS



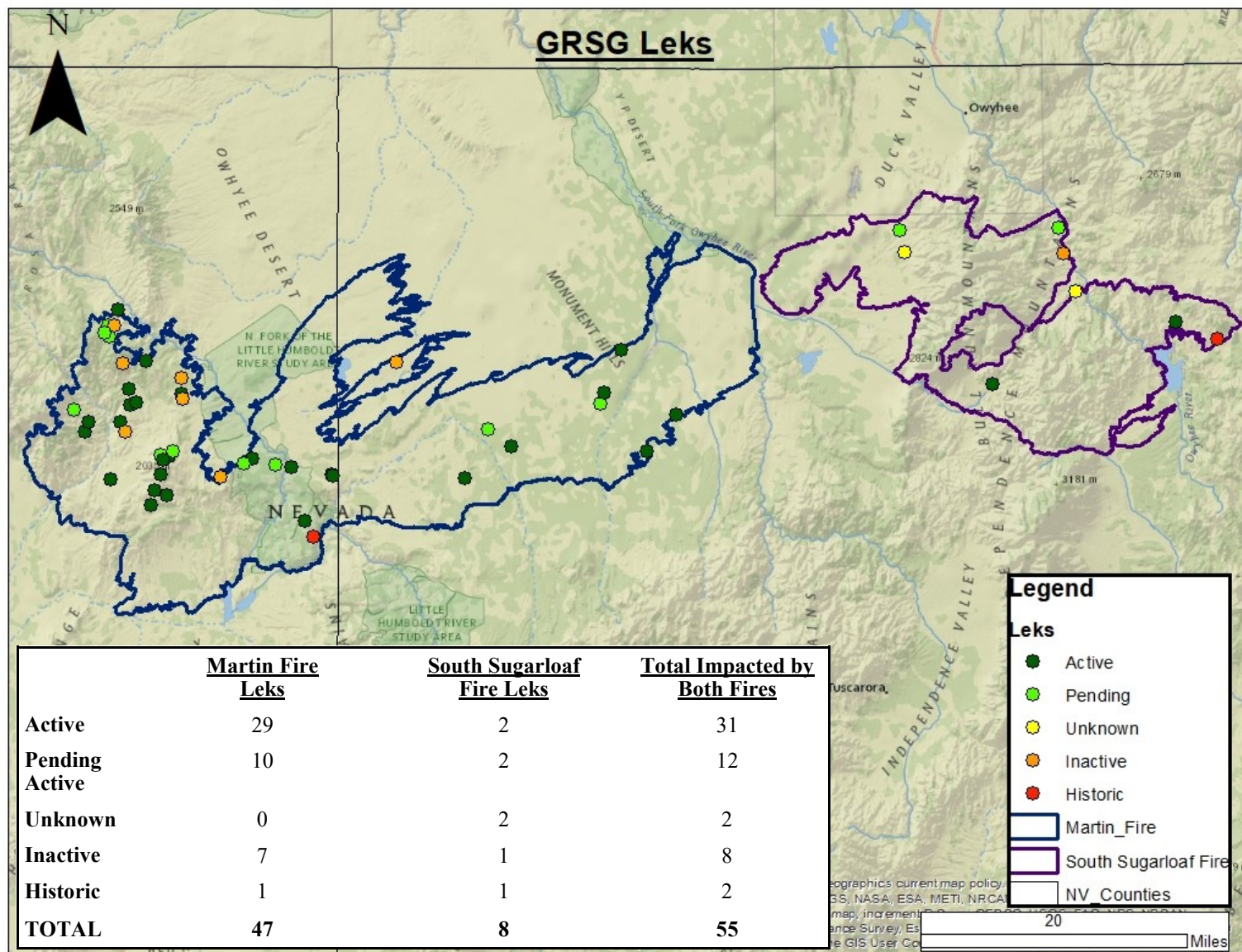
## Nevada Wildfire Update for Sagebrush Ecosystem Council

### Landscape-Scale GRSG Habitat in the Martin Fire and South Sugarloaf Fire Perimeters:



## Nevada Wildfire Update for Sagebrush Ecosystem Council

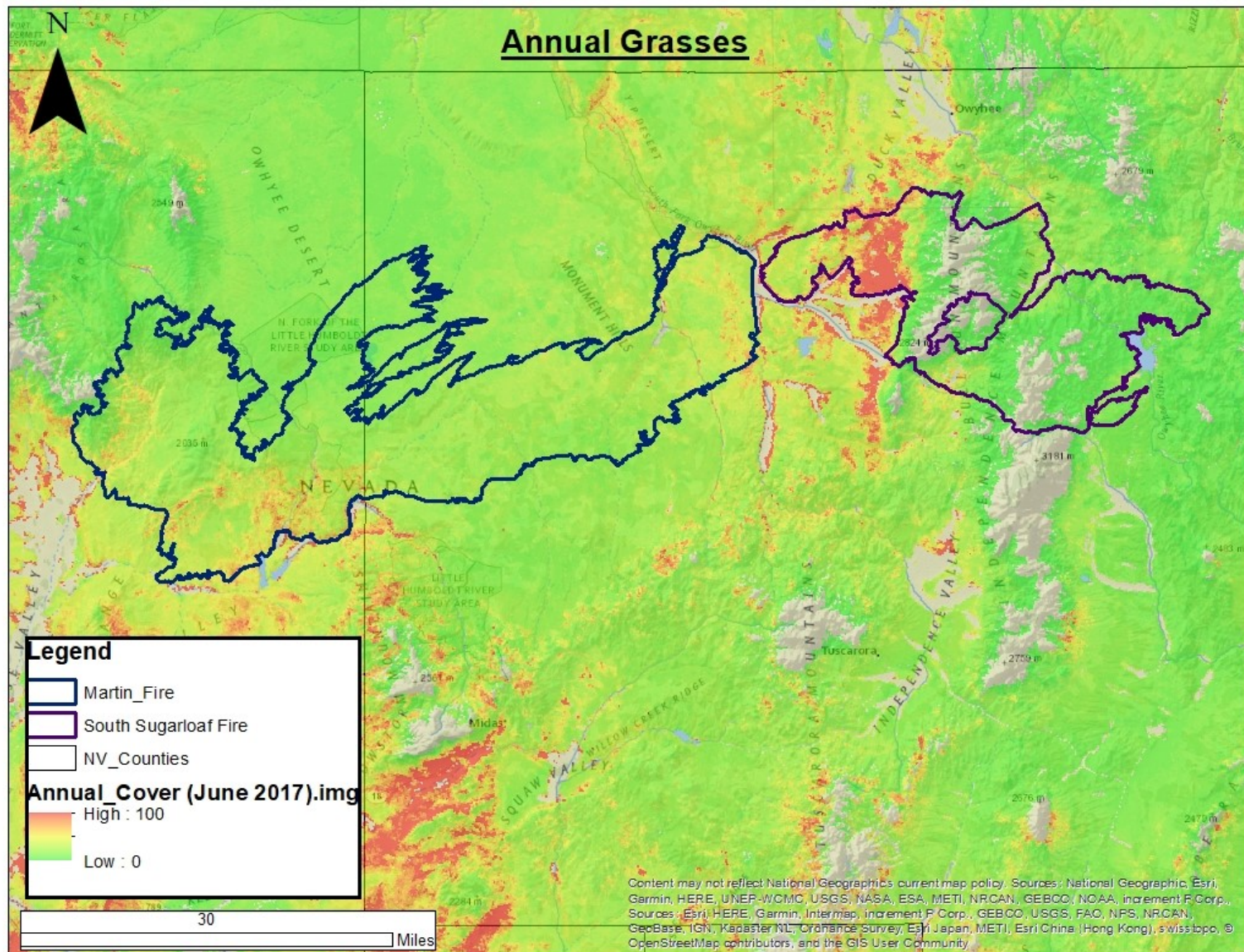
### GRSG Leks in the Martin Fire and South Sugarloaf Fire Perimeters:





## Nevada Wildfire Update for Sagebrush Ecosystem Council

Annual Grass Cover found in June of 2017 within what are now the Martin Fire and South Sugarloaf Fire Perimeters:





## Nevada Wildfire Update for Sagebrush Ecosystem Council

R&R within the Martin Fire and South Sugarloaf Fire Perimeters:

