

Northeastern Nevada

Objectives:

The Northeastern Nevada SG Local Area Working Group facilitates the conservation of healthy ecosystems. The LAWG provides all stakeholders with collaborative opportunities to actively manage and restore greater sage-grouse habitat across ownership boundaries in Elko County.

Goals:

- Develop and implement site-specific plans to accomplish enhancement and restoration projects that are identified by the Sagebrush Ecosystem Program as important areas for sage-grouse conservation.
- Identify potential habitat enhancement and restoration projects.
- Provide local, site-specific expertise on a variety of issues.

Upcoming Events:

- Sage Grouse Experience April 2019.
- LAWG meeting TBD October 2018

Gerry Miller
911 Falcon Lane
775-461-6569

Service Area



Significant Achievements

Sagebrush Demonstration Plots
Established in 2001
Data collected in 2006, 2011 and
2016 and the studies are on-
going.

Elko County Sagebrush
Ecosystem Conservation Strategy
Finished in 2005, Approved by the
County in 2007
Beneficial because of ecosystem
approach

Tuscarora Population
Management Unit Assessment
completed in 2009.

North Fork Population
Management Unit Assessment
completed in 2011.

Categorize sage grouse habitat
based on ecological site
descriptions using landowner
questionnaires for future projects

Sage Grouse Experience is in its
7th year and on-going.



Activities To Date



Sagebrush Demonstration Plots

Established in 2001
Data collected in 2006,
2011 and 2016 and the
studies are on-going.

Sagebrush island establishment innovation

- Carrying on Kent
McAdoo's work

Conservation Credit System Assistance

Continue working with
4-H and FFA on projects
benefitting Greater Sage
Grouse

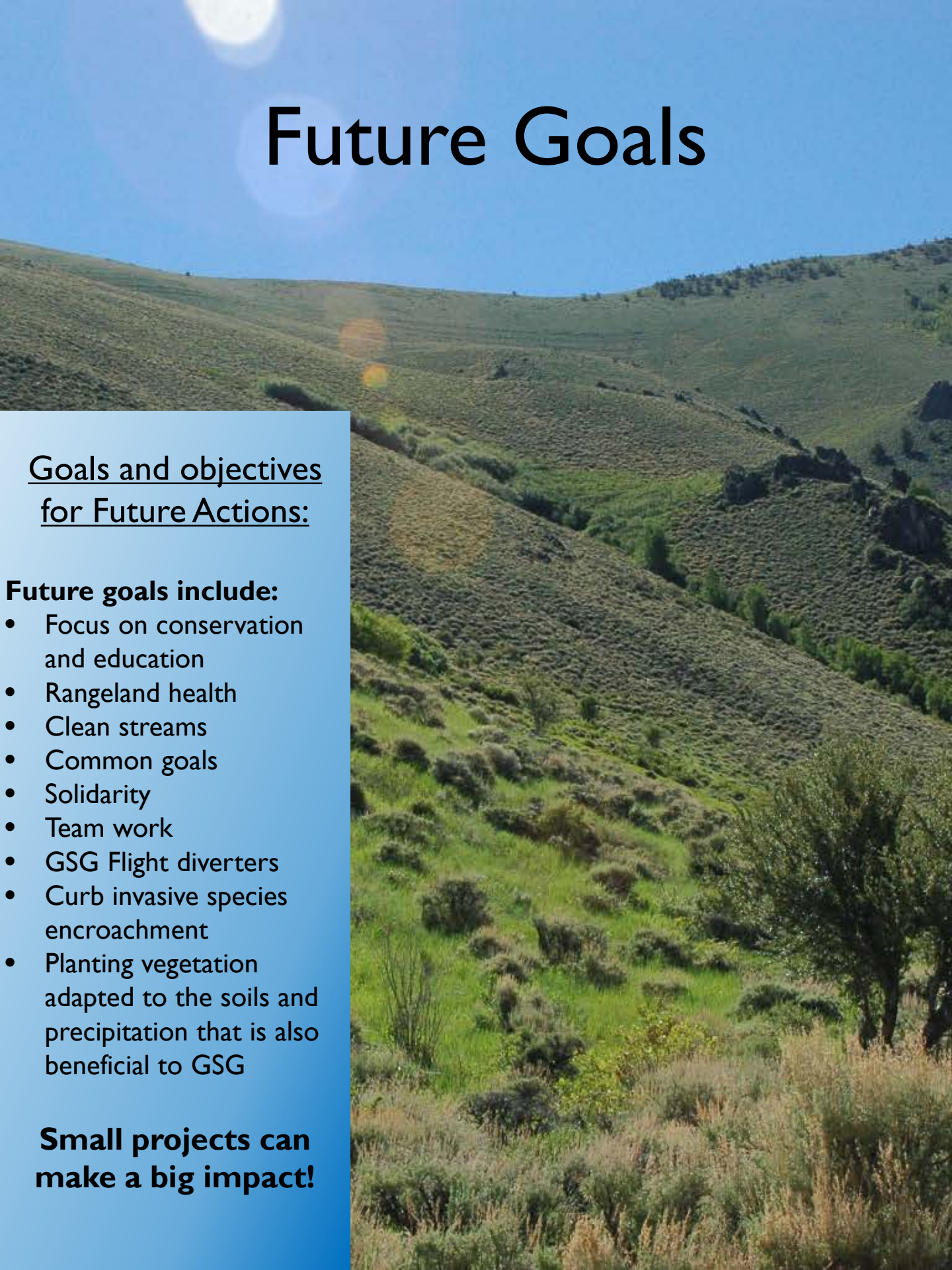
Future Goals

Goals and objectives for Future Actions:

Future goals include:

- Focus on conservation and education
- Rangeland health
- Clean streams
- Common goals
- Solidarity
- Team work
- GSG Flight diverters
- Curb invasive species encroachment
- Planting vegetation adapted to the soils and precipitation that is also beneficial to GSG

**Small projects can
make a big impact!**



Resource Needs

None identified currently.

- Native seeds from our region in a quantity that can be used for restoration purposes.

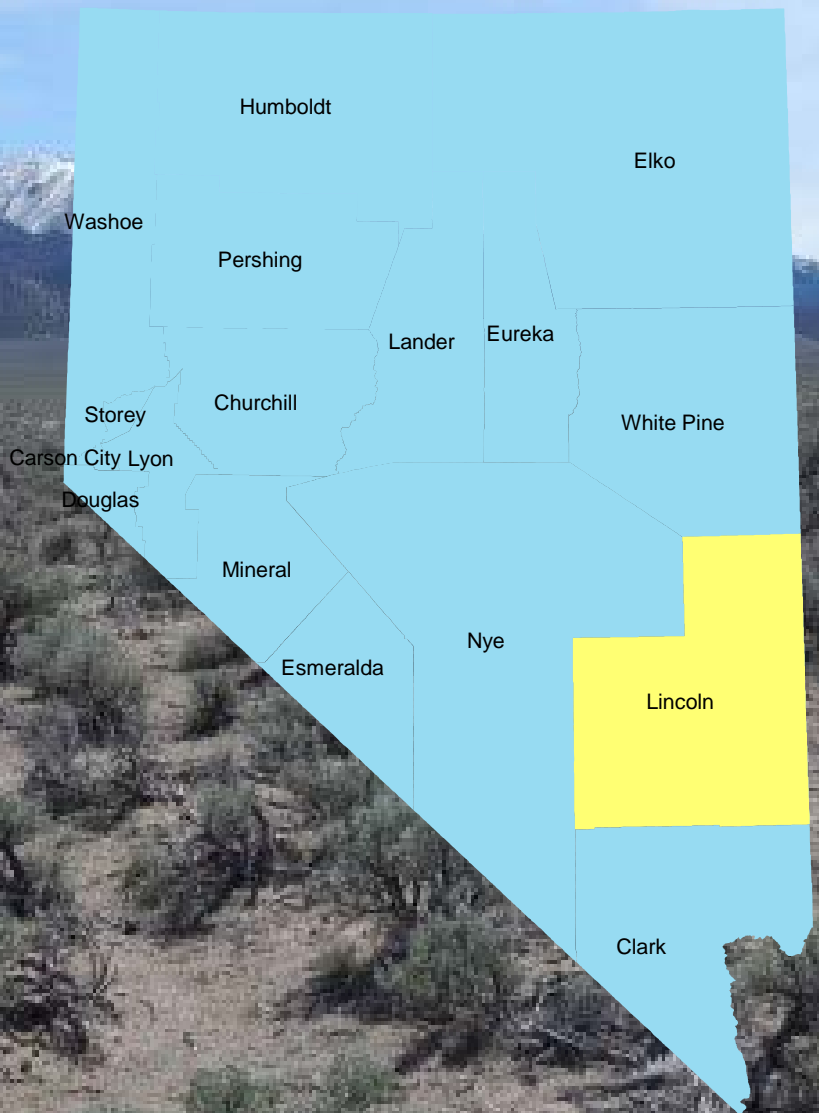


Lincoln LAWVG

Mission Statement

Working together in partnership to improve habitat across all landownership within Lincoln County.

Service Area



Upcoming Events:

- Coordination with Intermountain West Joint Venture
- Fall meeting
- Spring field trip to visit project sites

Primary Contact:

Lincoln County Conservation District

PO Box 445, Caliente, NV 89008

775-726-3101 x102

Significant Achievements

Continuous meetings as a LAWG since 2001

2003 through 2011:

Advocated for habitat conservation over wind generation project at Table Mountain, Lincoln County

2014:

A work day marking fences in Cave Valley

2016:

Completed Plan Addendum to the 2004 Lincoln County Sage-Grouse Conservation Plan

2003- Present:

9 water developments

Predator Control

3,985 ac Fire Rehab

3,545 acres Chemical Control 10,569 acres Conifer Removal

5,059 acres Manual Conifer Removal

13,197 Mechanical Treatments

6,400 Mixture of Mechanical and Manual Treatments

Sage-Grouse Research

Represents acreage across the county, both private and public land, of habitat rehabilitation.

Activities To Date

Wilson Creek Bench Complex – Public and Private Lands

- Chaining
- Seeding
- Hand cutting
- Chipping
- Weed control
- Beaver dam analogs / wet meadow rehabilitation

Trial BDA's in Wilson Creek



Cut PJ (left), chipped biomass (right)



Future Goals

- Improve seasonal habitat connectivity
- Raven control
- Riparian and meadow rehabilitation
- Coordination across Utah / Nevada state line for fire and fuels management
- Rehabilitation of sagebrush communities where Pinyon-Juniper has become established
 - Mastication
 - Prescribed burns
 - Chipping
 - Mowing
 - Seeding
 - Chaining



Regrowth after PJ treatment



Regrowth after chipping



Obstacles to Success

Continued habitat degradation by wild horses

Barriers that inhibit successful coordination of funding from multiple sources

- Translating available funding to on-the-ground projects is difficult
- Funding source timing restraints
- Match requirements
- Limited project management capacity
- Project approval timelines



07/25/

North Central LAWG

Purpose

- For all to agree and have common ground on the LAWG goals and priorities
- To have a good understanding of federal requirements, decisions, and policy
- To assume a higher voice that is one of equal influence
- To develop connections and consistency between local, state, and federal programs and communications
- From this foundation of being more informed and involved, work in partnership to reduce and ameliorate the loss and/or significant decline of the critical habitat needed to sustain robust sage-grouse populations

Scope

A map including Priority Habitat Management Areas (PHMA); grazing allotments; Black Rock, Pine Forest, Jackson, Lone Mountain, Santa Rosa, Sonoma, and Massacre PMUs and the overlap of these polygons will help to define the highest priority areas to focus our attention and work.

Contact:

Bettina Scherer

bscherer@dcnr.nv.gov

775-684-2717

Service Area



LAWG Meets at the Humboldt County Cooperative Extension Office in Winnemucca, NV

Upcoming Events:
Rock Wall Project
Winter Meeting 2019

Significant Achievements

2002-2010

Completed PMU risk assessments in planning area

2016-2017

Created Ranking Criteria and Project Selection within coverage area



Activities To Date

Reviewed PMU
Assessments to
determine if risks ID-Ed
were still relevant

Project Review and
Ranking

Dooley Field Range
Improvement 2016-2017

House Spring Fence
Marking

1 Mile fence removal in
Mullinix

6 miles of fence marking
within Santa Rosa District

Working with Jordan
Meadows Collaborative

Post-Fire Rehab



Rehabilitation Activities/Fence Marking



Future Goals

Reviewed and Ranked 6
Projects

Rangeland Improvement
Projects:

- Tin Trough
- Summit
- West Side Spring
- Noxious Weed
Treatment- Paradise Valley

Post Fire Efforts:

- Martin Fire
- Quinn Fire
- Greg Fire

5-6 ESR Plans in process in
Winnemucca District

Beaver Dam Analog Project
in process

Working with USFS and ARS
on experimental plots

Rock Wall Project

Medusahead Mapping
Research UNR, NDOW,
USFS

Continued Post-Fire Rehab



Continued Rehabilitation Activities/ Fence
Marking



Resource Needs

- Facilitator
- Project Manager
- Shortened Implementation Timelines
- Consistency in Agency Approach to NEPA
- Availability of time from LAWG members
- Dedicated Funding and People

