



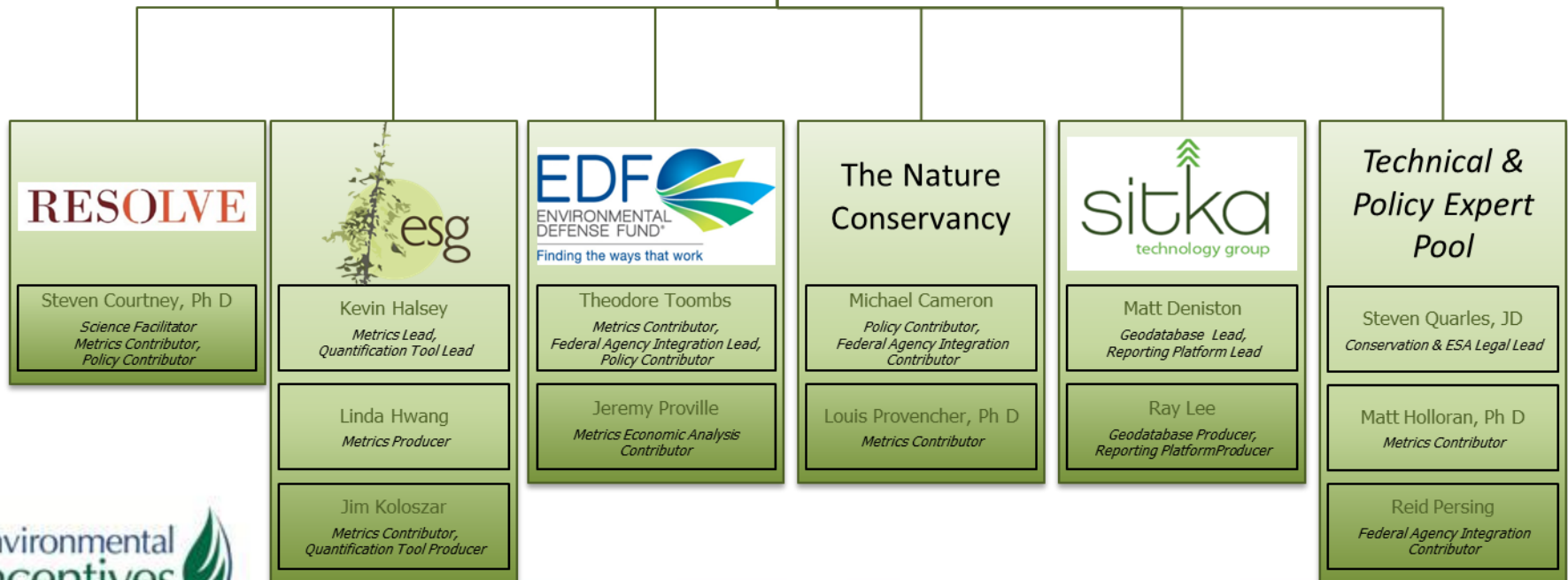
# Nevada Sage-Grouse Conservation Credit System

**SEC Meeting**  
*January 8, 2014*

# Today's Objectives

- 1) Introduce team
- 2) Understand EI's approach
- 3) Understand work plan
- 4) Define SEC engagement

# Team



# CREDIT SYSTEM FEATURES

# Habitat Quantification

Quantification Approach, Calculator and Monitoring

## Management Practices to Improve Habitat



Pre-Project	Acres	Quality	Functional Acres
Site	20	X 0%	= 0
	80	X 50%	= 40
Landscape	n/a	100%	40

Post-Project	Acres	Quality	Functional Acres
Site	100	X 100%	= 100
Landscape	n/a	100%	100

**Total Uplift: 60 functional acres**

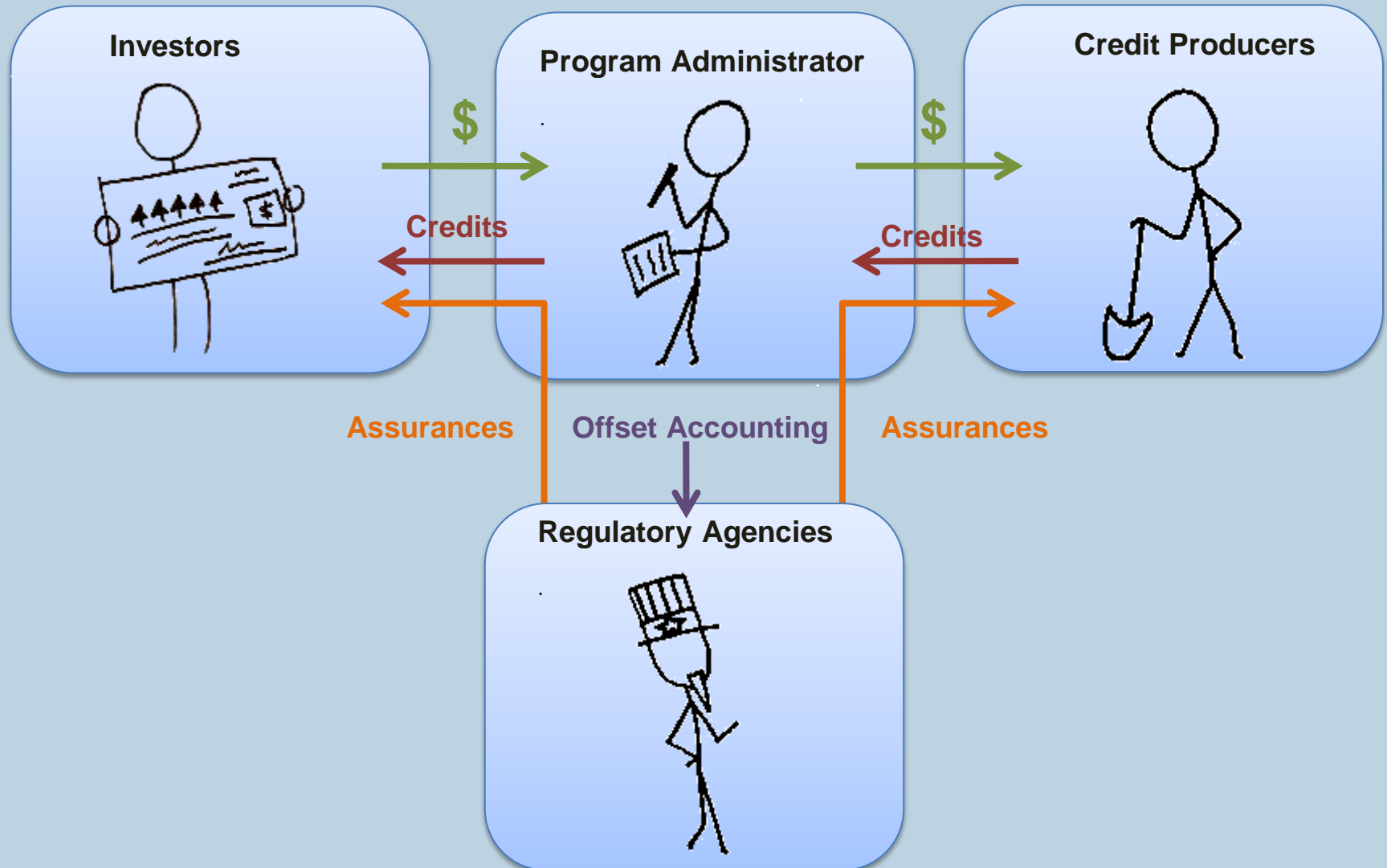
# Credit Production, Acquisition & Governance

Policy, Procedures and Forms



# Credit Production, Acquisition & Governance

Policy, Procedures and Forms



# Ensuring Net Benefit & Comparison to Conservation Banking

## Combination of factors ensure Net Benefit

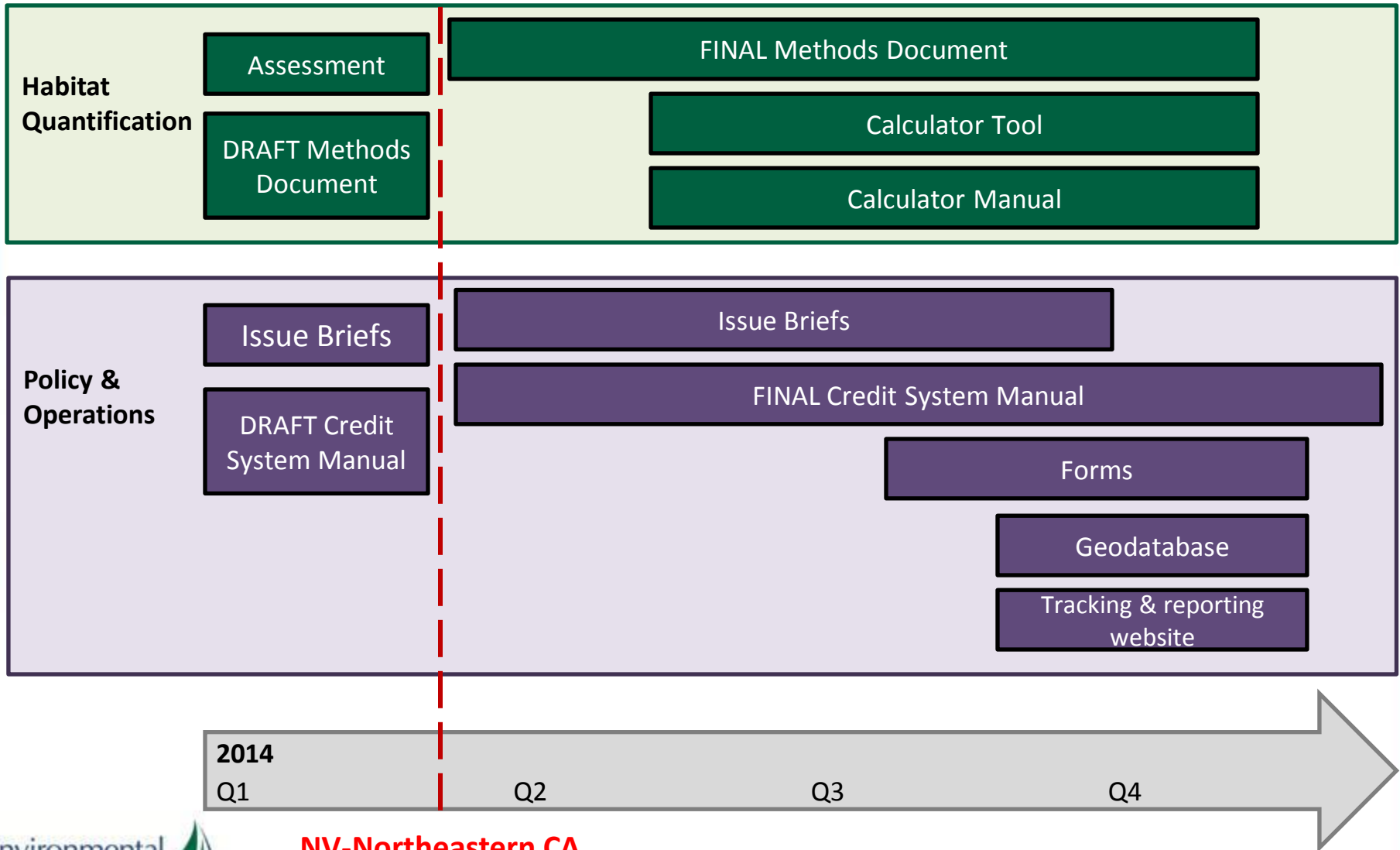
- Mitigation Ratios
- Outcome-Based Quantification & Performance-Based Credit Release
- Verification with Performance & Financial Assurances
- Reserve Account

## Innovations to Conservation Banking Model

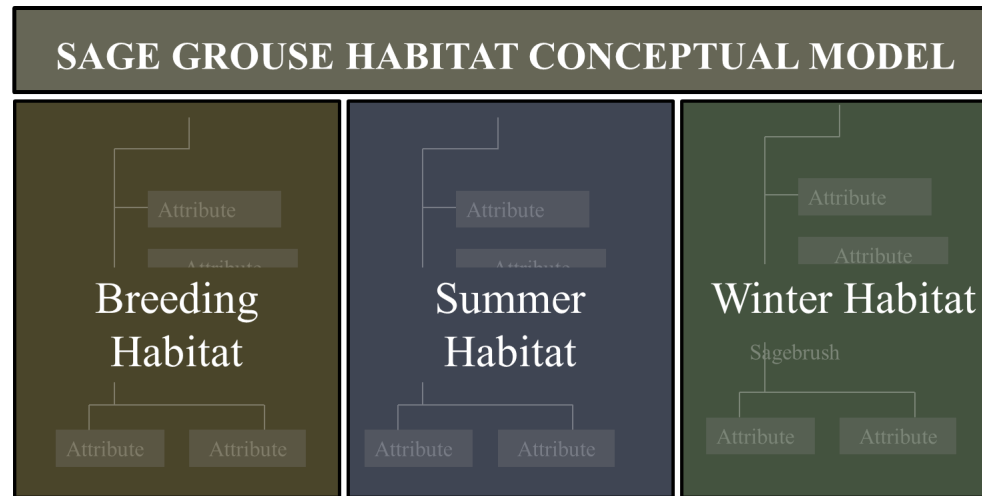
- Establishing a Programmatic Approach
- Accounting for Functional-Acres
- Use of a Programmatic Reserve

# CREDIT SYSTEM DEVELOPMENT

# Development Timeline



# Habitat Quantification



## Products

- a) Methods document
- b) Calculator tool
- c) Calculator manual

## Purpose

Describe, explain and operationalize approach to quantifying changes to habitat (credits & debits)

## Users

Investors, credit producers and verifiers

# Policy & Operations



- Products**
- a) Operations manual,
  - b) Forms
  - c) Tracking and reporting tool

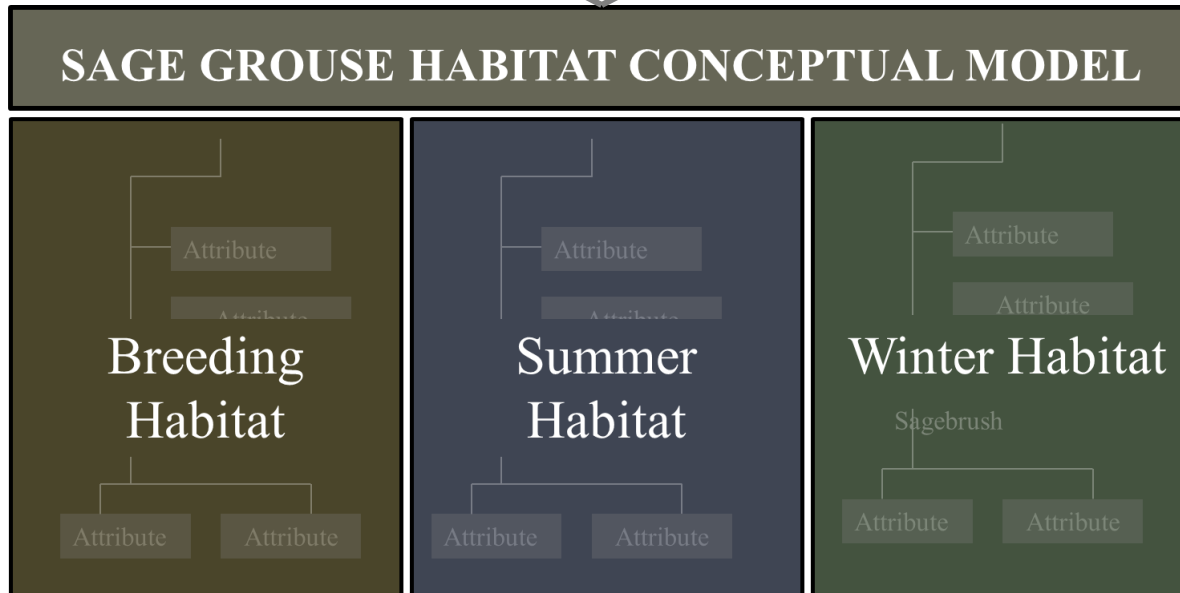
---

**Purpose** Describe policy and process steps for generating, verifying, tracking and exchanging credits and debits

---

**Users** Administrators, investors, credit producers, verifiers, and technical support

# Conservation Credit System



# Assessment Overview

**Purpose** - Facilitate use of the best available approaches in quantification tool.

## Audience

- **Science stakeholders** to gain input
- **Project team** to develop quantification tool

# Issue Briefs

Short factsheets that succinctly define issues, present program design options to decision-makers, and document rationale for recommendations integrated into the Credit System Manual.

- Baseline
- **Credit Release**
- Organizational Structure & Roles
- Participant Confidentiality
- **Performance & Financial Assurances**
- Project Life/Contract Duration
- **Reserve Account**
- Restoration vs. Preservation
- **Service Areas**
- Project & Site Eligibility
- **Tiered Mitigation & Net Benefit Ratios**
- Stacking
- Verification

# SEC INPUT

# SEC Input

- January discussions or February drafts?
- Will SETT be the administrator, and SEC oversight committee?
- Buyer-seller direct transaction, or administrator aggregation?

# Habitat Quantification Work Plan

## SAGE GROUSE HABITAT CONCEPTUAL MODEL



Product	Development Period	SEC Input Period
Assessment	January	<i>None</i>
Conceptual Model	January	Late January (?)
DRAFT Methods Document	February	Late February
Final Methods Document	March – October	<i>TBD</i>
Calculator	April – October	<i>TBD</i>
User Guide	April – October	<i>TBD</i>

# Policy & Operations Work Plan



Product	Development Period	Input Period
<b>PRIORITY Issue Briefs</b>	January – February	Late January (?)
<b>DRAFT System Manual</b>	January – February	<b>Late February</b>
<b>Additional Issue Briefs</b>	March – November	<i>TBD</i>
<b>Final System Manual</b>	March – December	<i>TBD</i>
<b>Forms</b>	August – November	<i>TBD</i>
<b>Geodatabase &amp; Reporting Website</b>	September - November	<i>TBD</i>

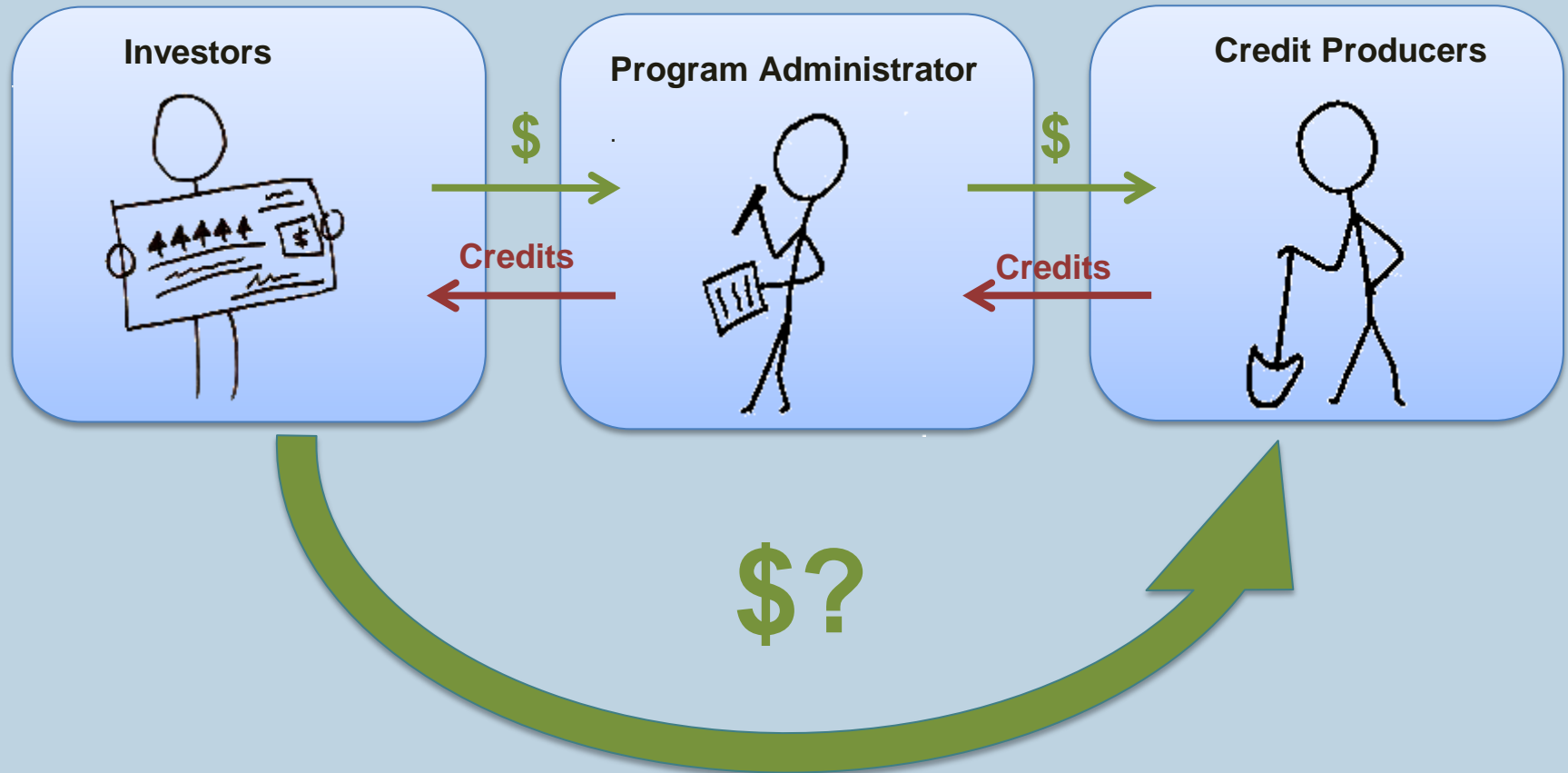
# Credit Production, Acquisition & Governance

Policy, Procedures and Forms



# Credit Production, Acquisition & Governance

Policy, Procedures and Forms



# Organizational Design

