

**Nevada and Northeastern California
Greater Sage-Grouse
Land Use Plan Amendments
Draft Environmental Impact Statement**

BLM - Forest Service
Sage-Grouse Planning Strategy

**Sagebrush Ecosystem Council Update
July 30, 2013**

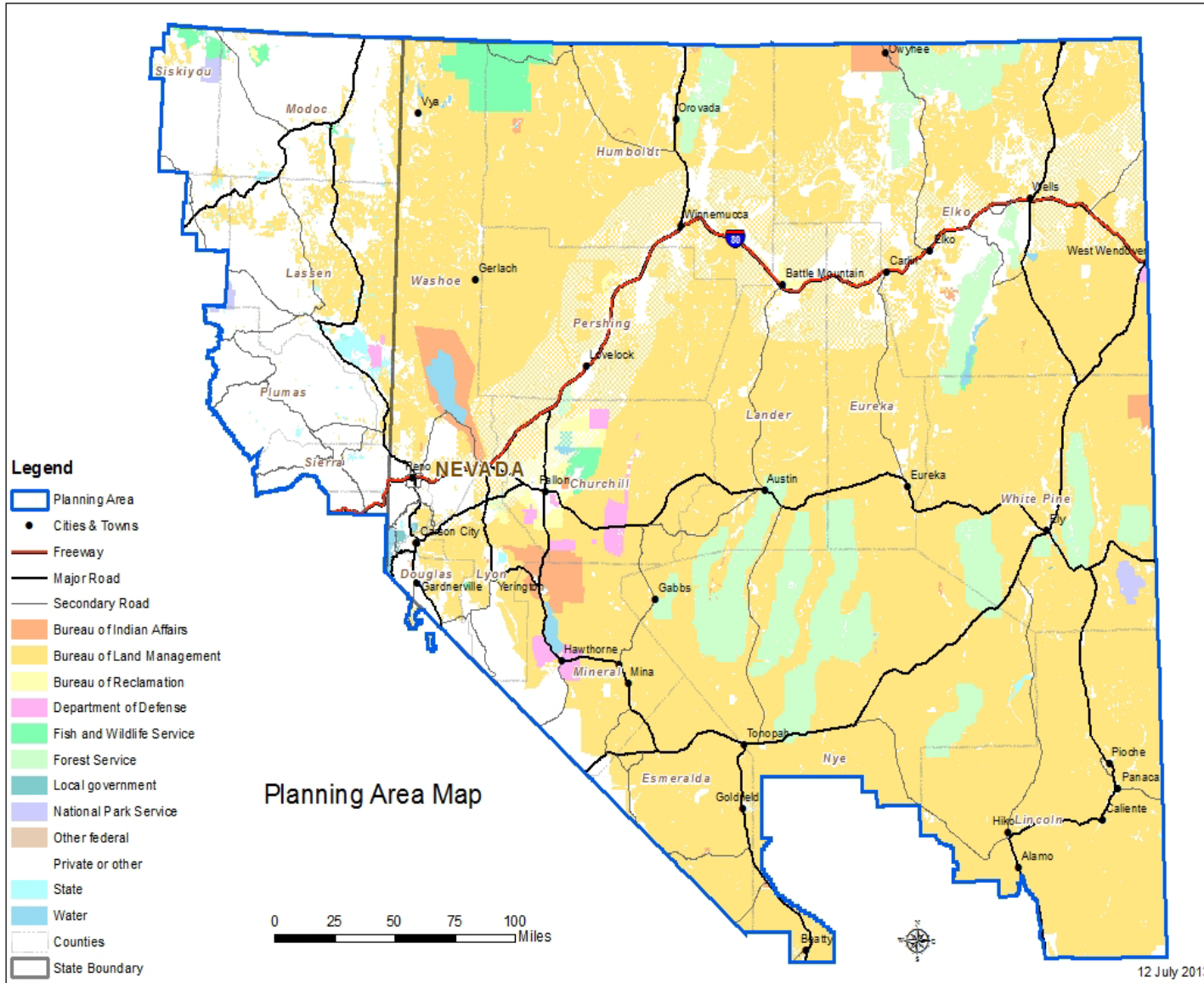


Presentation Objectives

- **Update regarding the status of the Land Use Plan Amendment and EIS**
- **Provide information regarding the ‘range of actions’ being considered in the EIS**



Planning Area



Summary of Planning History

- **Notice of Intent Issued December 2011**
- **BLM/FS identified Priority and General Habitat based on Nevada Department of Wildlife categorization-March 2012**
- **Scoping Summary Document Issued May 2012**
- **Cooperating Agencies Sign MOU**
 - **Federal- 5 Agencies**
 - **State Agencies-Nevada-3/California 1**
 - **Counties-Nevada-9/California-2**
 - **Four Tribal Governments**

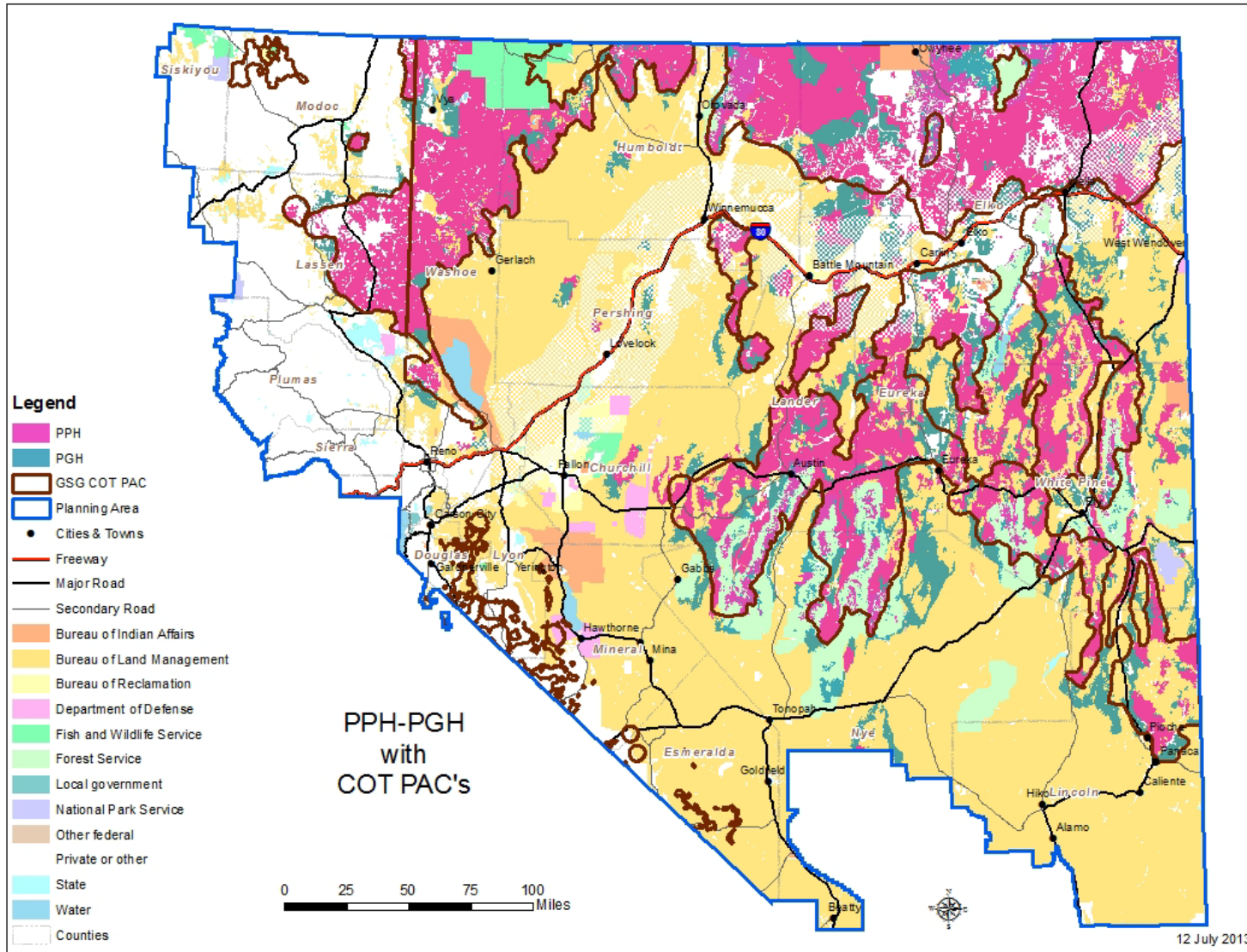


Planning History (Continued)

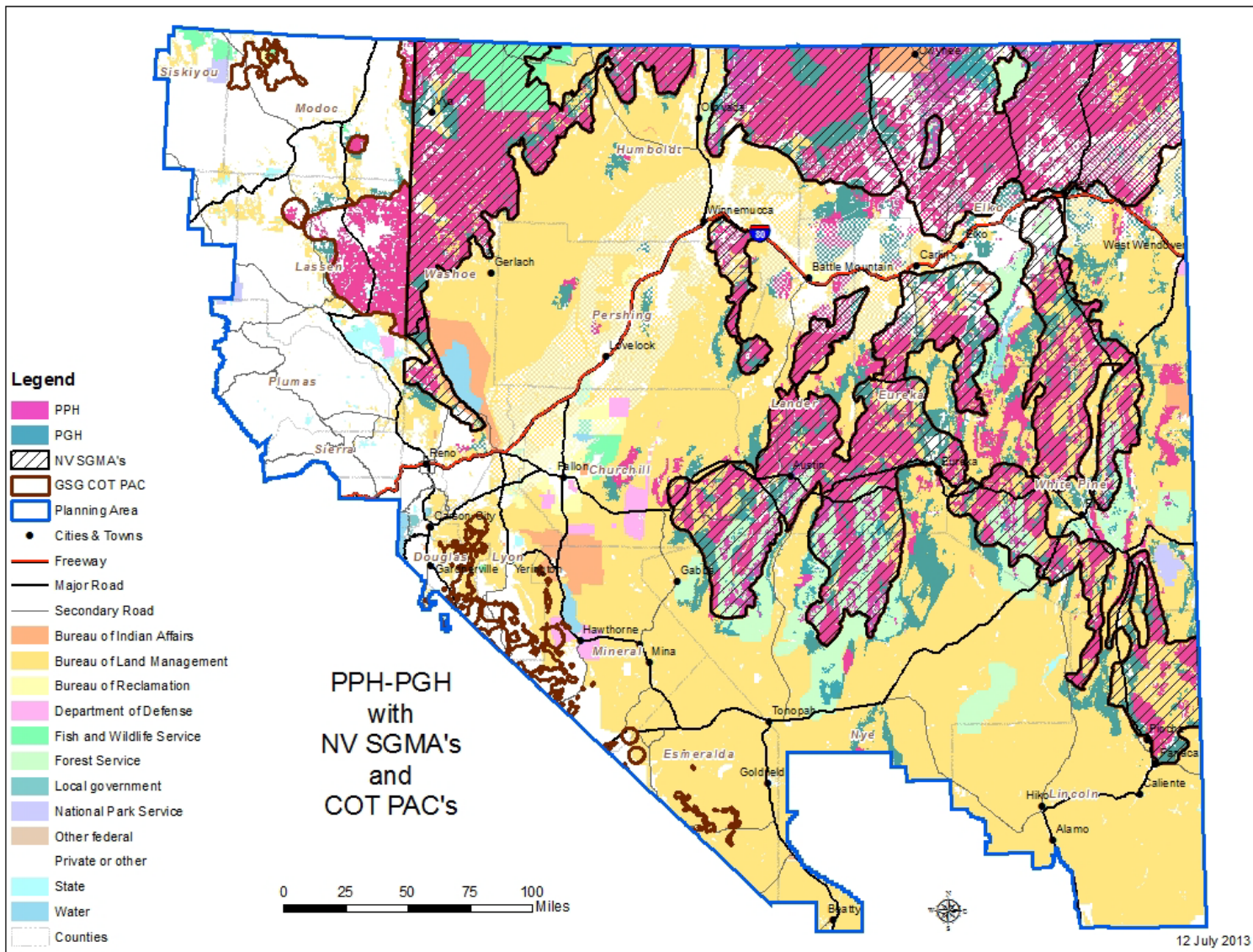
- **Cooperating Agencies Review BLM/FS Alternative - March 2013**
- **Cooperating Agencies Review Administrative Draft - June 2013**
- **Regional IDT recommended submitting ADEIS to WO - July 15, 2013**
- **Regional Management Team reviewed EIS and recommended submittal to WO – July 22, 2013**
- **ADEIS at WO for review with comments due to ID Team August 12**



Greater Sage-Grouse Habitat (PPH and PGH)



Greater Sage-Grouse Habitat- State (Occupied, Suitable, Potential and Non-Habitat)



Purpose and Need

- **Purpose and Need**

- To identify and incorporate appropriate conservation measures in Land Use Plans to conserve, enhance, and restore Greater Sage-Grouse habitat by reducing, eliminating, or minimizing threats to that habitat.
- Threats identified in U. S. Fish and Wildlife Service 2010 Findings and their Conservation Objectives Report (COT) 2012



Alternatives

- **Six alternatives including**
 - **Current management (No Action)**
 - **Nevada State Alternative included in the range of alternatives considered in detail**
 - **Two citizen based alternatives**
 - **BLM/Forest Service developed alternative**
 - **Science based alternative**



Threats

Population	% Chance <500 Birds/200 Males in 2107	Isolated/Small Size	Sagebrush Elimination	Agriculture Conversion	Fire	Conifers	Weeds/Annual Grasses	Energy	Mining	Infrastructure	Grazing	Free-Roaming Equids	Recreation Urbanization	Urbanization
Management Zone III														
Northwest Interior (NV)	ND	Y	N	N	Y	N	Y	U	Y	Y	Y	Y	Y	N
Southern Great Basin(NV Portion)	78.0	L	L	L	Y	Y	Y	L	L	Y	Y	Y	Y	N
Quinn Canyon Range (NV)	ND	Y	N	N	Y	Y	Y	N	N	Y	Y	Y	Y	N
Management Zone IV														
Northern Great Basin	99.7	N	L	L	Y	Y	Y	L	L	Y	Y	L	Y	Y
Management Zone V														
Warm Springs Valley (NV)	ND	Y	N	Y	Y	Y	Y	Y	N	Y	Y	Y	Y	Y
Western Great Basin (OR, CA, NV)	99.1	N	L	L	Y	Y	Y	L	L	L	Y	Y	U	N

Threats are characterized as: Y = threat is present and widespread, L = threat present but localized, N = threat is not known to be present and U = unknown.



Range Of Management Actions within Alternatives

- **Habitat Identification (acres)**
 - 12.7 million Priority
 - 5.0 million General
- **Thresholds of Disturbance**
 - Ranges from 5% to 0%
 - “No Unmitigated Loss”
- **Right-of-Way**
 - Exclusion
 - Avoidance
 - Avoidance with Required Design Features (RDF)
- **Leasable Minerals**
 - Closed
 - No Surface Occupancy (NSO)
 - NSO with exceptions
- **Livestock**
 - No Change
 - Additional Grazing Standard
 - All Livestock removed
 - 25% Reduction
- **Travel Management**
 - Designation from Open to Limited
- **Areas of Critical Environmental Concern (ACEC)**
 - No Change to identification of 12.7 million acres
- **Renewable Energy**
 - Exclusion
 - Avoid with mitigation measures



Cooperating Agency Comments

- **Submitted Comments**
 - State of Nevada
 - U.S Fish and Wildlife Service, BLM, and Forest Service
 - Modoc, Washoe, Elko, Churchill and Nye Counties
 - Summit Lake Paiute Tribe
- **Summary of Comments**
 - Edits
 - Requesting Clarification
 - Identifying Contradictions
 - Opinions
 - Requesting Additional Analysis (changes)
- **Additional Analysis**
 - State Alternative (avoid, minimize and mitigate)



Additions to BL/FS Alternative

- Coordination with Nevada Sagebrush Ecosystem Technical Team (Nevada only)
- Nevada Conservation Credit System (Nevada only)
- Implementation of Required Design Features (RFDs) outside mapped PPH/PGH in sage-grouse use areas.
- PGH on boundary of burned PPH will be managed as PPH
- Habitat will be evaluated and adjusted (if necessary) every five years.





Regional IDT Comments

- Provide clarification on application of Management Actions on existing federal highways and state routes.
- Provide a more detail summary of Management Action responding the invasive species (cheat grass).
- Ensure that direction from the National Policy Team regarding Fire, Mitigation, Monitoring, and Adaptive Management are included in the ADEIS.



Questions and Discussion

