

SETT Wildfire Update August 2020

GREAT BASIN COORDINATION CENTER

2020 Year-to-Date Fires and Acres By State & Agency

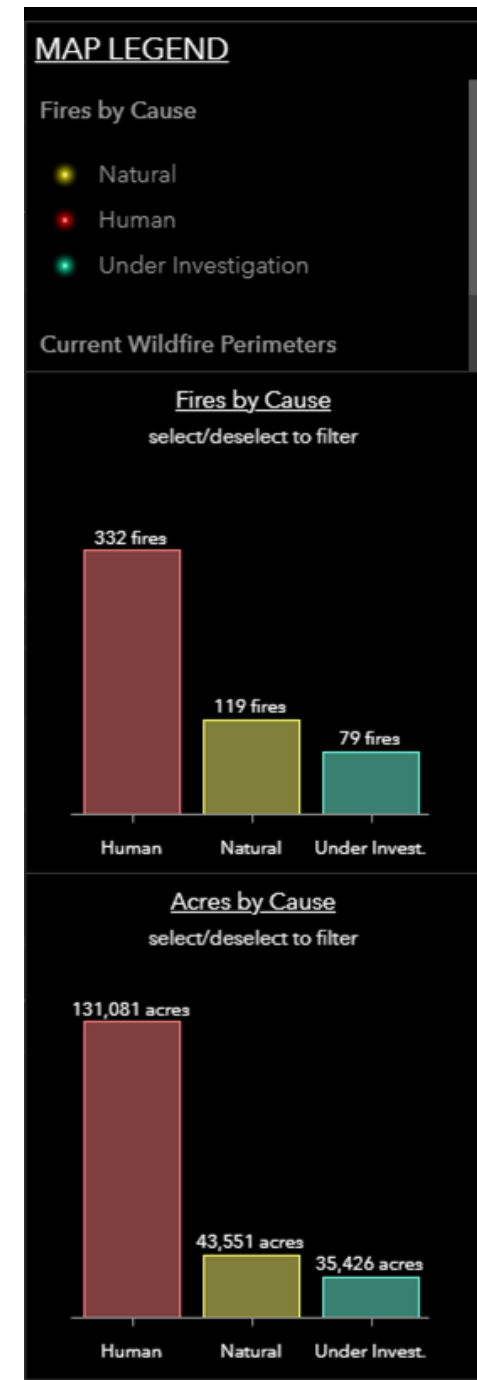
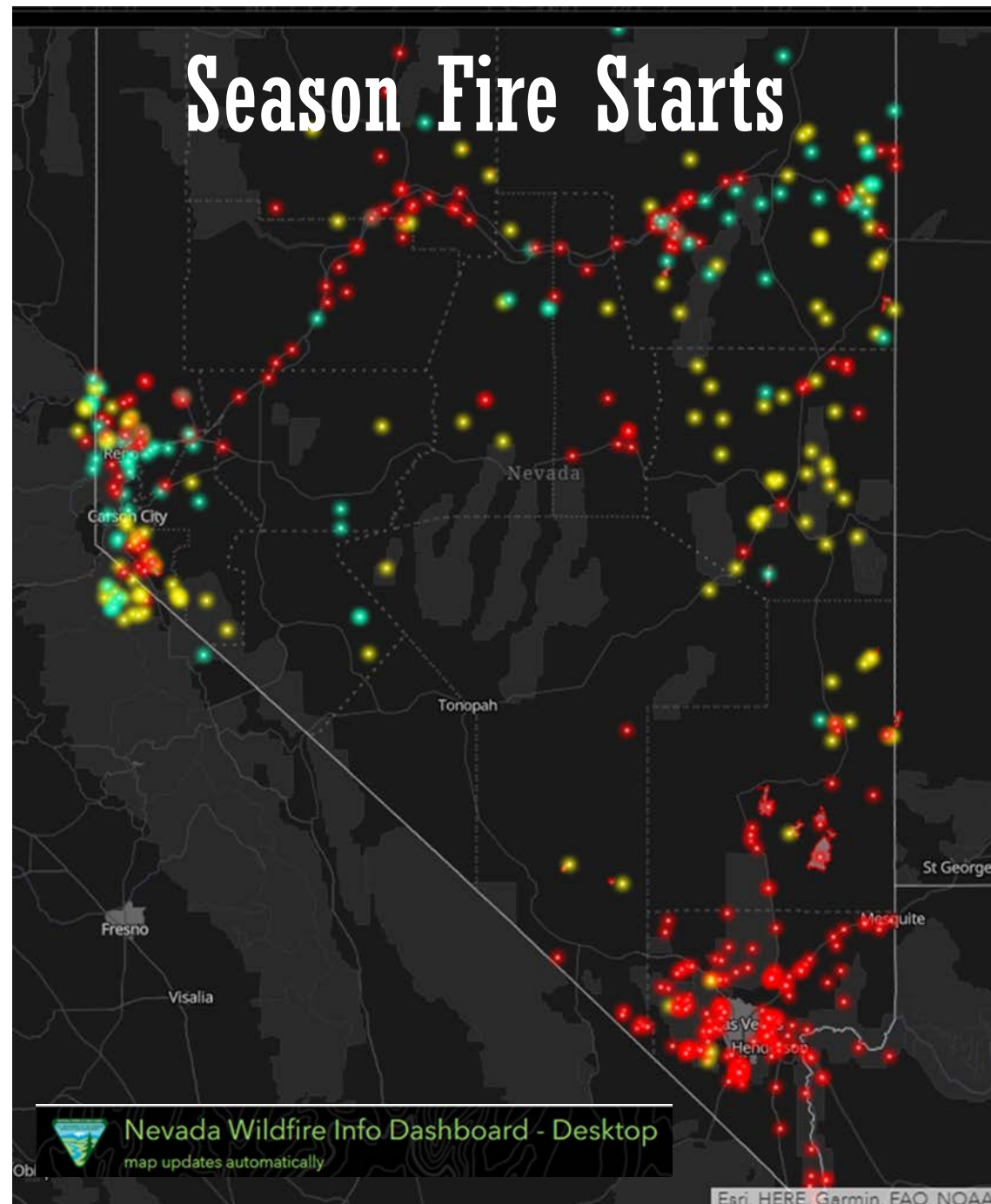
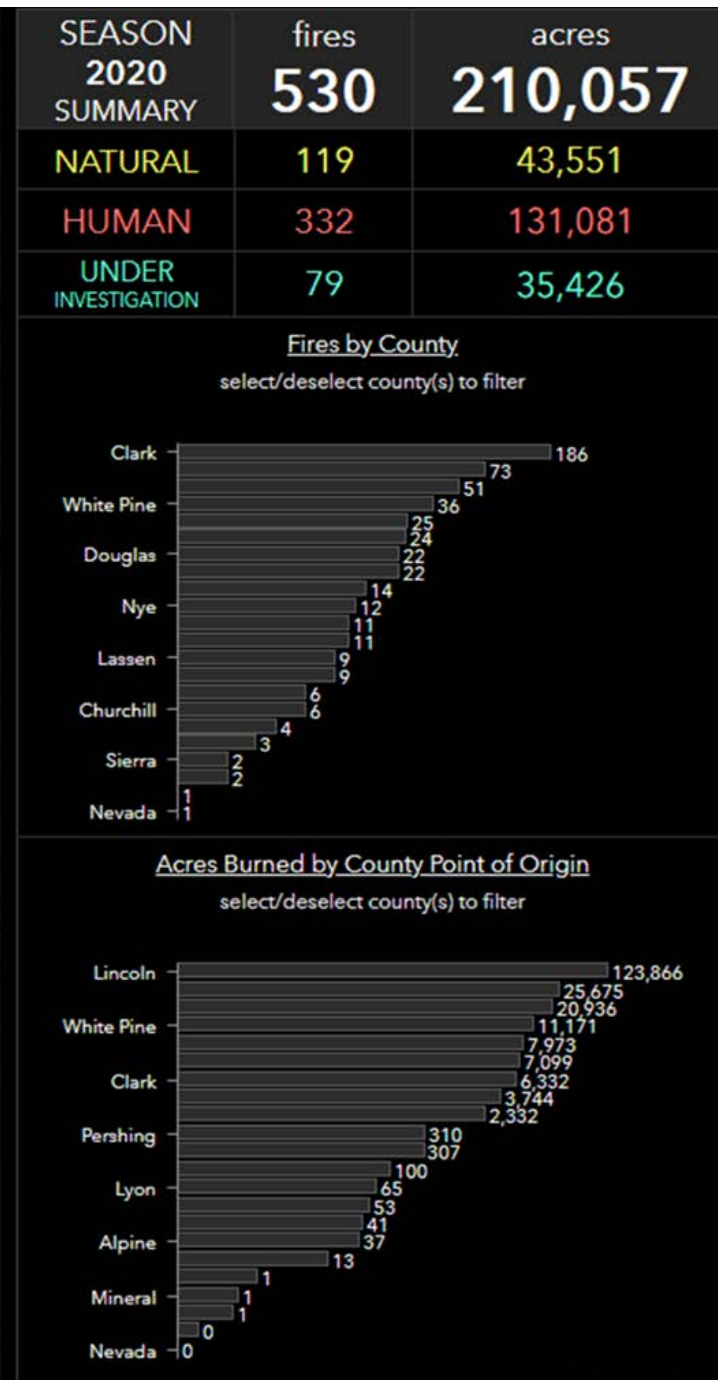
(Fires & Acres reported by land protection via National Interagency Situation Reporting Program)

Updated: 08/11/20
21:10

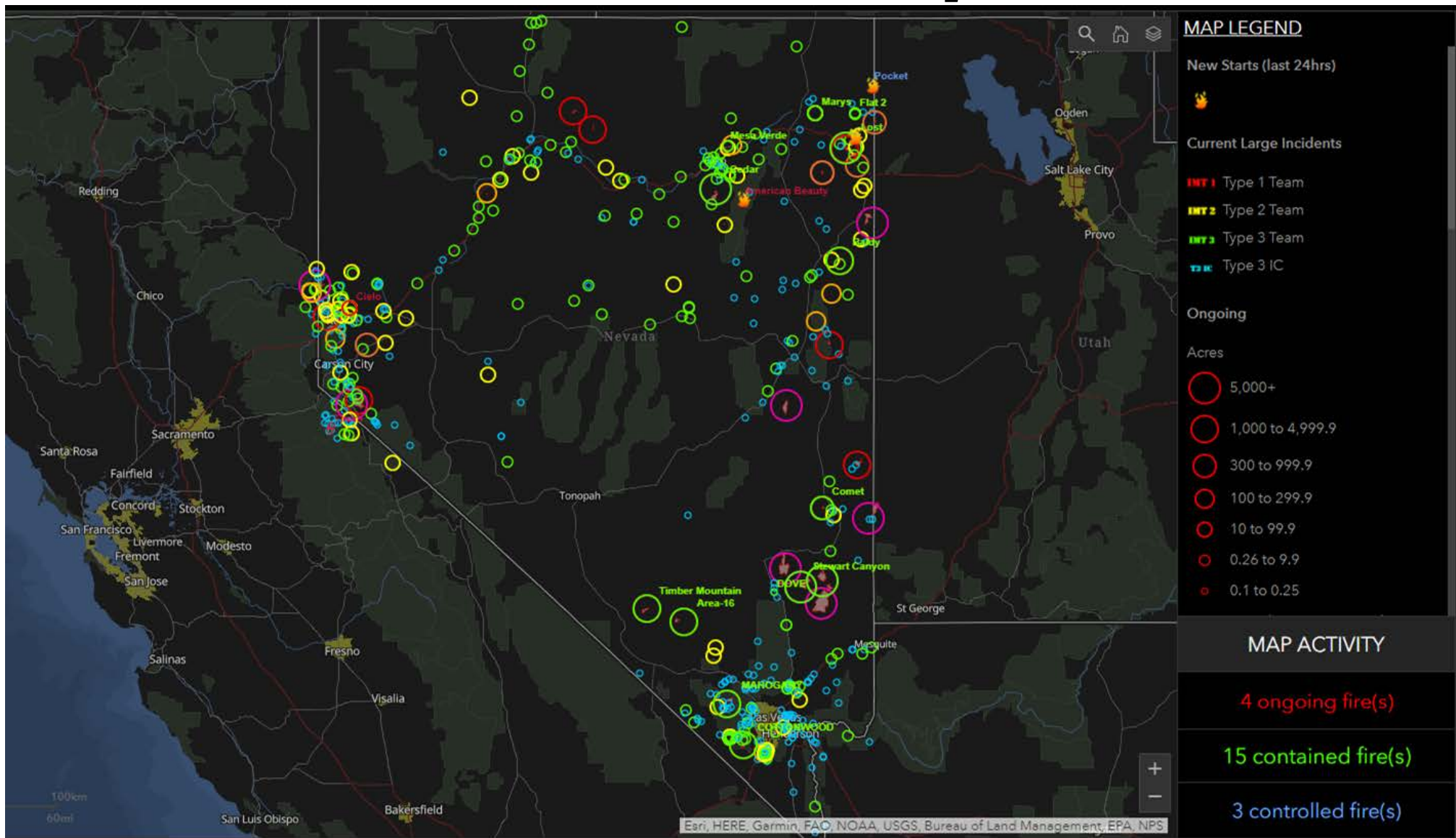
Human Caused Fires	Human Caused Acres	Lightning Caused Fires	Lightning Caused Acres	WILDFIRE TOTALS	
				FIRES	ACRES

NEVADA

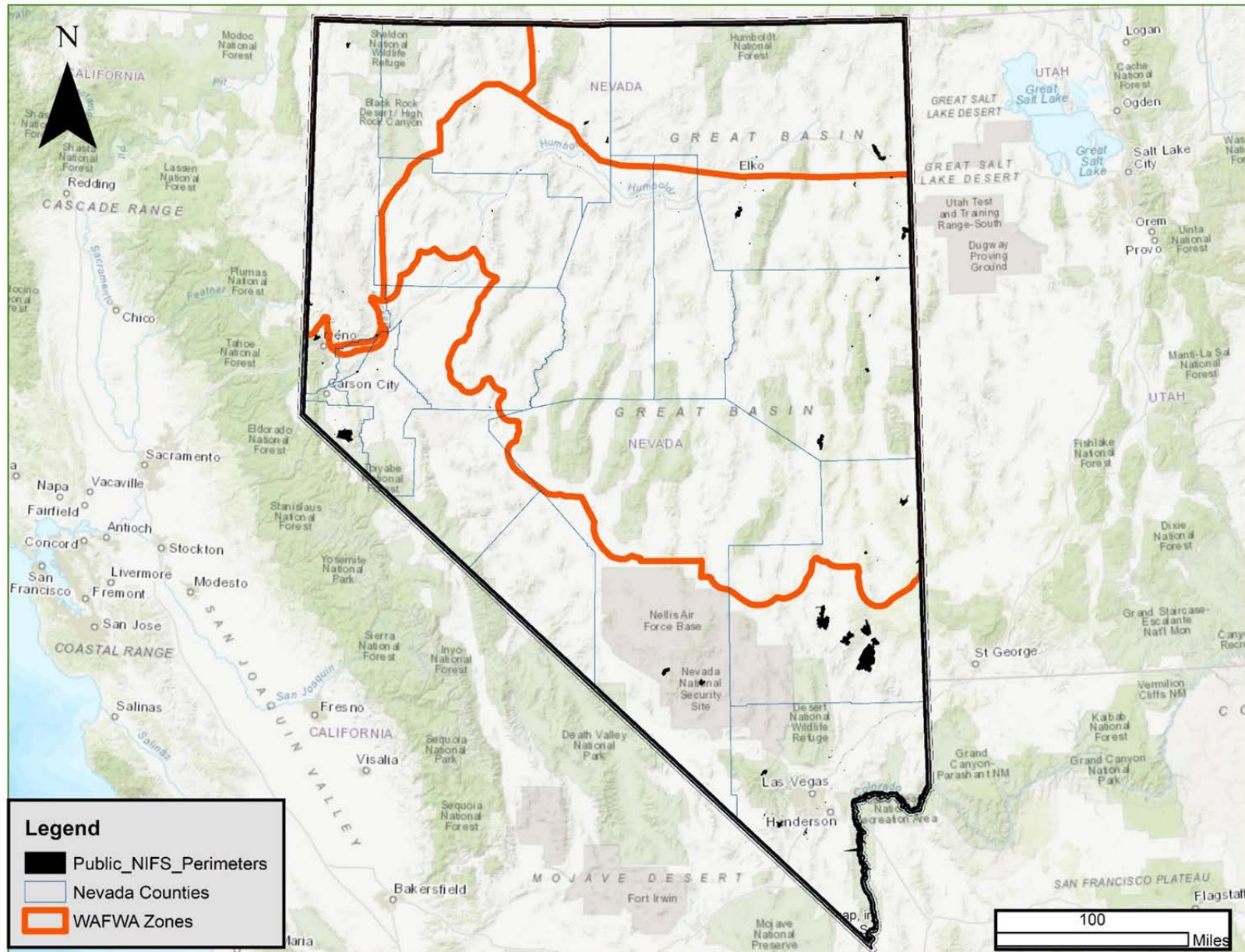
Bureau of Land Management	BLM	214	112,751	82	60,400	296	173,150
Department of Defense	DOD	1	300	0	0	1	300
NV Counties	C&L	94	3,877	20	11,682	114	15,559
U.S. Forest Service	FS	24	6,932	28	2,736	52	9,668
U.S. Fish & Wildlife Service	FWS	17	64	0	0	17	64
National Park Service	NPS	19	1	0	0	19	1
Nevada Division of Forestry	ST	3	0	0	0	3	0
Tribal	Other	0	0	0	0	0	0
		372	123,925	130	74,817	502	198,743



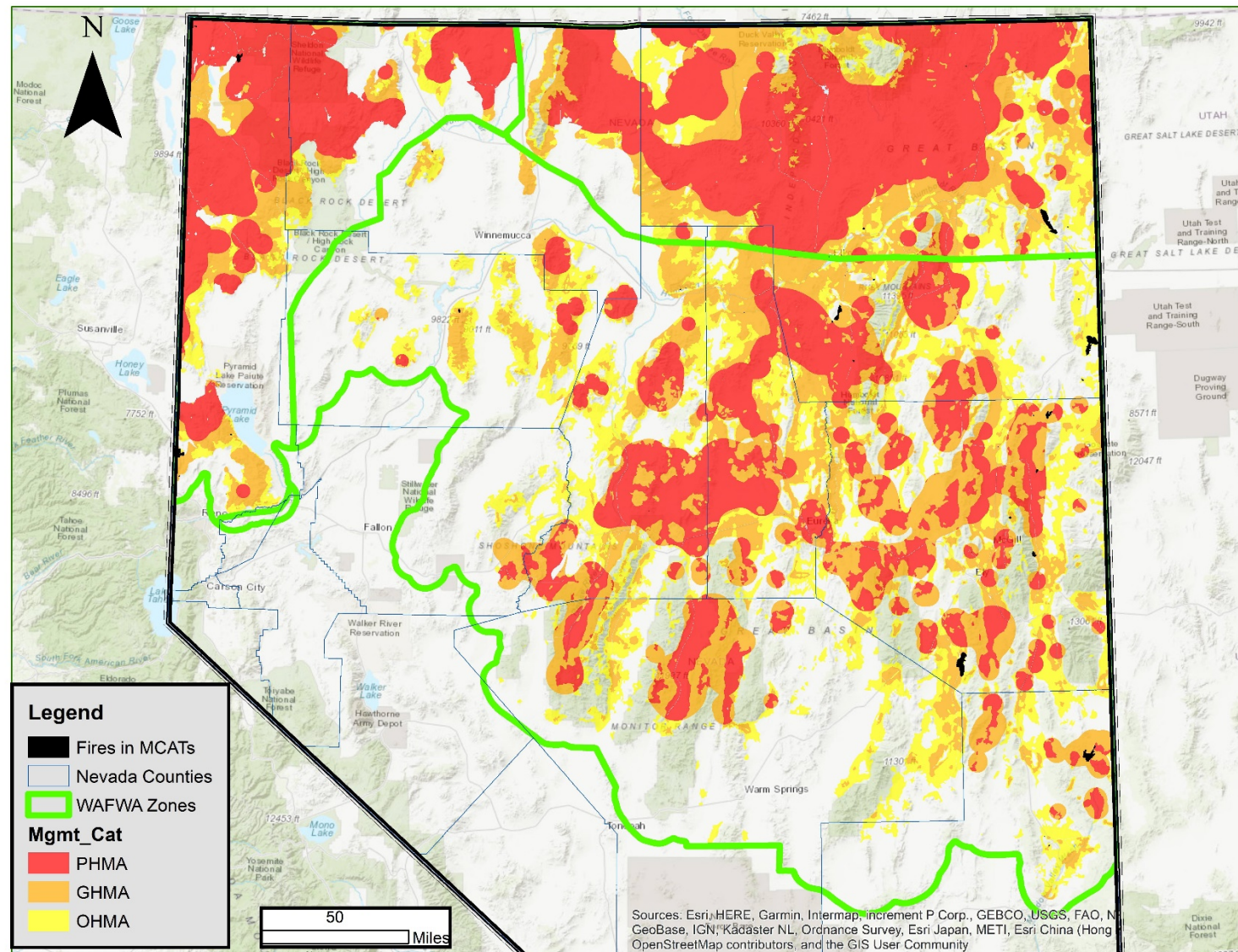
Season Summary



Wildfire Footprints from the Year



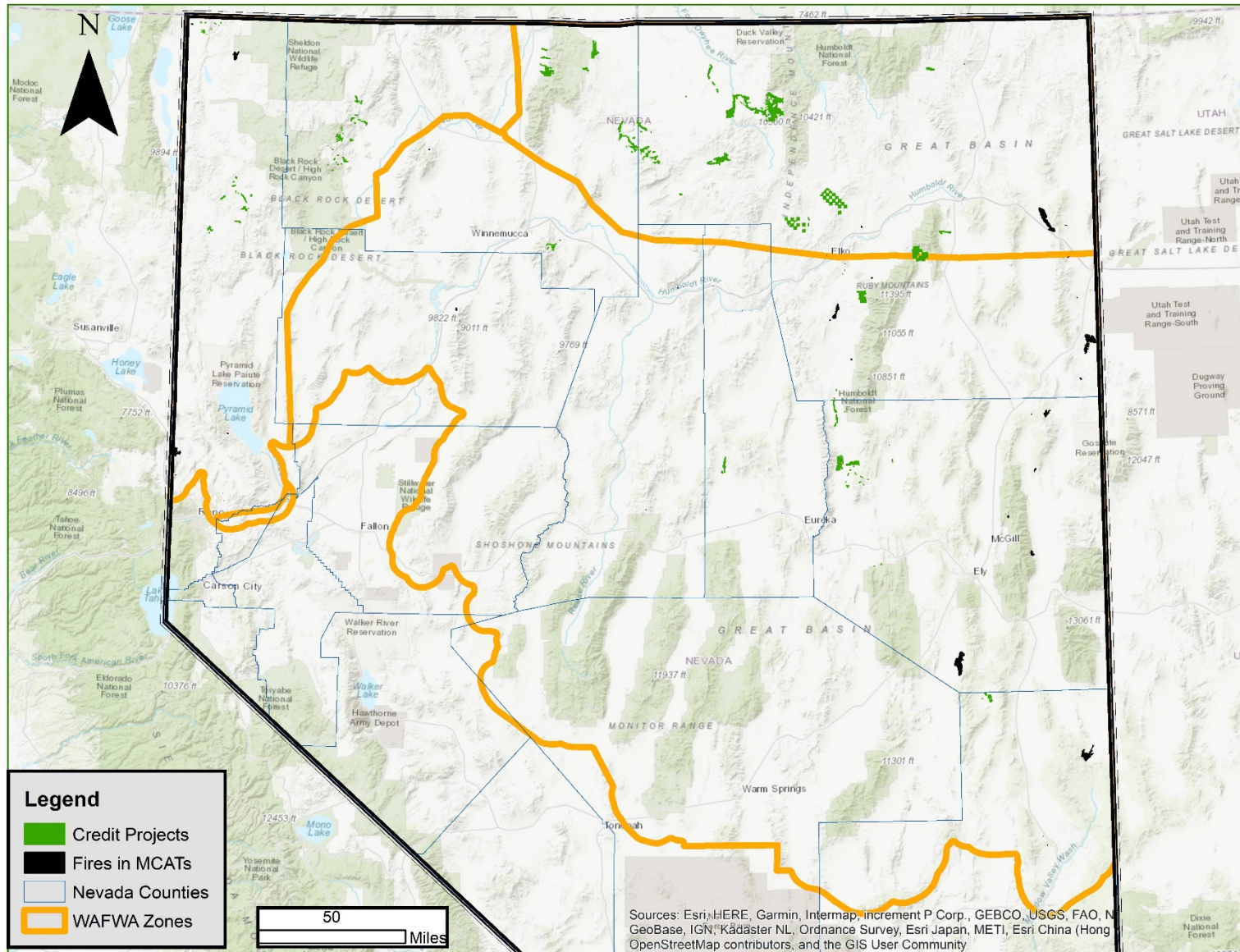
Wildfires in MCATs



MCAT	Acres Burned	Percentage
PHMA	2,263	0.02%
GHMA	21,805	0.27%
OHMA	14,120	0.23%
TOTAL	38,188	0.15%

Fires >1,000 acres	MCAT Acres Burned
Brown	8,035
Ibapah	6,649
Lost	5,995
Miller	4,519
North	4,111
Cedar	2,356
S-4 Sheldon	1,756
Shafter	1,384
Baldy	1,327
TOTAL	36,132 ⁵

Wildfires in MCATs & Credit Projects



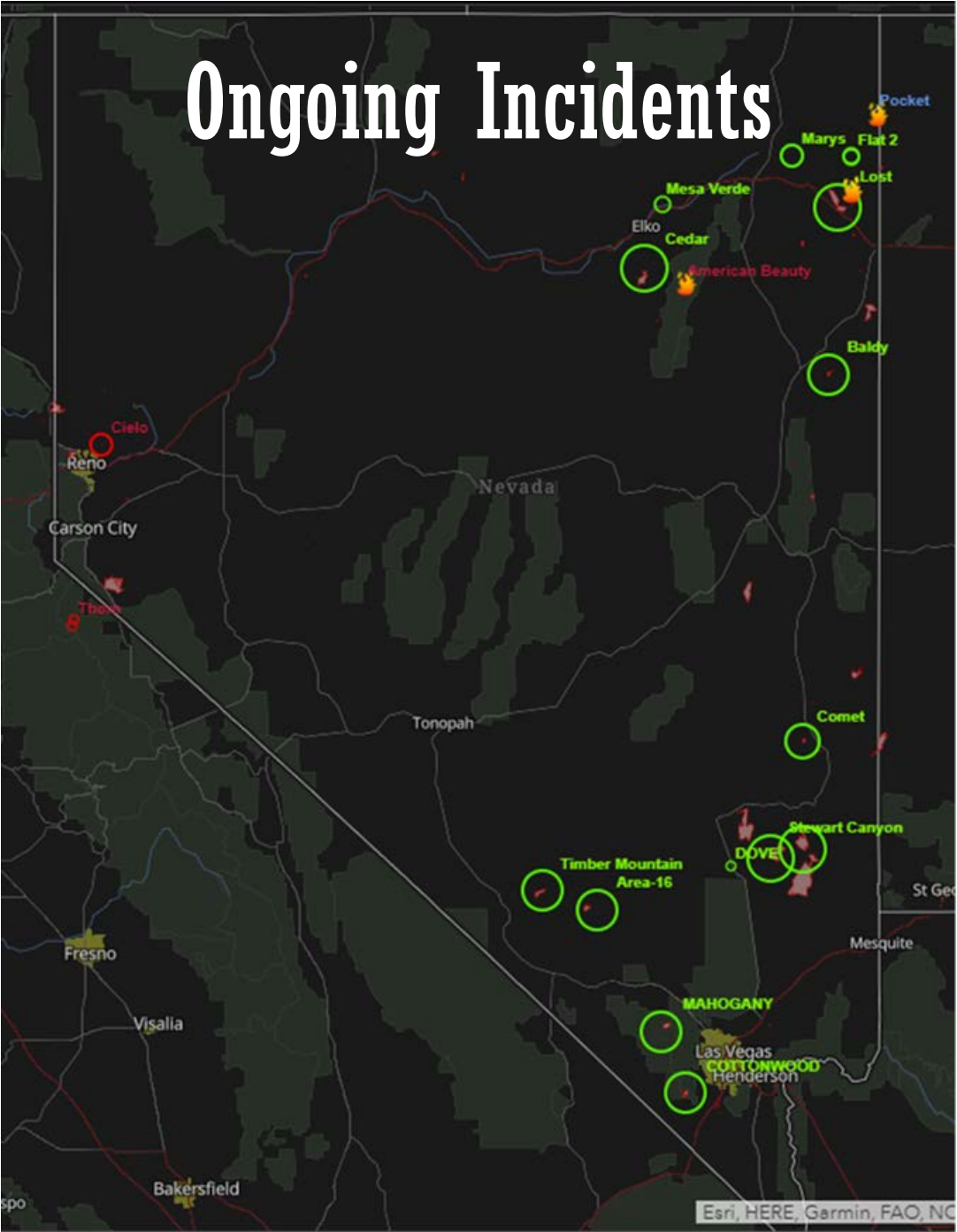
Spatial data indicates
all projects unaffected
so far this season...

INITIAL last 24hrs ATTACK		4 fire(s)	0 acre(s)
ongoing		contained	controlled
1		0	3
LARGE INCIDENTS		0 fire(s)	no activity
type 1	type 2	type 3	type 3 I.C.
0	0	0	0
ONGOING INCIDENTS		4 fire(s)	75 acre(s)

select/deselect incident to zoom in/out
sorted by size

- ☒ **Cielo** - 75 acre(s)
Washoe County
- ☐ **Davis** - 0.1 acre(s)
Alpine County
- ☐ **Thorn** - 0.1 acre(s)
Alpine County
- ☐ **American Beauty** - 0.1 acre(s)
Elko County

Last update: 3 minutes ago



MAP LEGEND

New Starts (last 24hrs)

Current Large Incidents

- INT 1 Type 1 Team
- INT 2 Type 2 Team
- INT 3 Type 3 Team
- TSIC Type 3 IC

Ongoing

Acres

- 5,000+
- 1,000 to 4,999.9
- 300 to 999.9
- 100 to 299.9
- 10 to 99.9
- 0.26 to 9.9
- 0.1 to 0.25

MAP ACTIVITY

4 ongoing fire(s)

15 contained fire(s)

3 controlled fire(s)

7 Day Outlook



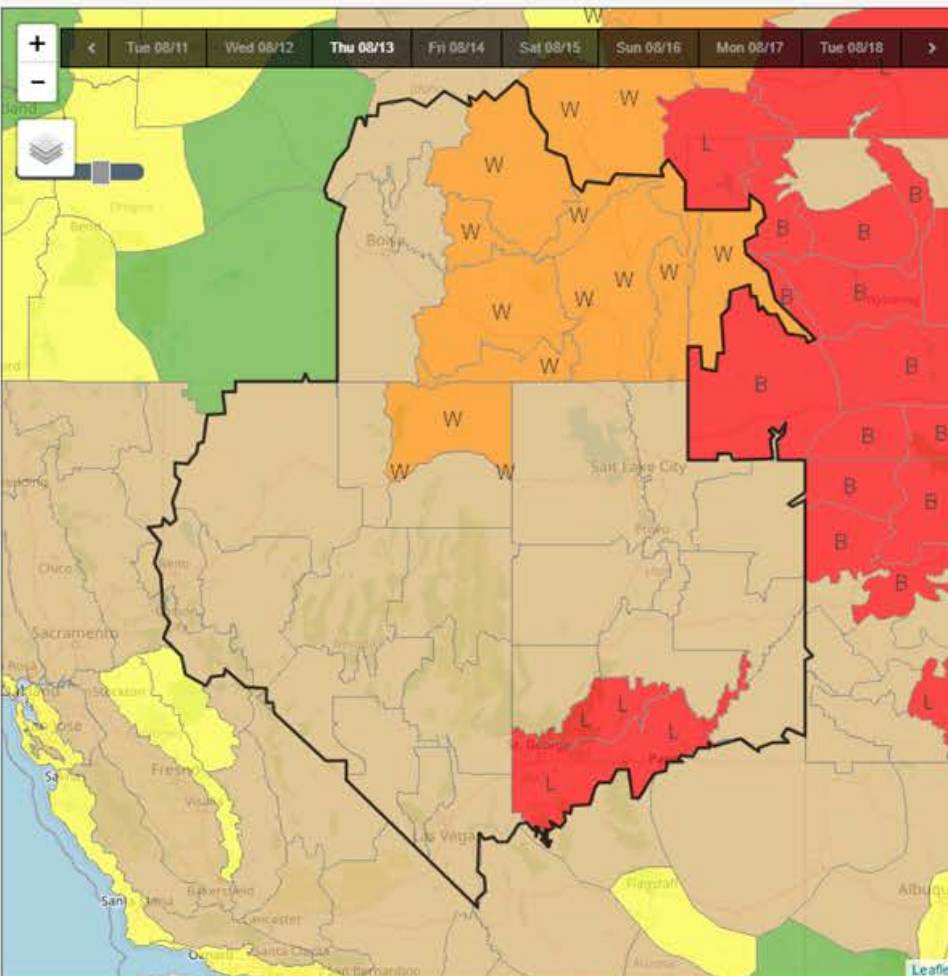
NATIONAL 7-DAY SIGNIFICANT FIRE POTENTIAL

[Login](#)[Home](#) [Forecast Shapefiles](#) [Forecast Static Maps](#) [Map Services](#)

Geographic Area

National

[Alaska](#)
[California North Ops](#)
[California South Ops](#)
[Eastern Area](#)
[Great Basin](#)
[Northern Rockies](#)
[Northwest](#)
[Rocky Mountain](#)
[Southern Area](#)
[Southwest](#)

[Map](#) [Side-by-Side](#)[Forecast](#) [Export](#)Parameters: [Prepare Print](#)

Published: Aug 12, 2020 7:20:00 AM MT

Predictive Service Area (PSA)	Tue 11 Aug	Wed 12 Aug	Thu 13 Aug	Fri 14 Aug	Sat 15 Aug	Sun 16 Aug	Mon 17 Aug	Tue 18 Aug
GB01 - Payette								
GB02 - Central Idaho			W					
GB03 - SW Idaho		W						
GB04 - Boise Mtns								
GB05 - Northern Sawtooth			W					
GB06 - Magic Valley		W	W					
GB07 - Southern Sawtooth		W	W					
GB08 - Upper Snake River		L	W					
GB09 - Eastern Idaho Highlands		L	W					
GB10 - Western Wyoming		L	W					
GB11 - Southern Sierra Front								
GB12 - Northern Sierra Front		W						
GB13 - Lahontan Basin		W						
GB14 - NW Nevada		W						
GB15 - Central NV Mountains								
GB16 - Central NV Desert								
GB17 - West Elko		W						
GB18 - Jarbidge		W	W					
GB19 - Ruby		W						
GB20 - Ely North		W						
GB21 - Ely South		W						

Legend

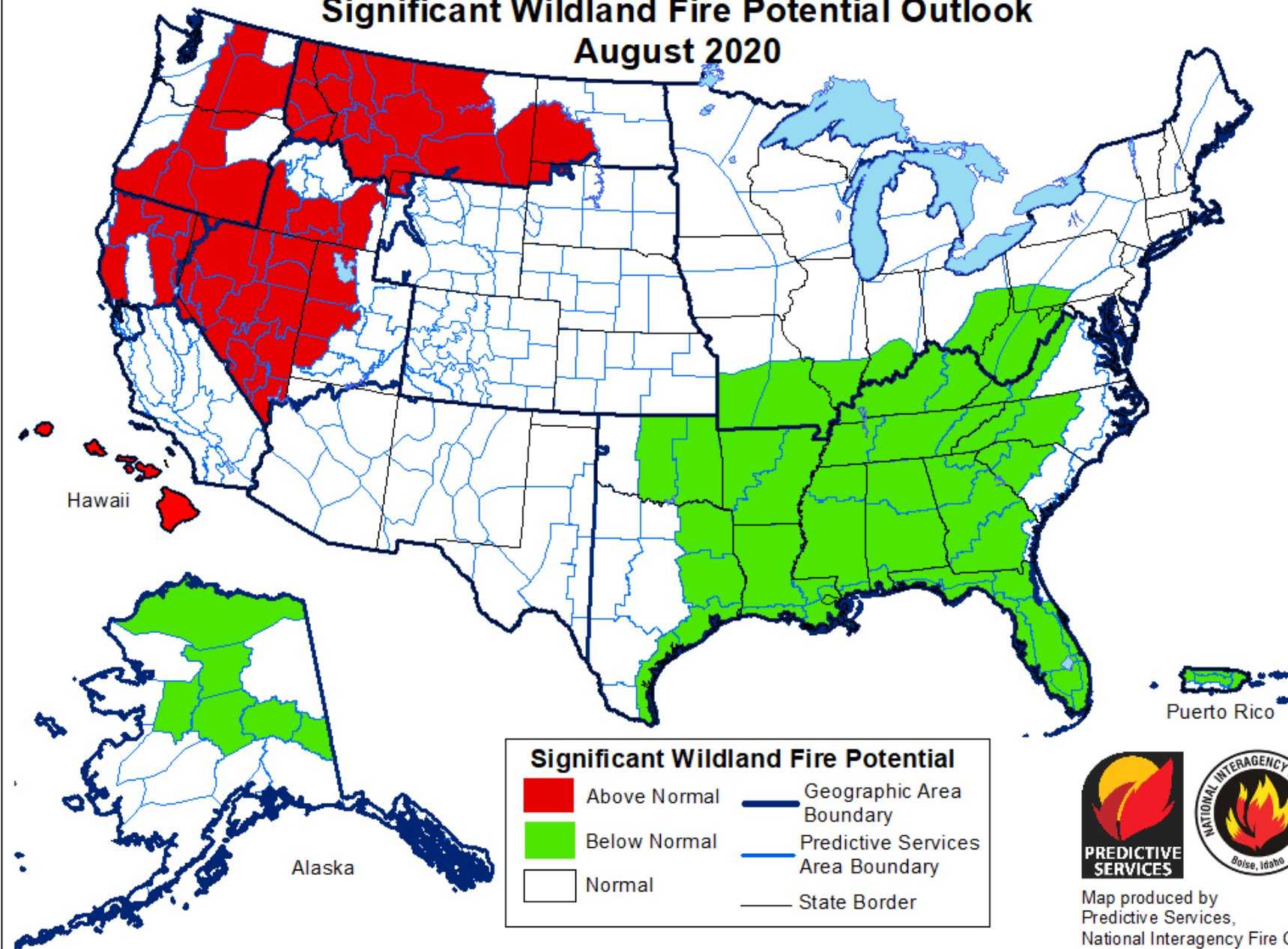
Significant Fire Potential

- No Data
- Little or no risk.
- Low risk
- Moderate risk

High Risk Triggers

- H
- U
- W
- L

Significant Wildland Fire Potential Outlook August 2020

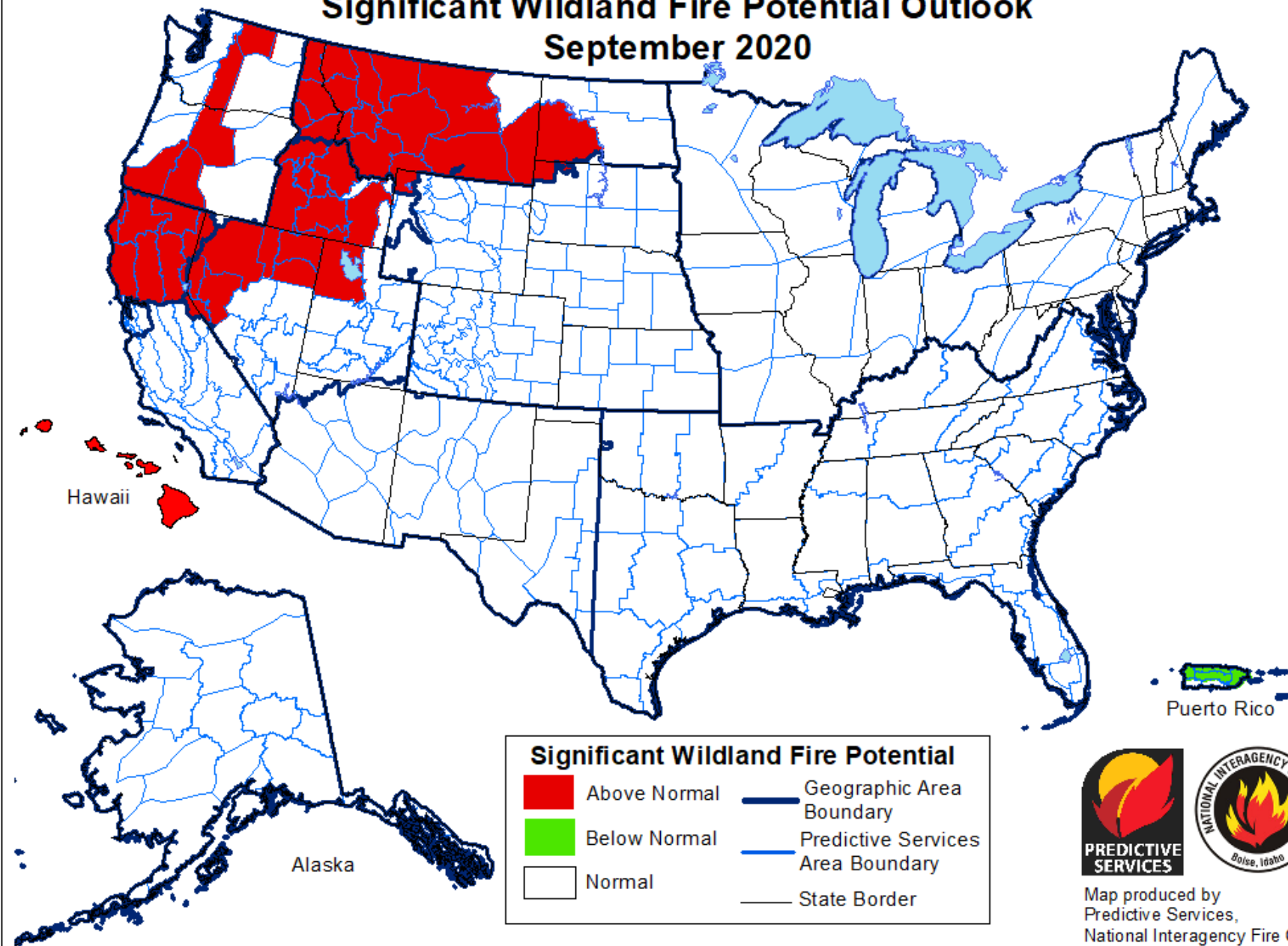


Above normal significant wildland fire potential indicates a greater than usual likelihood that significant wildland fires will occur. Significant wildland fires should be expected at typical times and intervals during normal significant wildland fire potential conditions. Significant wildland fires are still possible but less likely than usual during forecasted below normal periods.



Map produced by
Predictive Services,
National Interagency Fire Center
Boise, Idaho
Issued August 1, 2020
Next issuance September 1, 2020

Significant Wildland Fire Potential Outlook September 2020



Above normal significant wildland fire potential indicates a greater than usual likelihood that significant wildland fires will occur. Significant wildland fires should be expected at typical times and intervals during normal significant wildland fire potential conditions. Significant wildland fires are still possible but less likely than usual during forecasted below normal periods.

Map produced by
Predictive Services,
National Interagency Fire Center
Boise, Idaho
Issued August 1, 2020
Next issuance September 1, 2020

Significant Wildland Fire Potential Outlook October 2020

Significant Wildland Fire Potential

- Above Normal
- Below Normal
- Normal

Geographic Area Boundary

Predictive Services Area Boundary

State Border

Hawaii

Alaska

Puerto Rico

PREDICTIVE SERVICES

NATIONAL INTERAGENCY FIRE CENTER
Boise, Idaho

Map produced by
Predictive Services,
National Interagency Fire Center
Boise, Idaho
Issued July 1, 2020
Next issuance August 1, 2020

Above normal significant wildland fire potential indicates a greater than usual likelihood that significant wildland fires will occur.
Significant wildland fires should be expected at typical times and intervals during normal significant wildland fire potential conditions.
Significant wildland fires are still possible but less likely than usual during forecasted below normal periods.

Above normal significant wildland fire potential indicates a greater than usual likelihood that significant wildland fires will occur. Significant wildland fires should be expected at typical times and intervals during normal significant wildland fire potential conditions. Significant wildland fires are still possible but less likely than usual during forecasted below normal periods.



**PREDICTIVE
SERVICES**



Map produced by
Predictive Services,
National Interagency Fire Center
Boise, Idaho
Issued July 1, 2020
Next issuance August 1, 2020