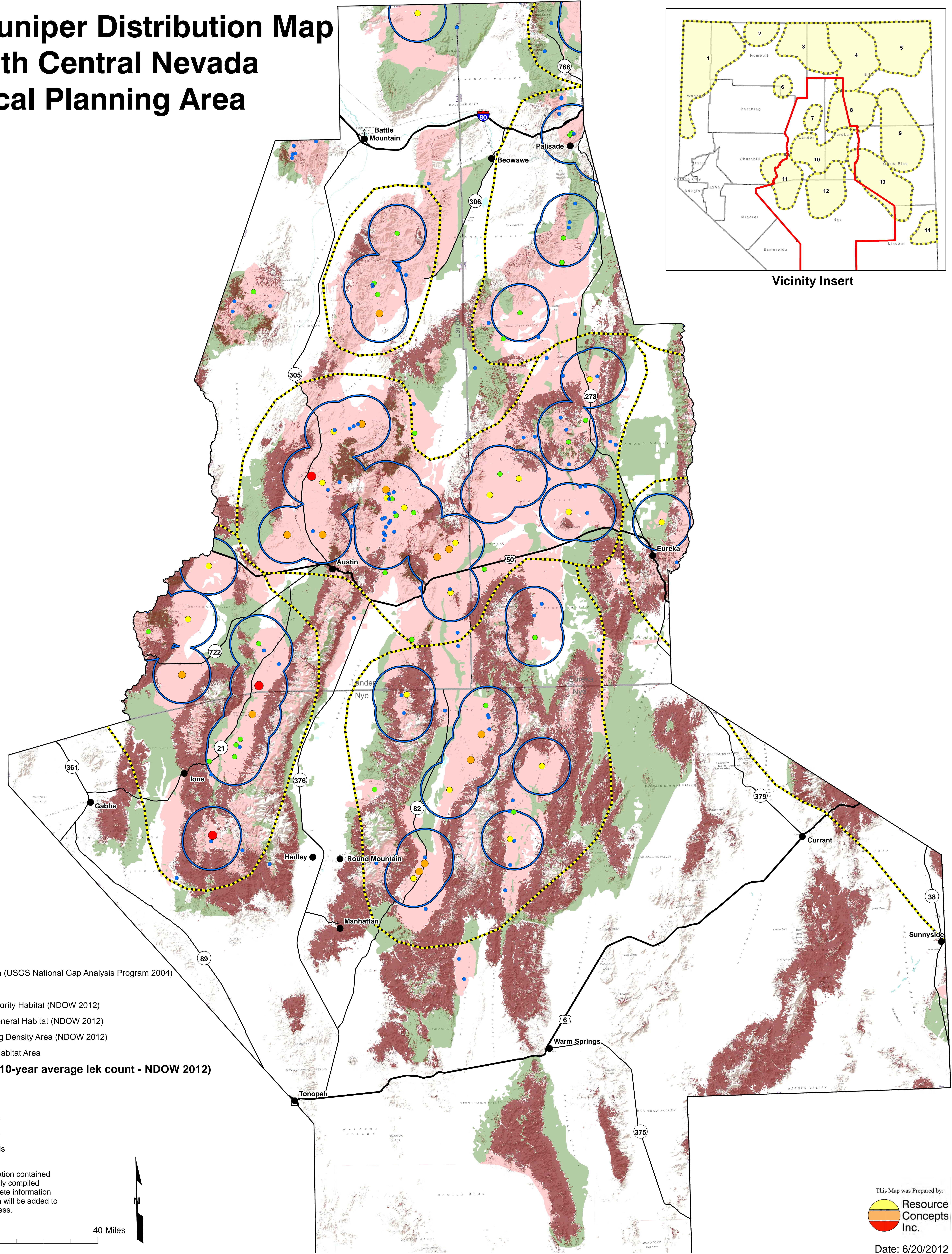
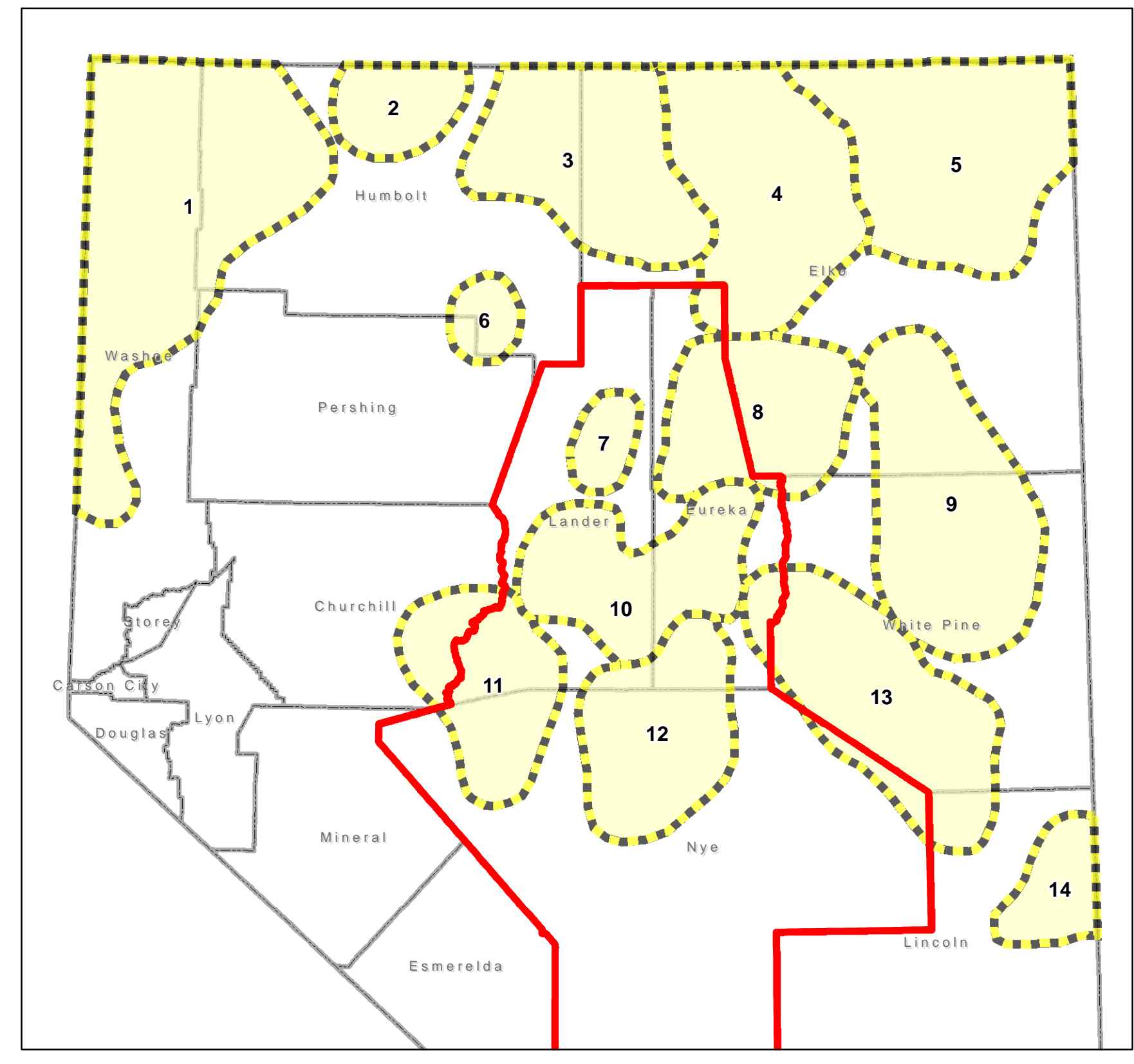


# Pinyon-Juniper Distribution Map

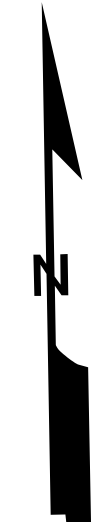
## South Central Nevada

### Local Planning Area



- Legend**
- Pinyon-Juniper Distribution (USGS National Gap Analysis Program 2004)
  - Habitat Categories**
  - BLM/USFS Preliminary Priority Habitat (NDOW 2012)
  - BLM/USFS Preliminary General Habitat (NDOW 2012)
  - 85% Sage-grouse Breeding Density Area (NDOW 2012)
  - Preliminary Sage-grouse Habitat Area
  - Sage-grouse Lek Sites (10-year average lek count - NDOW 2012)**
  - 1-10 Breeding Male Birds
  - 11-20 Breeding Male Birds
  - 21-30 Breeding Male Birds
  - 31-50 Breeding Male Birds
  - 51-100 Breeding Male Birds

Note:  
Land use and development information contained in this mapping is based on currently compiled information. As new or more complete information becomes available, this information will be added to support this iterative planning process.



Path: R:\projects\NDOW\12\_133\_1\MXDs\South\_Central\South\_Central\_PJ.mxd