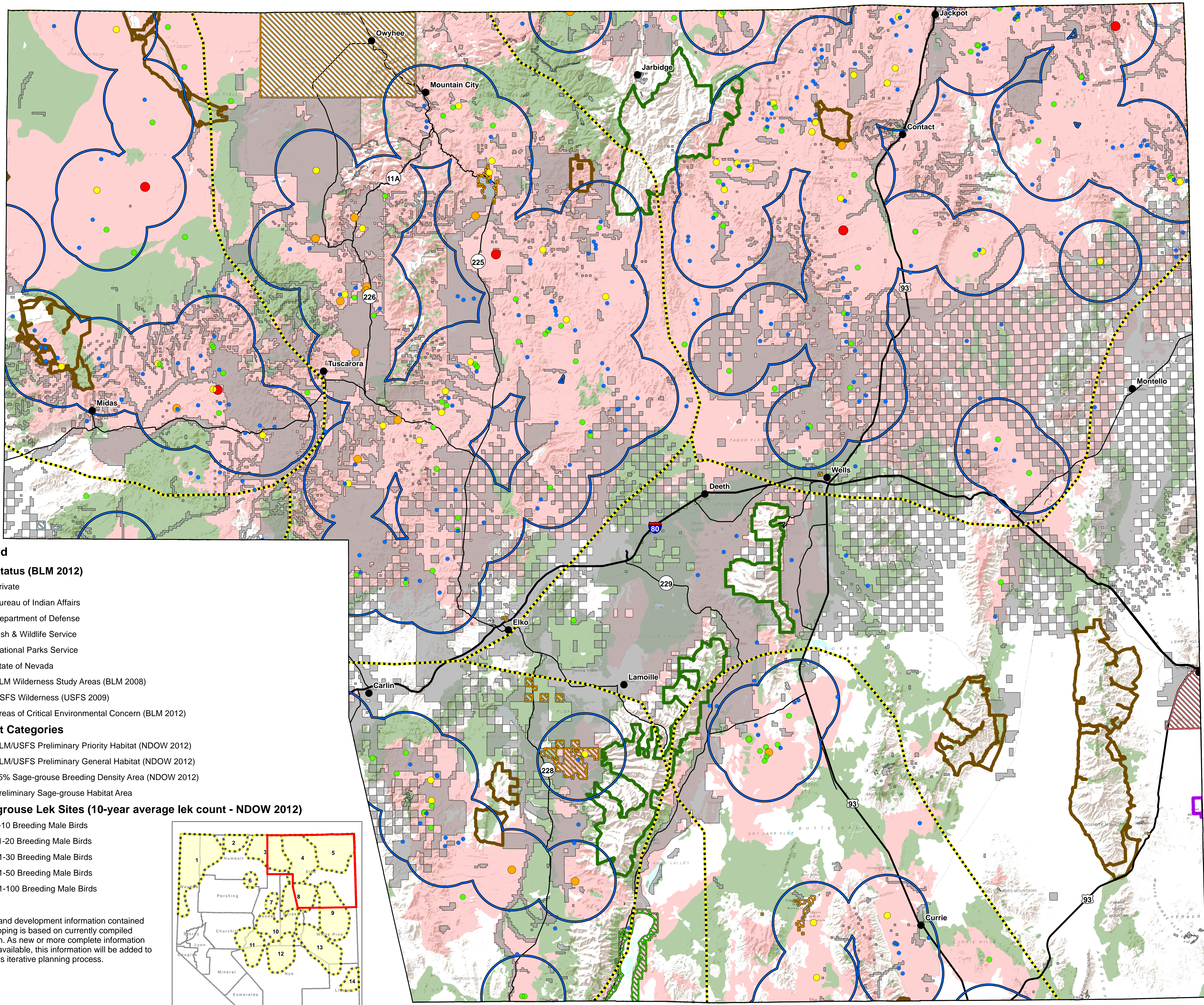


Land Status & Ownership Map

Northeast Nevada Stewardship Local Planning Area



Legend

Land Status (BLM 2012)

- Private
- Bureau of Indian Affairs
- Department of Defense
- Fish & Wildlife Service
- National Parks Service
- State of Nevada
- BLM Wilderness Study Areas (BLM 2008)
- USFS Wilderness (USFS 2009)
- Areas of Critical Environmental Concern (BLM 2012)

Habitat Categories

- BLM/USFS Preliminary Priority Habitat (NDOW 2012)
- BLM/USFS Preliminary General Habitat (NDOW 2012)
- 85% Sage-grouse Breeding Density Area (NDOW 2012)
- Preliminary Sage-grouse Habitat Area

Sage-grouse Lek Sites (10-year average lek count - NDOW 2012)

- 1-10 Breeding Male Birds
- 11-20 Breeding Male Birds
- 21-30 Breeding Male Birds
- 31-50 Breeding Male Birds
- 51-100 Breeding Male Birds

Vicinity Insert

0 10 20 40 Miles

Note:
Land use and development information contained in this mapping is based on currently compiled information. As new or more complete information becomes available, this information will be added to support this iterative planning process.

Path: R:\projects\NDOW12_133_1\MapData\EIko_LAWG\EIko_landstatus.mxd