

Energy Development and Power Transmission Map Lincoln County Local Planning Area

Legend

- ▲ Geothermal Power Plants (NBMG 2012)
- Geothermal Exploration (NBMG 2012)
- Existing Oil & Gas Leases (NBMG 2012)
- BLM Wind Energy Right-of-Ways (Active & Pending - 2012)
- BLM Geothermal Leases (Active & Pending - 2012)
- Wind Zones (NEAC 2012)
- Geothermal Zones (NEAC 2012)
- Solar Zones (NEAC 2012)
- Geothermal Leases 2012 (NBMG 2012)
- Geothermal Leases 2011 (NBMG 2012)
- BLM Oil & Gas Leases (Active & Pending - 2012)
- Existing Transmission Lines (NEAC 2012)
- Proposed Transmission Lines (NEAC 2012)

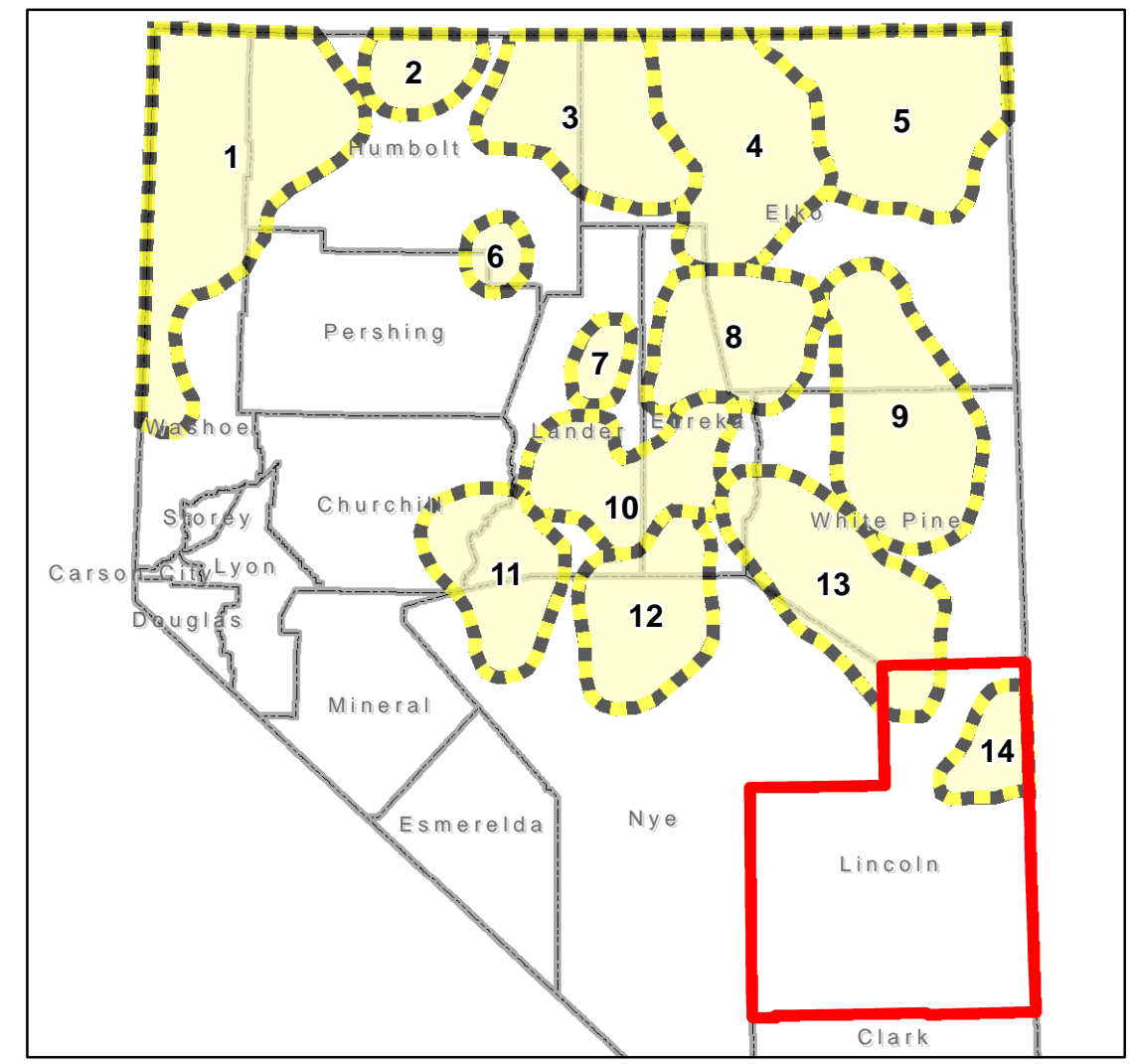
Habitat Categories

- BLM/USFS Preliminary Priority Habitat (NDOW 2012)
- BLM/USFS Preliminary General Habitat (NDOW 2012)
- 85% Sage-grouse Breeding Density Area (NDOW 2012)
- Preliminary Sage-grouse Habitat Area

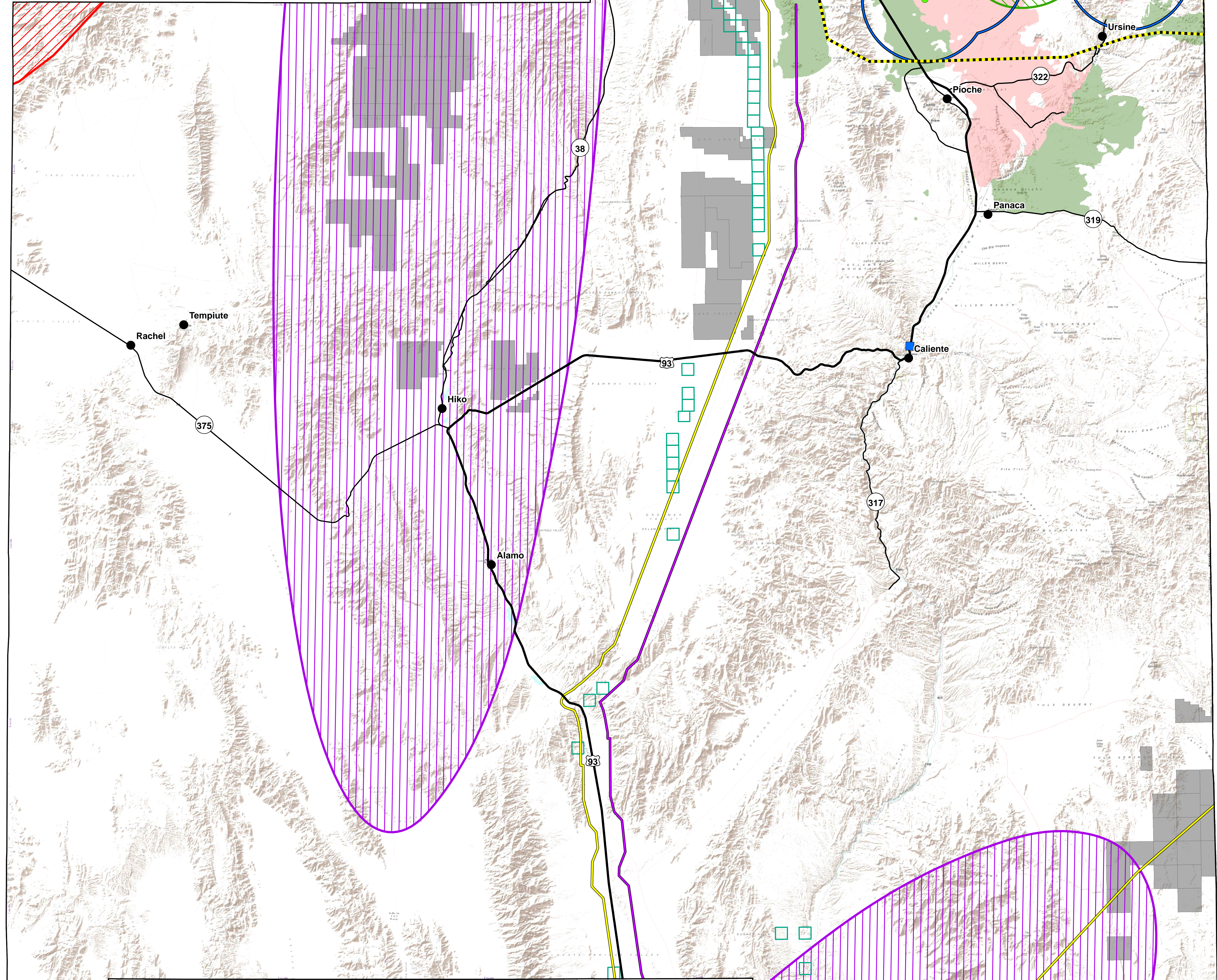
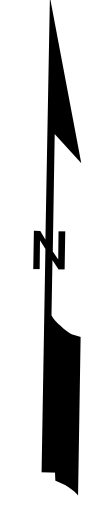
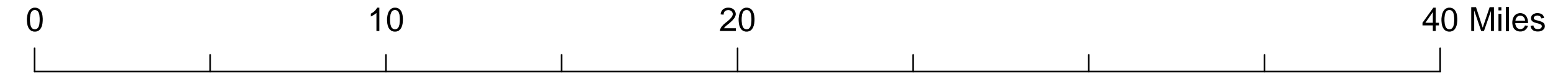
Sage-grouse Lek Sites (10-year average lek count - NDOW 2012)

- 1-10 Breeding Male Birds
- 11-20 Breeding Male Birds
- 21-30 Breeding Male Birds
- 31-50 Breeding Male Birds
- 51-100 Breeding Male Birds

Note:
Land use and development information contained in this mapping is based on currently compiled information. As new or more complete information becomes available, this information will be added to support this iterative planning process.



Vicinity Insert



This Map was Prepared by:
Resource Concepts Inc.

Date: 6/15/2012