



Bi-State Sage-Grouse Local Area Working Group

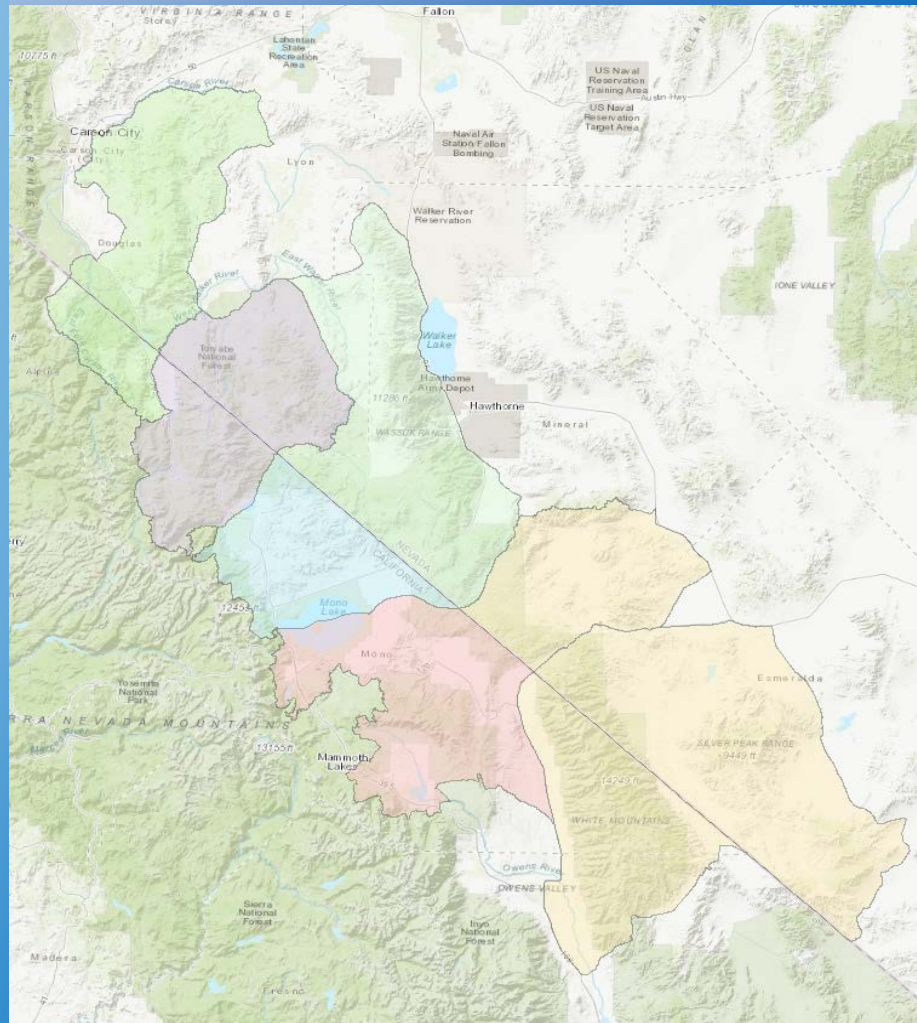
Objectives:

The Bi-State LAWG provides an open forum for coordinating a landscape level approach to Bi-State sage-grouse conservation and management. Participants include federal, state, and local governments; Native American tribes; non-profit organizations; ranchers, and landowners.

Goals:

Each year, Bi-State partners work together to leverage expertise and develop conservation strategies. LAWG members work across jurisdictional boundaries to monitor population demographics, complete habitat assessments, and carry projects laid out in the 2012 Bi-State Sage-Grouse Conservation Action Plan.

Bi-State Area: California/Nevada Border



Contact:

Amy Sturgill, Bi-State
Sage-Grouse Coordinator

bistatesagegrouse@gmail.com

Website: www.bistatesagegrouse.com

Significant Achievements

A collaborative approach for conservation of the Bi-State greater sage-grouse was initiated in 2002 by the Bi-State Local Area Working Group (LAWG).

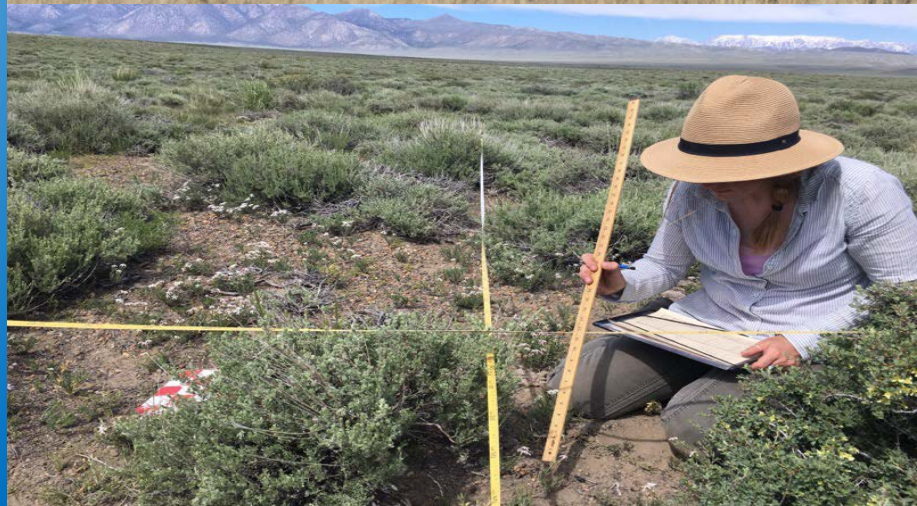
Since then, stakeholders have implemented actions for long-term conservation of greater sage-grouse in the Bi-State area, guided by the [2012 Bi-State Sage-Grouse Conservation Action Plan](#).

Accomplishments include:

- Population monitoring
- Annual lek counts
- Habitat and assessments
- Addressing threats
- Implementing conservation projects

Completed actions have prevented the listing of Bi-State sage-grouse under the Endangered Species Act.

[View a conservation history timeline here.](#)





Activities To Date



Accomplishment Highlights

- A “sage-grouse service team” approach was implemented
- Formation of an executive oversight committee, technical advisory committee, and a Tribal natural resource committee
- \$45M multi-jurisdictional funding support provided to conserve sage-grouse and their habitats
- Development of a spatially explicit conservation planning tool and an integrated population model
- 150k acres of work to benefit sage-grouse populations and sagebrush ecosystems

[View Bi-State Annual Accomplishment Reports](#)

Future Goals



Goals and objectives for Future Actions:

- Grow the Bi-State collaborative—deepen relationships amongst partners and bring in new stakeholders
- Evaluate and update the 2012 Bi-State Conservation Action Plan
- Prioritize new projects to develop an ongoing plan of work
- Utilize up-to-date scientific tools and a science- based adaptive management approach to inform conservation and management decisions
- Monitor ecological outcomes of conservation efforts to demonstrate effectiveness of projects and actions

Resource Needs

- Consistent funding for population monitoring, development of scientific tools, and sage-grouse related research
- Funding to increase implementation of on-the-ground conservation actions
- Funding to support the Bi-State Sage-Grouse Coordinator position beyond 2023
- Technical assistance and support to develop strategies to address loss of mesic resources and the invasive annual grasses
- Continued engagement and participation from LAWG, TAC, EOC, and BTNRC members

