

Eureka CD Portion Of South Central LAWG

Objectives:

Eureka CD (ECD) participates primarily in the South Central LAWG. Much of ECD's focus the last few years has been sage grouse conservation.

The principal goal of the ECD is to conserve natural resources – soil, water and related resources – for current and future wise-use and enjoyment. Conservation assistance is made available to district landowners and operators through coordination of agreements and pursuit of partnerships and project funding federal agencies, state agencies, local agencies such as the Eureka County Natural Resources Department, and many private entities such as the mining industry and wildlife groups.

Upcoming Events:

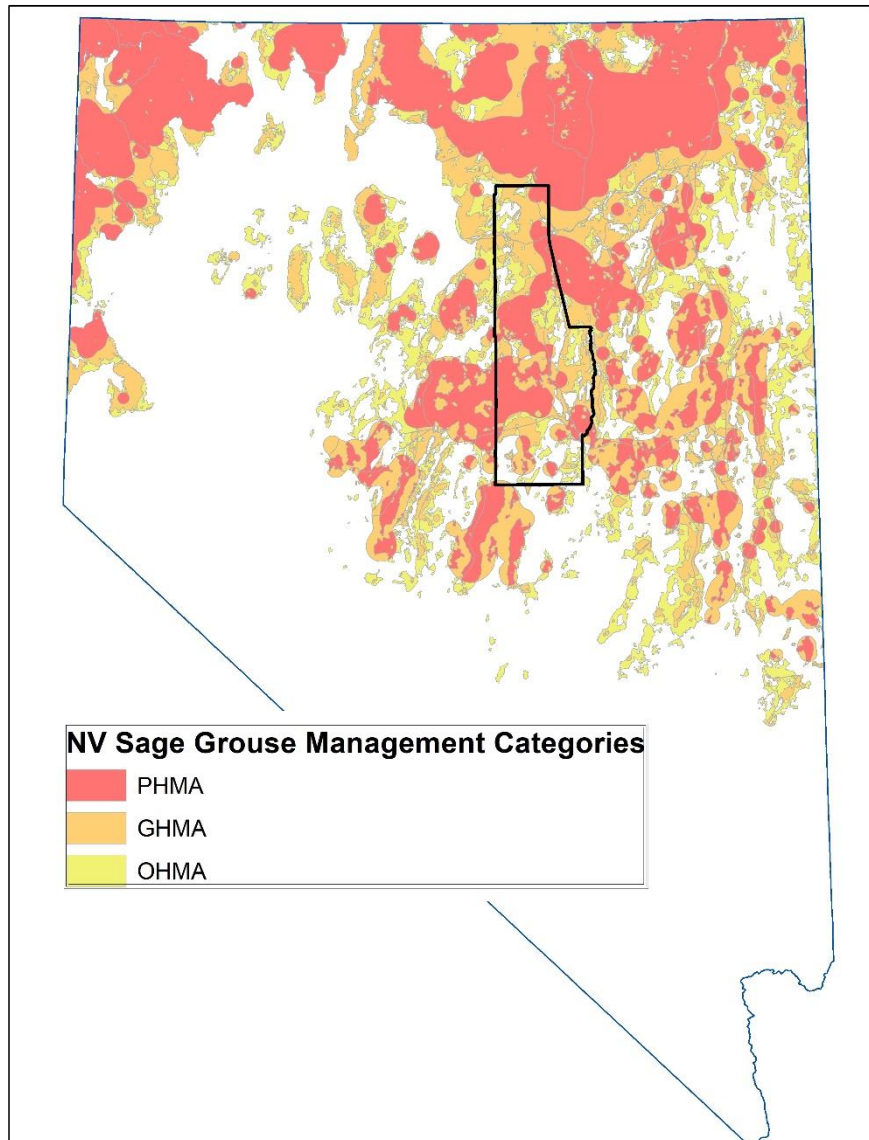
ECD strives to meet monthly. Virtual options are available. Please contact us if interested in participating or having an agenda item.

Jake Tibbitts

jtibbitts@eurekacountynv.gov

775-237-6010

Service Area: All of Eureka County



Significant Achievements

- January 2020; ECD, through Supervisor Jake Tibbitts, facilitated and participated in the South Central Adaptive Management Response Team. Over 30 stakeholders attended with many representing interests within ECDs boundaries. The Team determined, to the best of their expertise, potential causal factors and recommended adaptive management responses.

- Continued sage grouse habitat improvement through PJ removal. Post-June 2020, about 2,000 acres were maintained and/or cleared in priority sage grouse areas. Since 2013, 5,231 acres of encroaching PJ have been cut and over 2,400 acres revisited for maintenance removal of small trees returning to the areas.



Significant Achievements

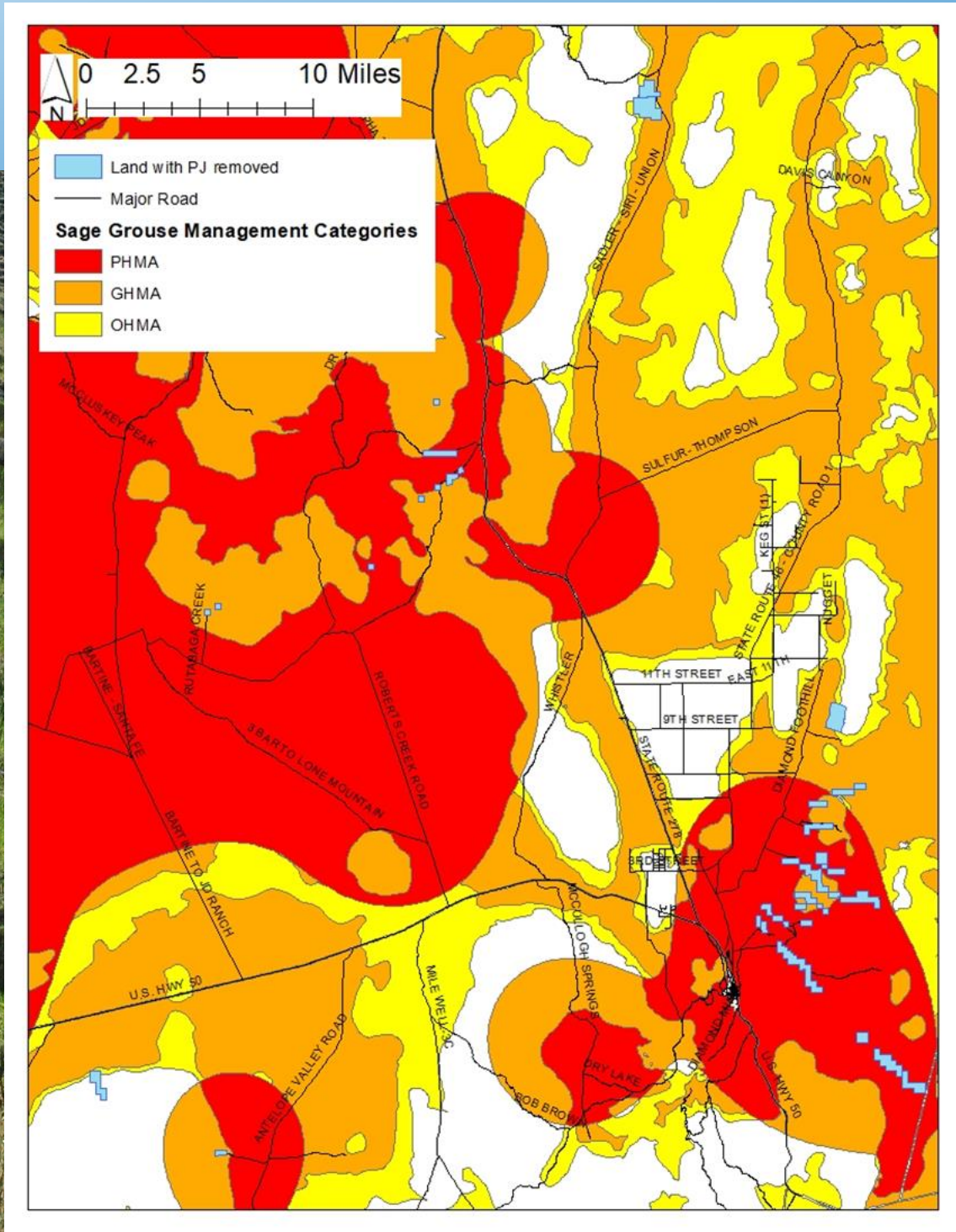
- 2020 Weed Control; ECD has directed the work completed under the Weed District and continued partnerships with landowners to control noxious weeds. Many thousands of dollars and hundreds of hours were devoted to weed control since ECD took the helm over the Weed District; mostly through contract spraying, herbicide distribution to landowners, and provided technical assistance. Recently, they entered into a new multi-year agreement with Battle Mountain BLM and a new agreement with Elko BLM. The bulk of the weed control activities takes place in an benefiting sage grouse habitat.

- ECD continues to move forward with a Conservation Action Plan (CAP) to address the Resource Needs Assessments (RNA) resource needs identified which nearly all have a link to sage grouse conservation.



PJ Removal

Map of areas where PJ removed. About 2000 of these acres were revisited and treated for returning small trees.



PJ Removal

Select before and after photos.



PJ Removal

Select before and after photos.



PJ Removal

Select before and after photos.



Future Goals

Goals and objectives for Future Actions:

- Complete post-RNA Conservation Action Plan to ensure the right projects get on the ground in the right places with the right partners.
 - Complete by June 2021
- Assist in getting all AMRT recommendations within Eureka County implemented or on track to completion by the end of 2021.
 - There are shovel-ready areas and some near shovel-ready within the ECD boundaries (e.g., 3-Bars Project, FRRR PEIS)

Resource Needs

1. Additional funding and capacity to CDs specifically to complete sage grouse-related projects.
 - ✓ Every \$1 invested through CDs returns over \$30 to improve and conserve Nevada's resources.
 - ✓ Synergize efforts through CDs rather than having so many entities competing on funding and duplicating efforts.
2. Need a full time coordinator helping to “herd cats” in getting AMRT recommendations implemented.
3. USGS must be urged and provided the capacity to make the Adaptive Management process streamlined, timely, and effective.
 - ECD and the South Central LAWG had some frustration with working on triggers that occurred a few years ago knowing other triggers may have been met in recent years, including last year, and we were not addressing these at the same time.